

ANHANG

Verzeichnis der Karten im Anhang:

Die Karten 2-18 zeigen die flächenhafte (interpolierte) Darstellung der Elementkonzentrationen im Untersuchungsgebiet und der weiteren Umgebung (Daten aus Zechmeister et al. 2006b); die Karten 19-36 sind Punktdarstellungen der entsprechenden Werte, für eine vertrauenswürdige Interpolierung lagen zu wenige Daten (Standorte) vor.

Karte 1a: Lage der Probenahmepunkte der auf Schwermetalle und PAHs analysierten Moose

Karte 1b: Besammelte Moosarten an den Probenahmepunkten

Karte 2: Aluminium (Al)

Karte 3: Antimon (Sb)

Karte 4: Arsen (As)

Karte 5: Blei (Pb)

Karte 6: Cadmium (Cd)

Karte 7 : Chrom (Cr)

Karte 8: Kobalt (Co)

Karte 9: Eisen (Fe)

Karte 10: Kupfer (Cu)

Karte 11: Molybdän (Mo)

Karte 12: Nickel (Ni)

Karte 13: Quecksilber (Hg)

Karte 14: Schwefel (S)

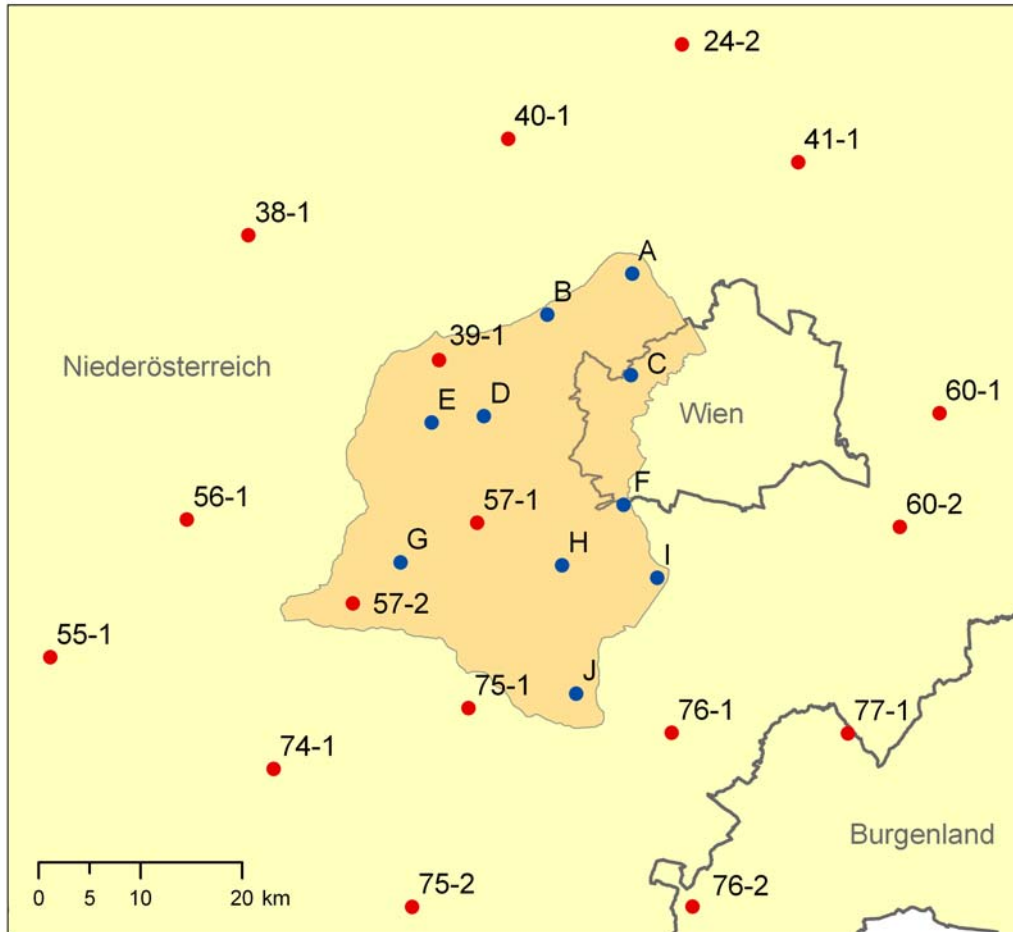
Karte 15: Stickstoff (N)

Karte 16: Vanadium (V)

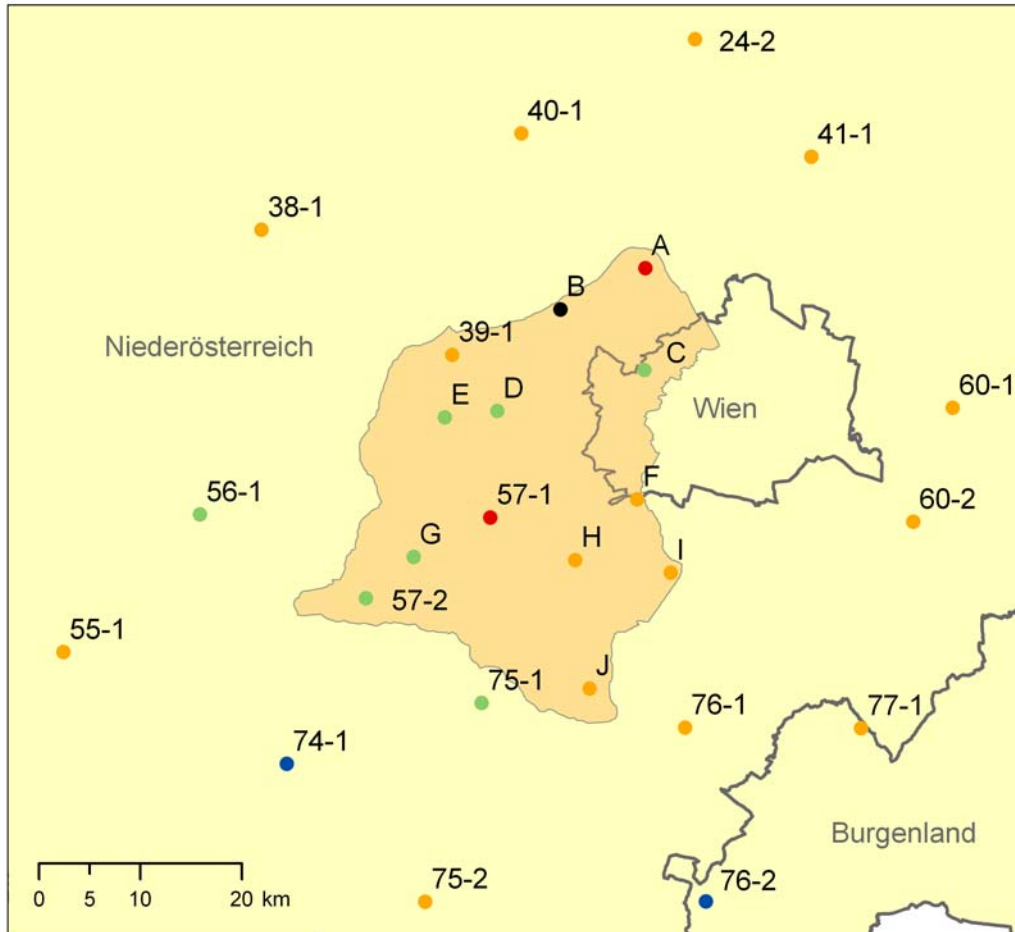
Karte 17: Zink (Zn)

Karte 18: Summe aller untersuchten Elemente der Karten 3-17

Karte 19: Naphtalin
Karte 20: Acenaphthylen
Karte 21: Acenapthen
Karte 22: Flouren
Karte 23: Phenanthren
Karte 24: Anthracen
Karte 25: Flouranthen
Karte 26: Pyren
Karte 27: Benzo(a)anthracen
Karte 28: Chrysen
Karte 29: Benzo(b)flouranthen
Karte 30: Benzo(k)flouranthen
Karte 31: Benz(a)pyren
Karte 32: Indenopyren
Karte 33: Dibenzanthracen
Karte 34: Benzoperylen
Karte 35: Coronen
Karte 36: Summe der EPA-PAHs



- Probenahmepunkt Österreich-Erhebung
- Probenahmepunkt Wienerwald
- Biosphärenpark Wienerwald
- Bundeslandgrenze

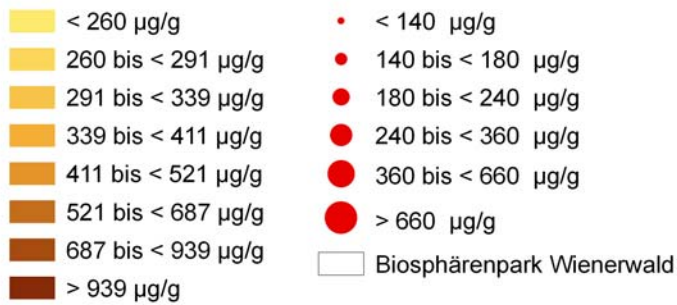
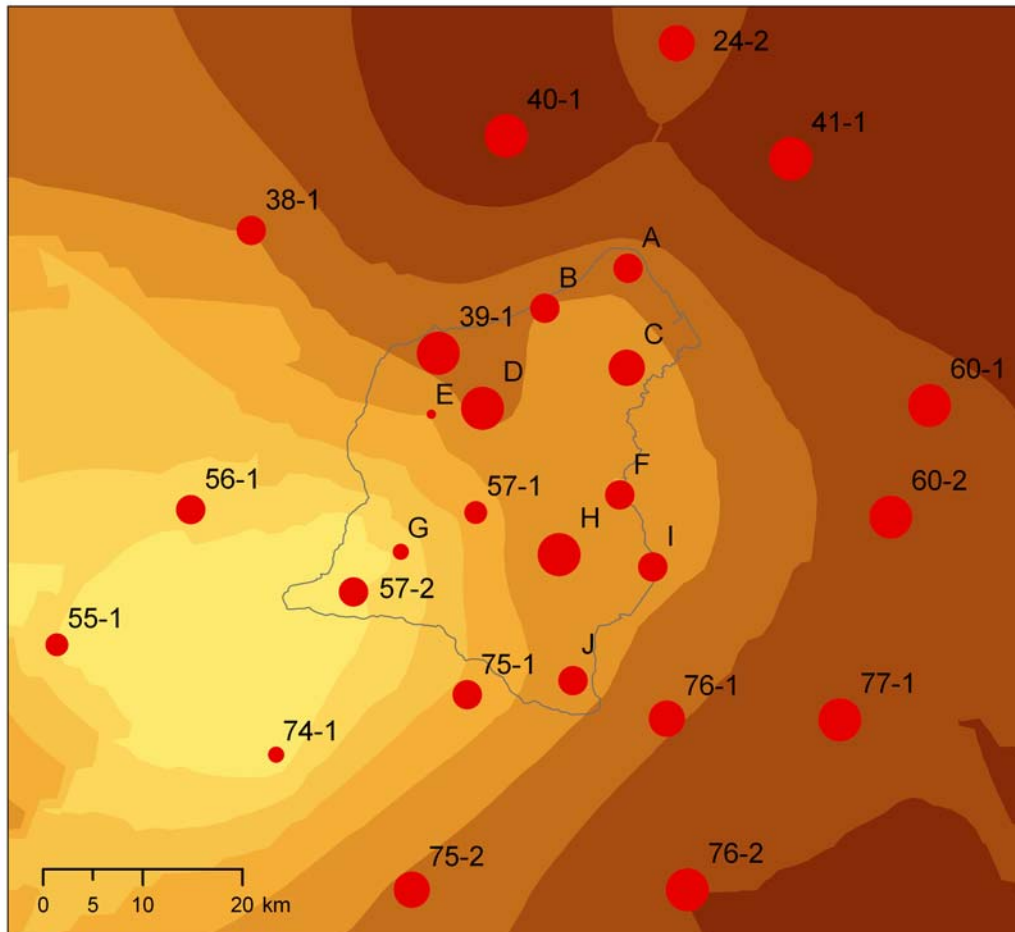


- *Abietinella abietina*
- *Hypnum cupressiforme*
- *Pleurozium schreberi*
- *Scleropodium purum*
- Mischprobe Rhytidium /Scleropod
- Biosphärenpark Wienerwald
- Bundeslandgrenze

umweltbundesamt[®]

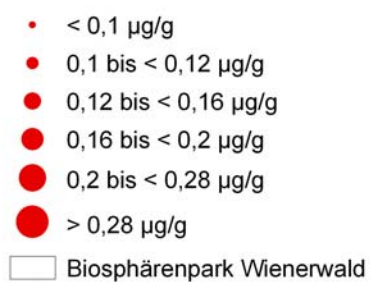
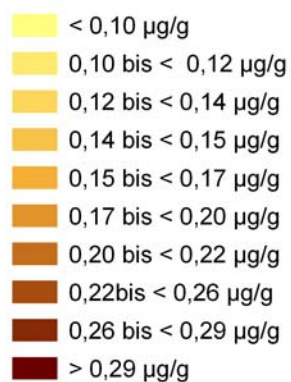
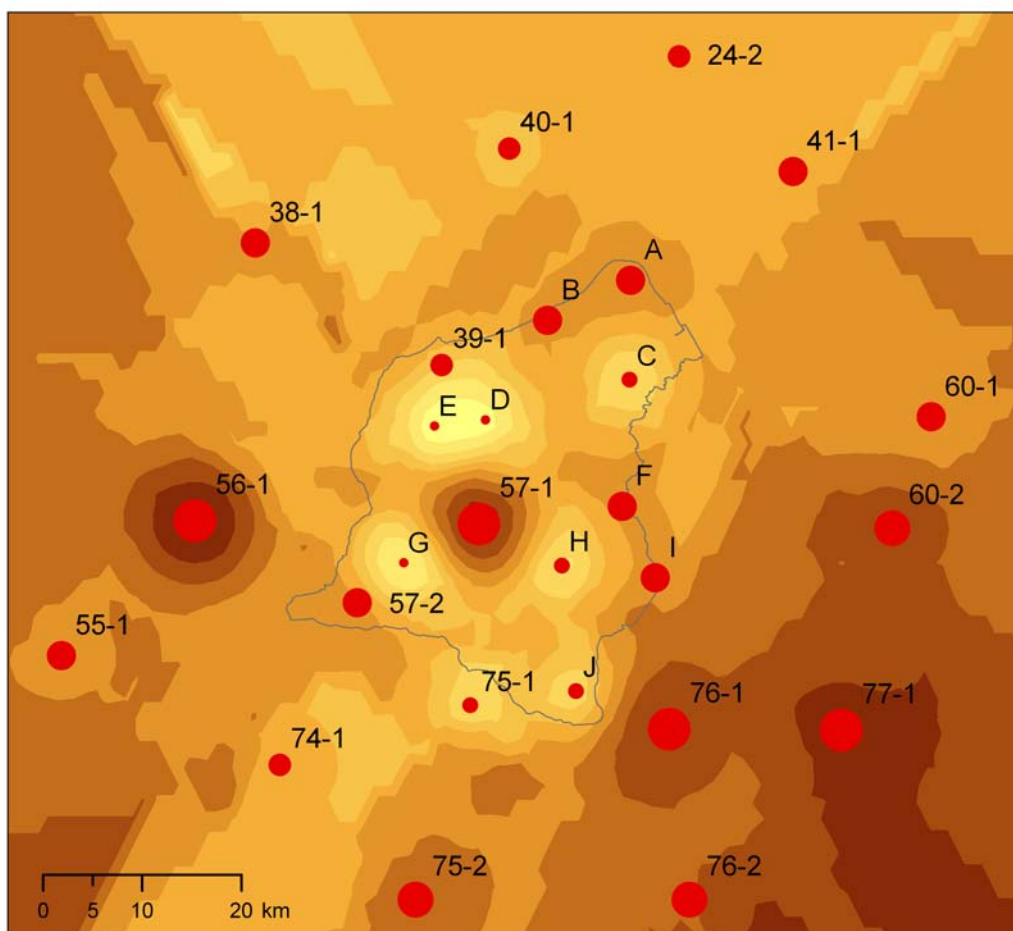
Zechmeister & Zechmeister-Boltenstern OEG
 GIS-Bearbeitung: Ingrid Roder, April 2006

Aluminium in Moosen (Aufsammlung 2005) interpoliert Karte 2



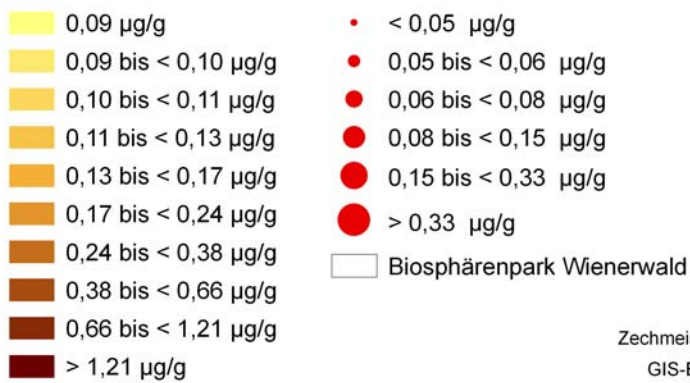
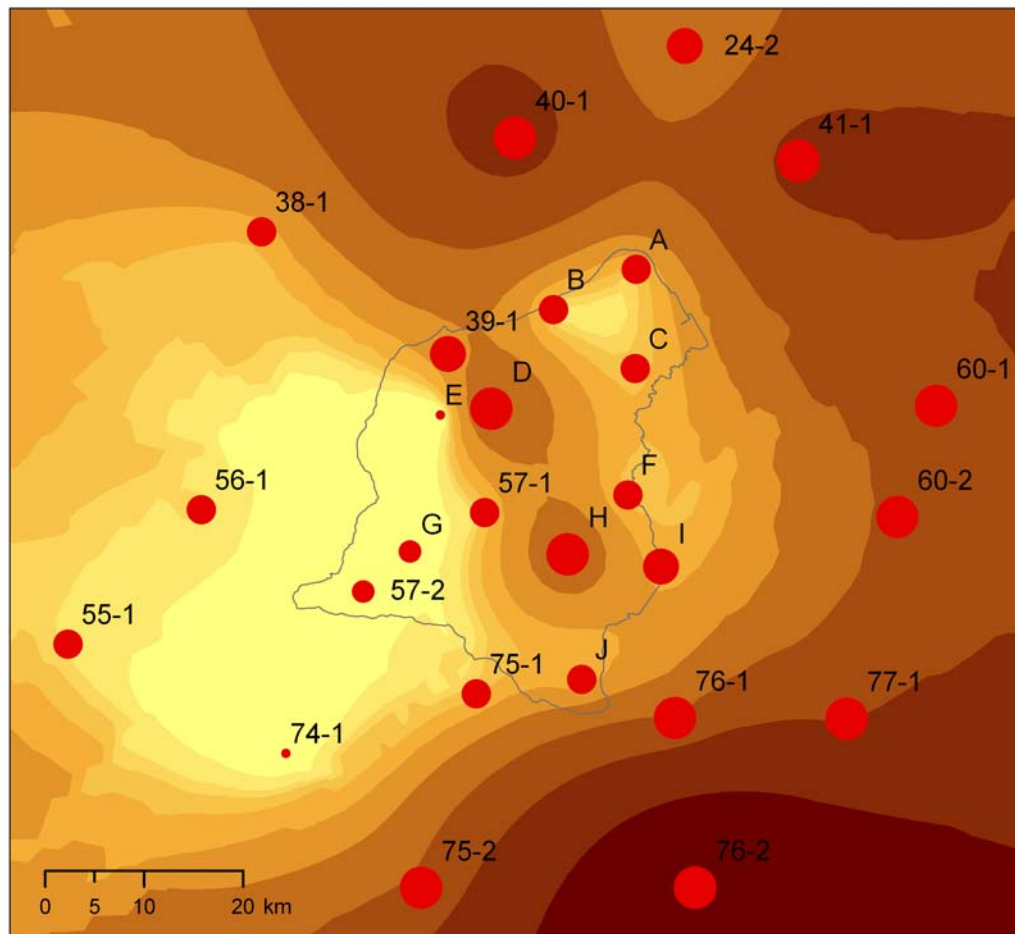
umweltbundesamt[®]

Zechmeister & Zechmeister-Boltenstern OEG
GIS-Bearbeitung: Ingrid Roder, April 2006



umweltbundesamt[®]

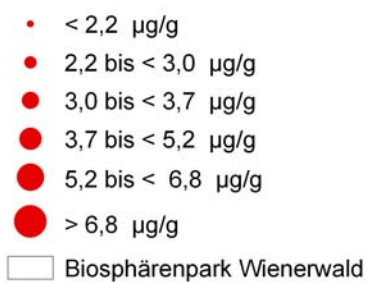
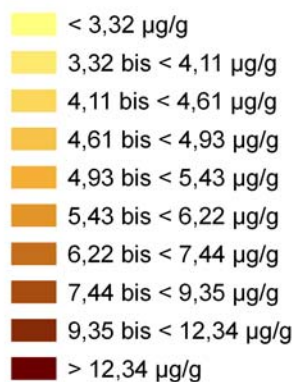
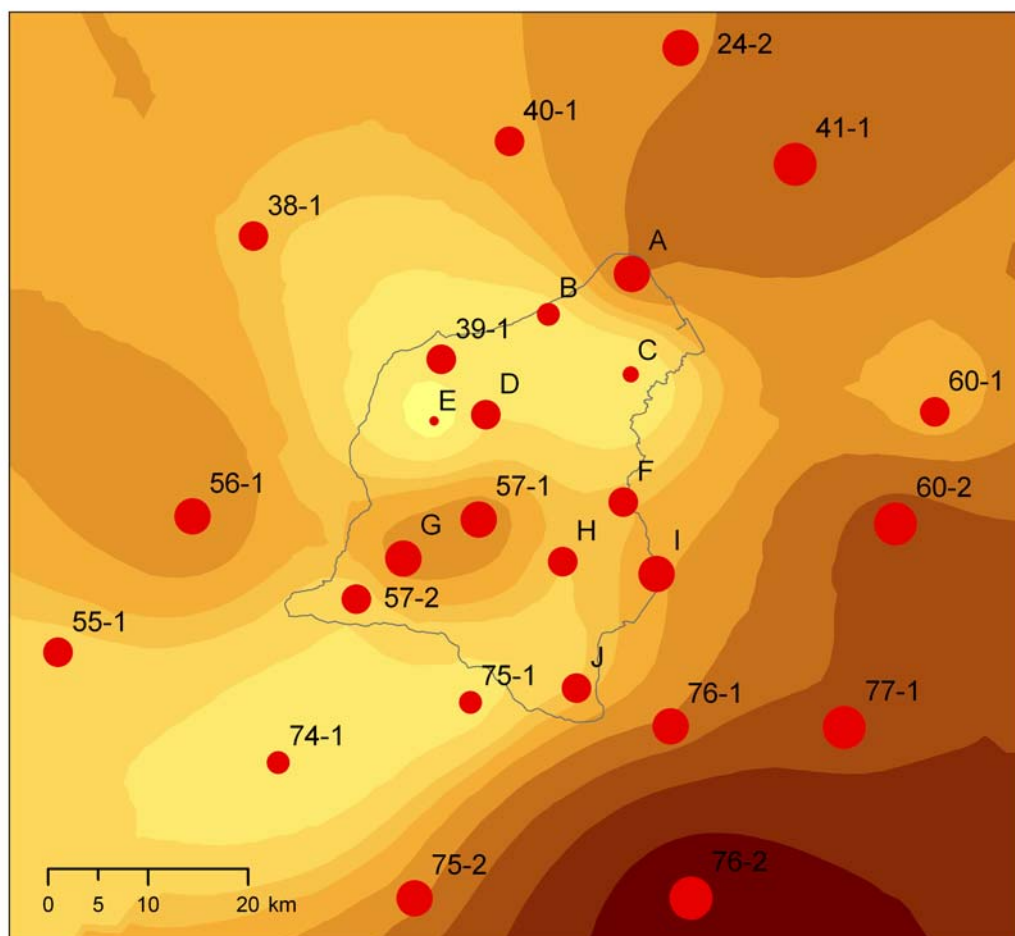
Zechmeister & Zechmeister-Boltenstern OEG
GIS-Bearbeitung: Ingrid Roder, April 2006



umweltbundesamt[®]

Zechmeister & Zechmeister-Boltenstern OEG

GIS-Bearbeitung: Ingrid Roder, April 2006



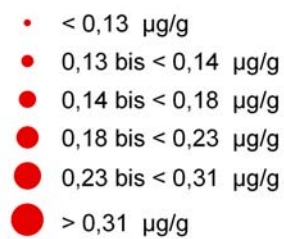
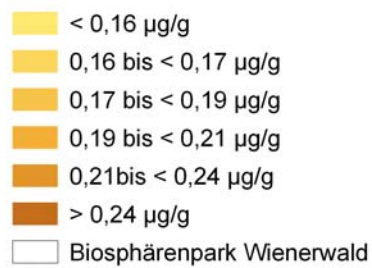
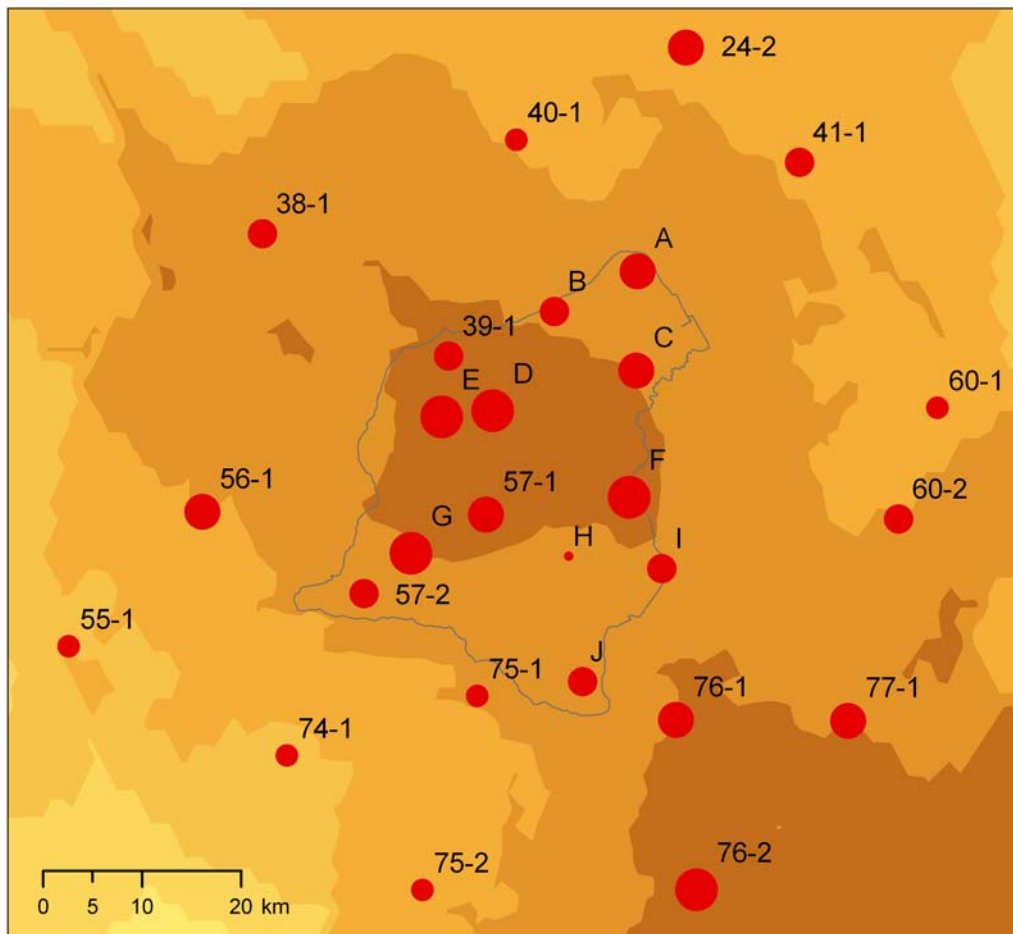
umweltbundesamt[®]

Zechmeister & Zechmeister-Boltenstern OEG

GIS-Bearbeitung: Ingrid Roder, April 2006

Cadmium in Moosen (Aufsammlung 2005) interpoliert

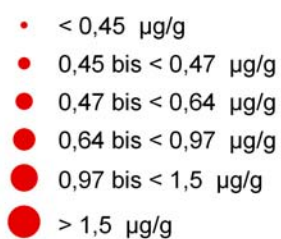
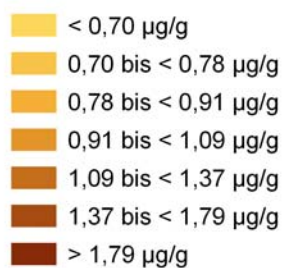
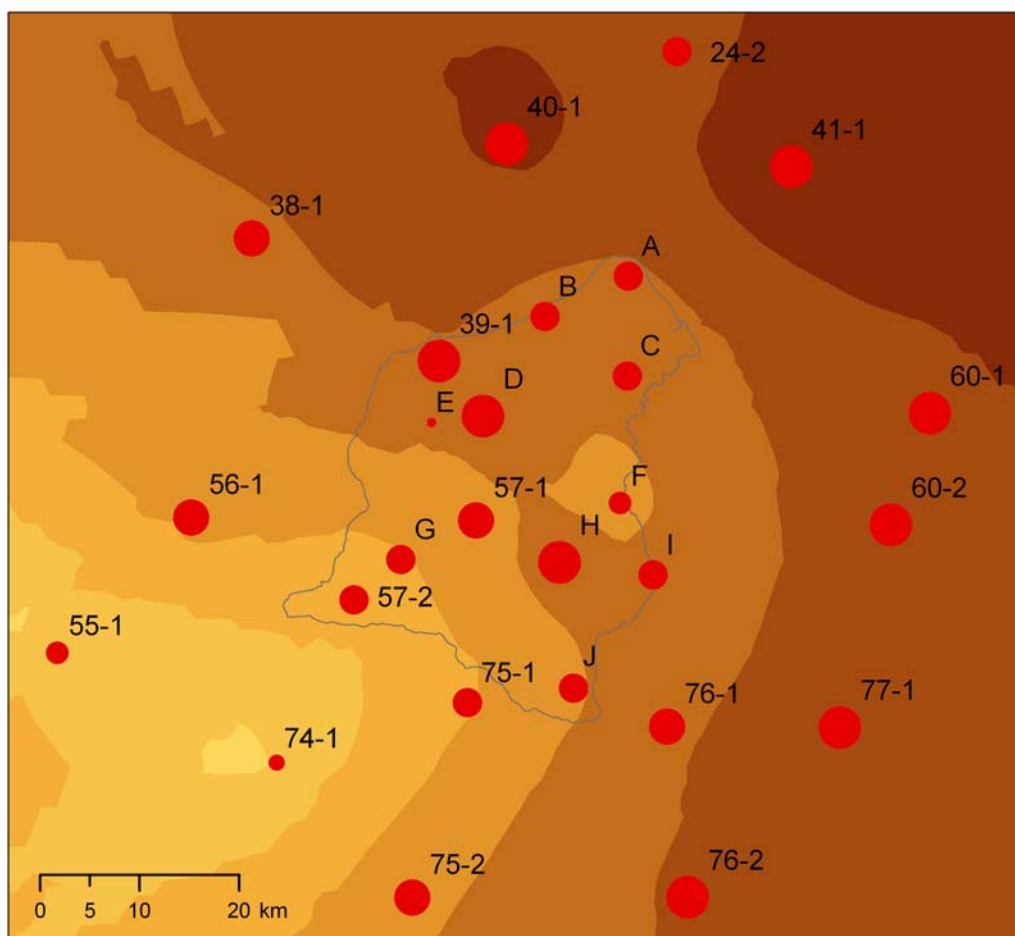
Karte 6



umweltbundesamt[®]

Zechmeister & Zechmeister-Boltenstern OEG

GIS-Bearbeitung: Ingrid Roder, April 2006

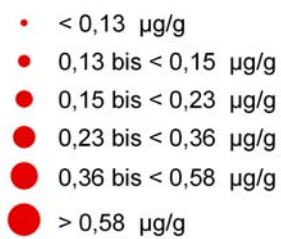
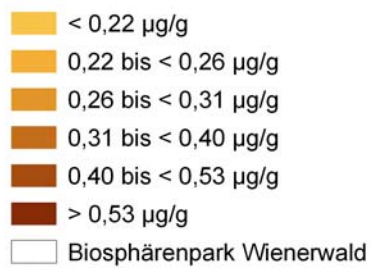
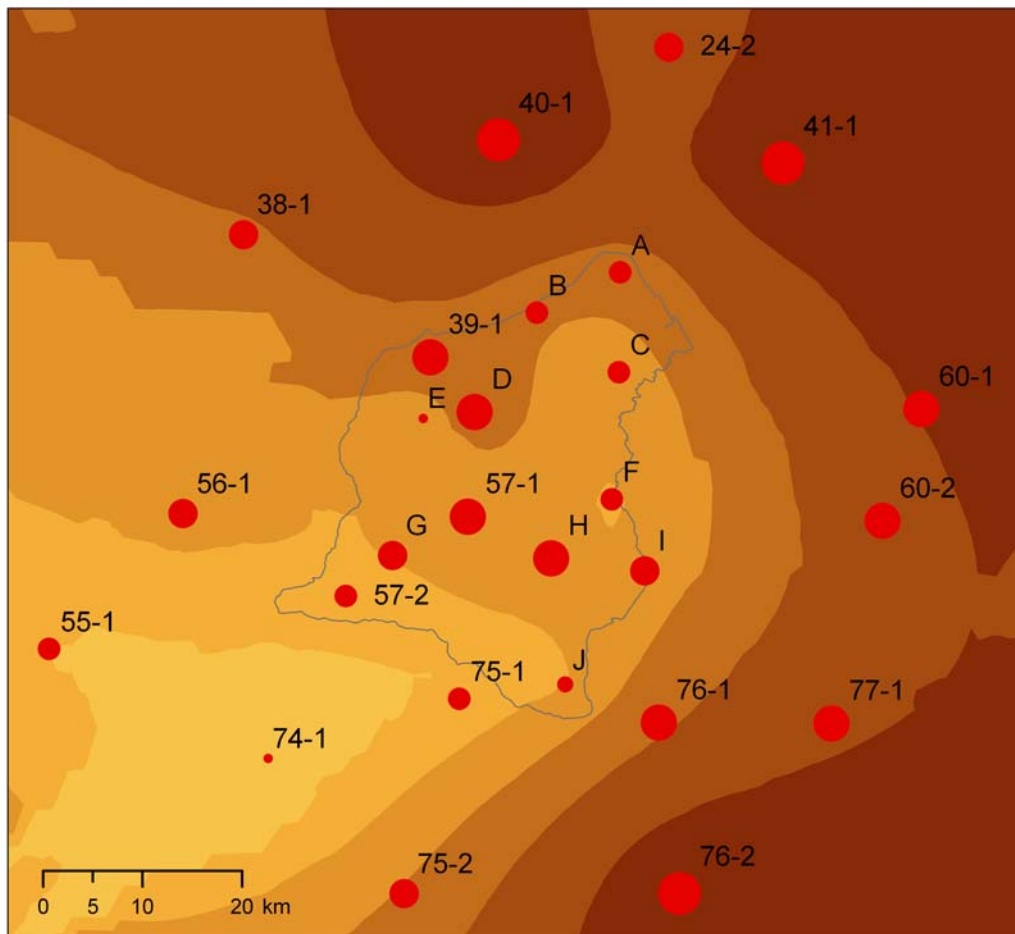


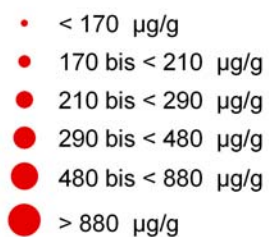
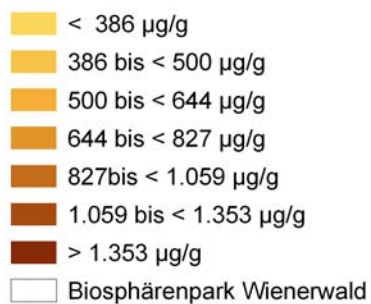
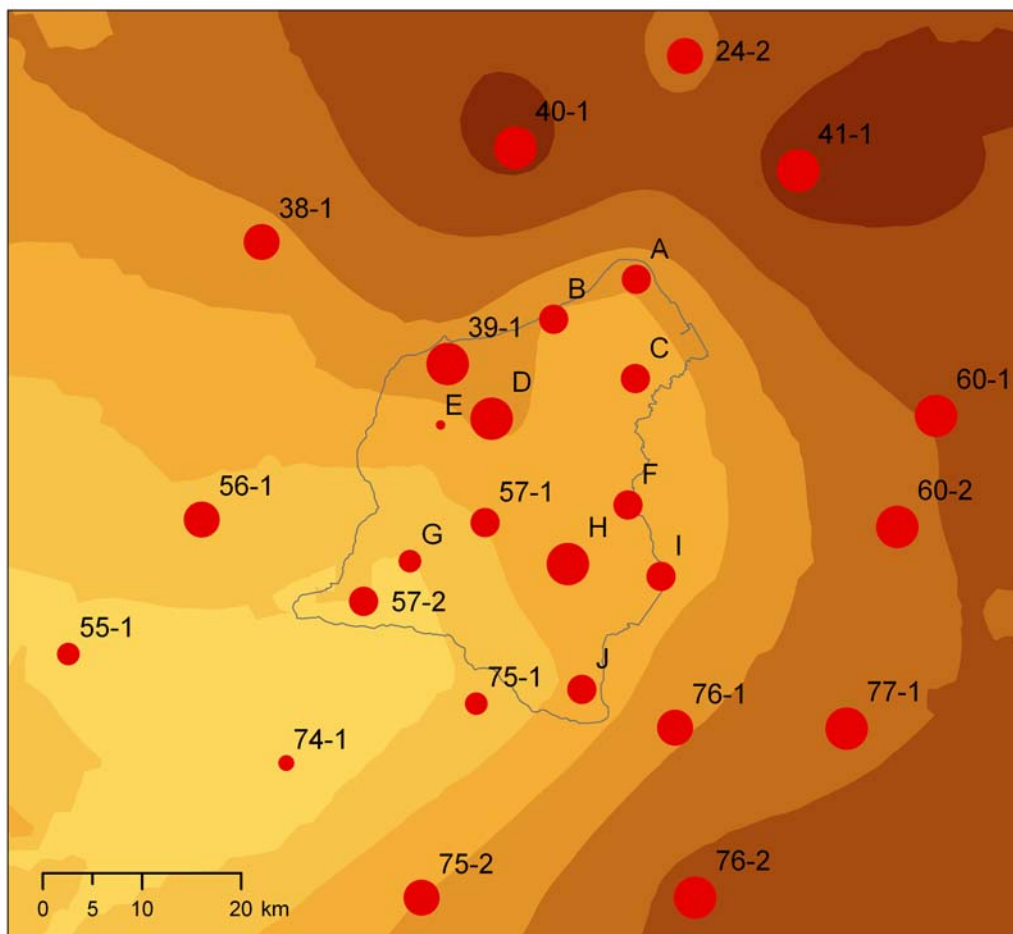
Biosphärenpark Wienerwald

umweltbundesamt[®]

Zechmeister & Zechmeister-Boltenstern OEG

GIS-Bearbeitung: Ingrid Roder, April 2006

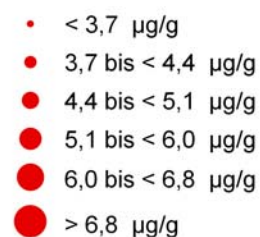
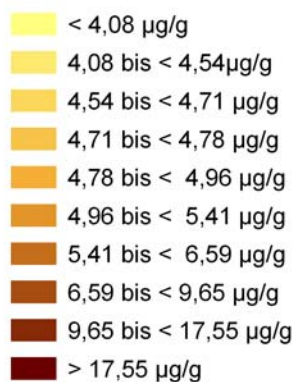
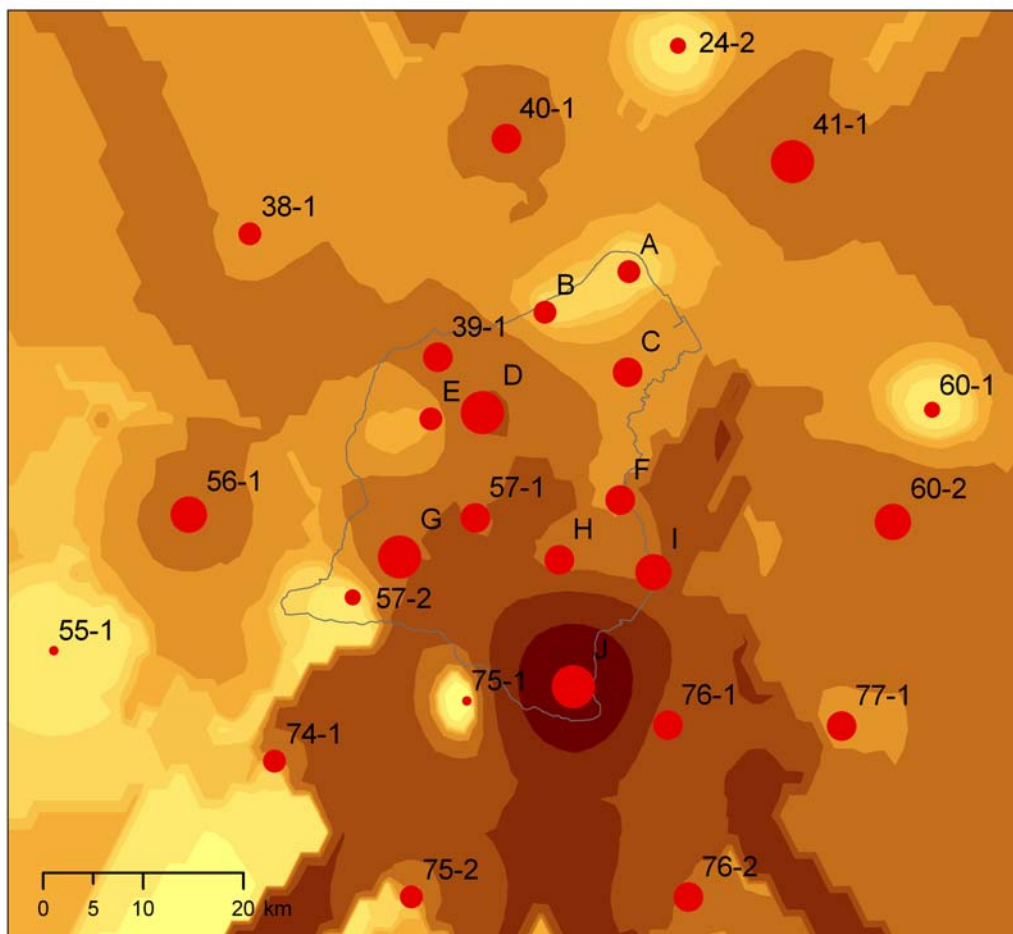




umweltbundesamt[®]

Zechmeister & Zechmeister-Boltenstern OEG

GIS-Bearbeitung: Ingrid Roder, April 2006



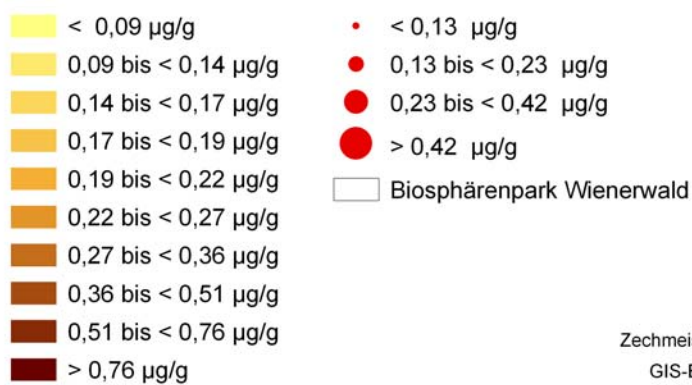
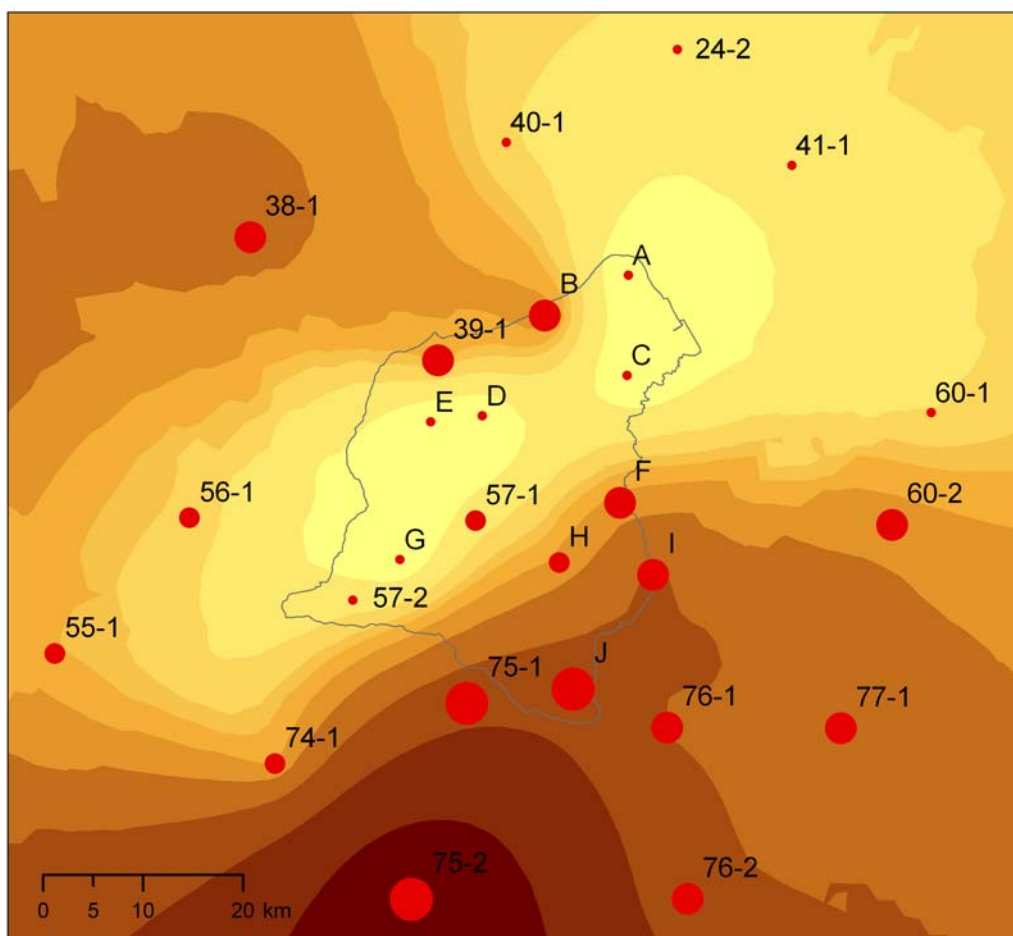
Biosphärenpark Wienerwald

umweltbundesamt[®]

Zechmeister & Zechmeister-Boltenstern OEG

GIS-Bearbeitung: Ingrid Roder, April 2006

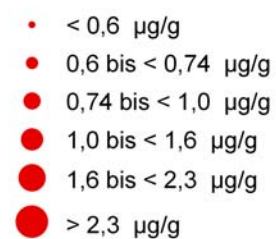
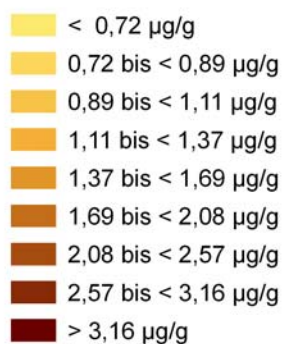
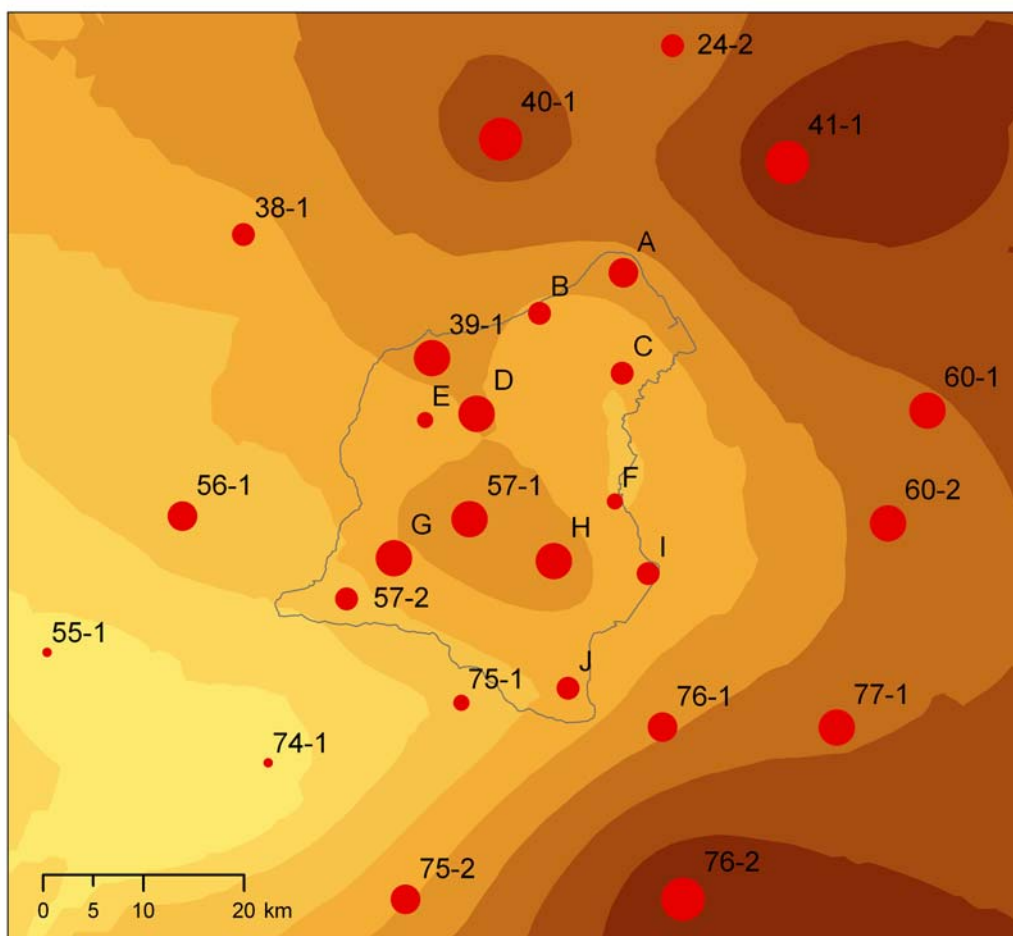
Molybdän in Moosen (Aufsammlung 2005) interpoliert Karte 11



umweltbundesamt[®]

Zechmeister & Zechmeister-Boltenstern OEG

GIS-Bearbeitung: Ingrid Roder, April 2006



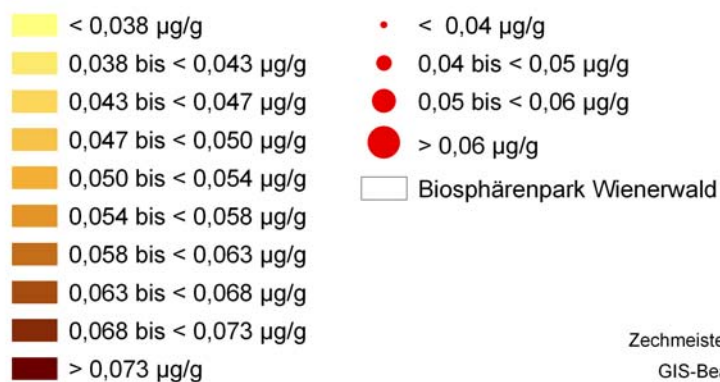
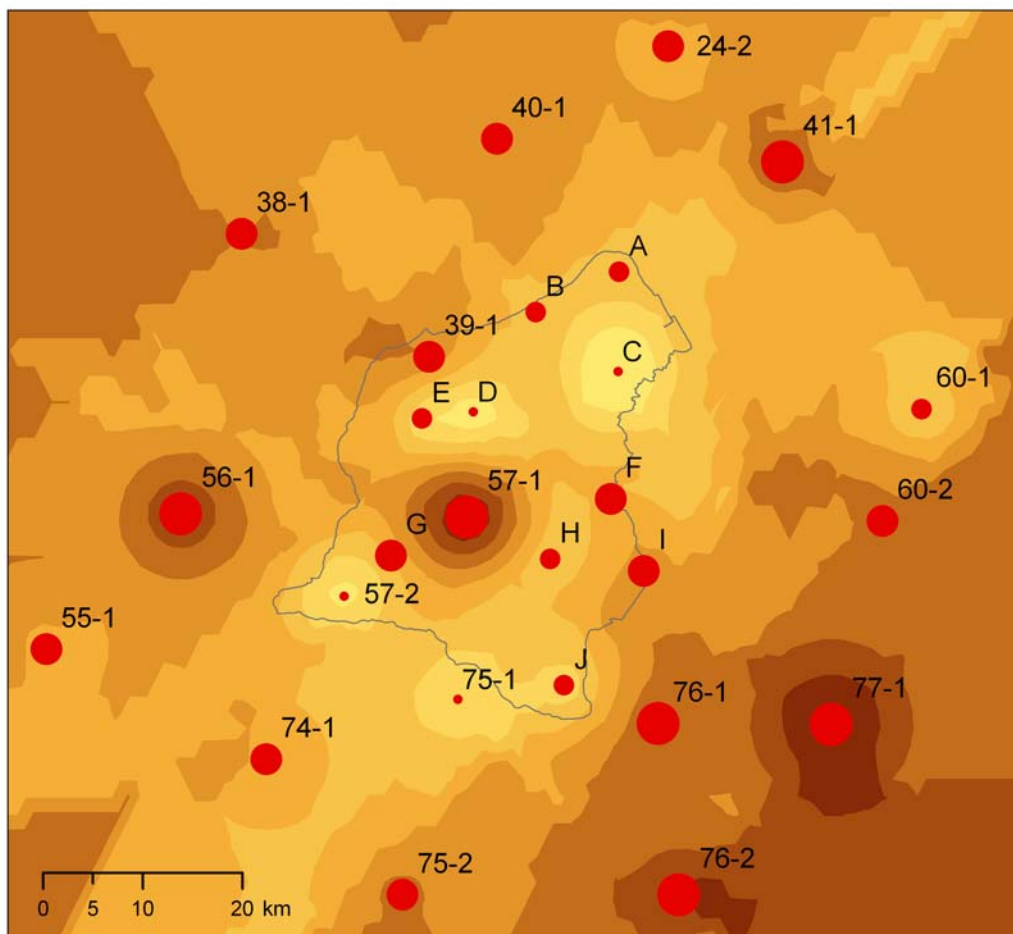
Biosphärenpark Wienerwald

umweltbundesamt[®]

Zechmeister & Zechmeister-Boltenstern OEG

GIS-Bearbeitung: Ingrid Roder, April 2006

Quecksilber in Moosen (Aufsammlung 2005) interpoliert Karte 13

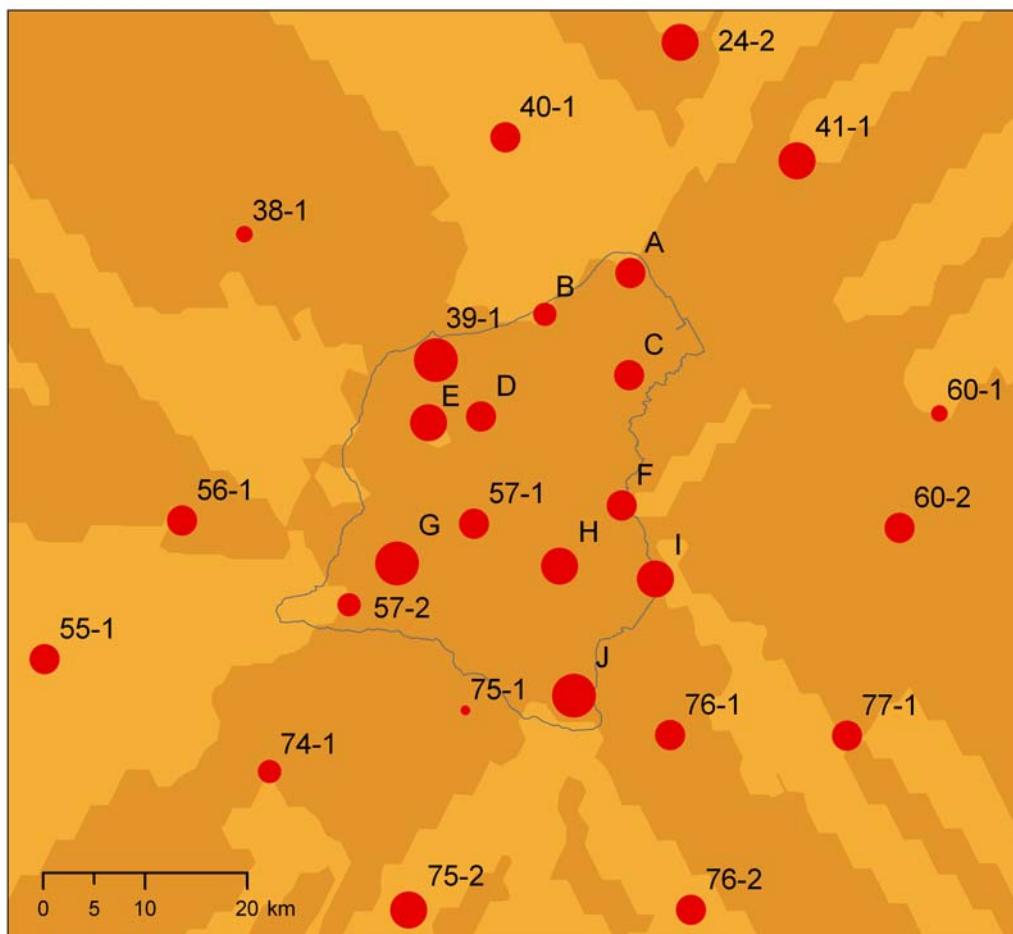


umweltbundesamt[®]

Zechmeister & Zechmeister-Boltenstern OEG

GIS-Bearbeitung: Ingrid Roder, April 2006

Schwefel in Moosen (Aufsammlung 2005) interpoliert Karte 14



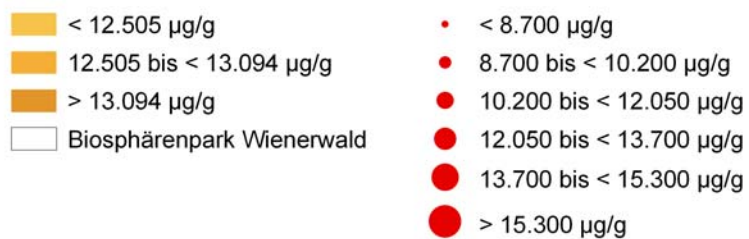
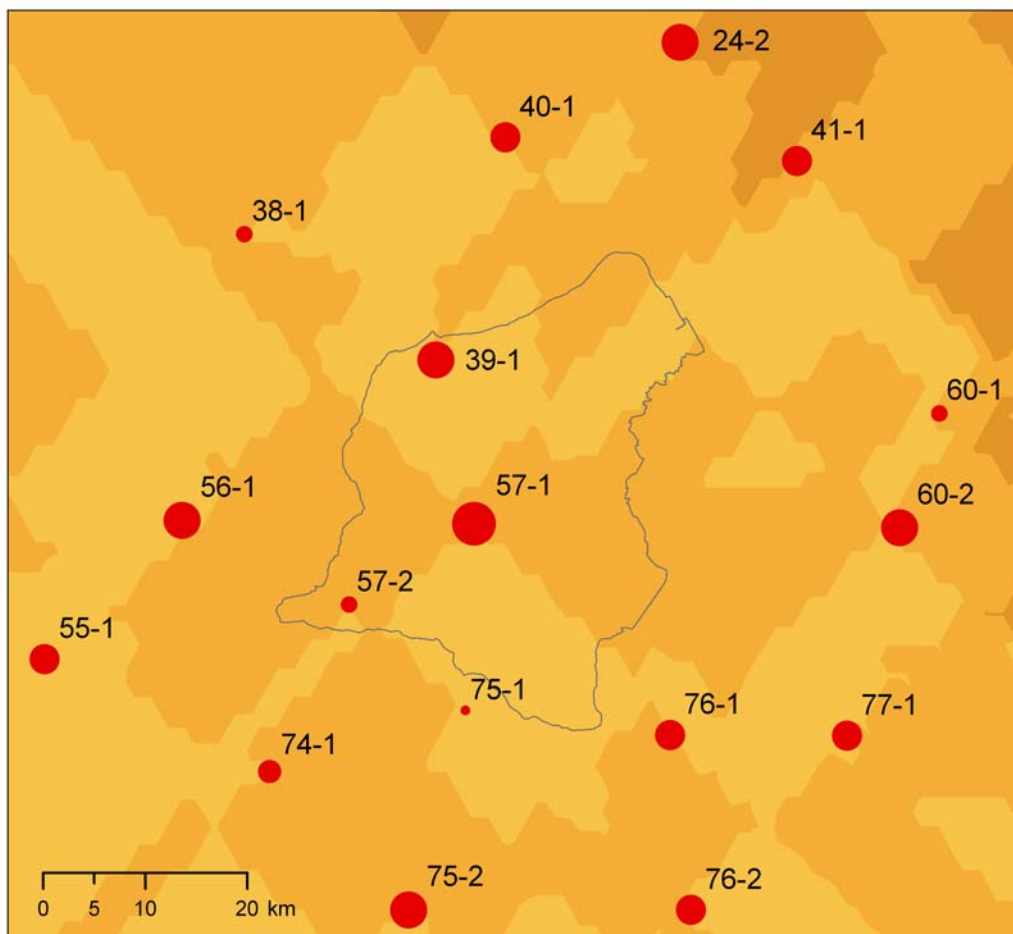
< 1.080 µg/g
 > 1.080 µg/g
 Biosphärenpark Wienerwald

< 770 µg/g
 770 bis < 850 µg/g
 850 bis < 970 µg/g
 970 bis < 1.100 µg/g
 1.100 bis < 1.200 µg/g
 > 1.200 µg/g

umweltbundesamt[®]

Zechmeister & Zechmeister-Boltenstern OEG
 GIS-Bearbeitung: Ingrid Roder, April 2006

Stickstoff in Moosen (Aufsammlung 2005) interpoliert Karte 15

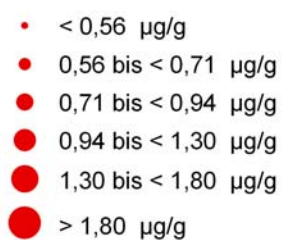
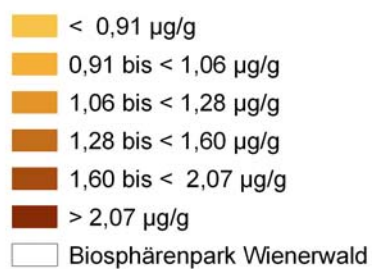
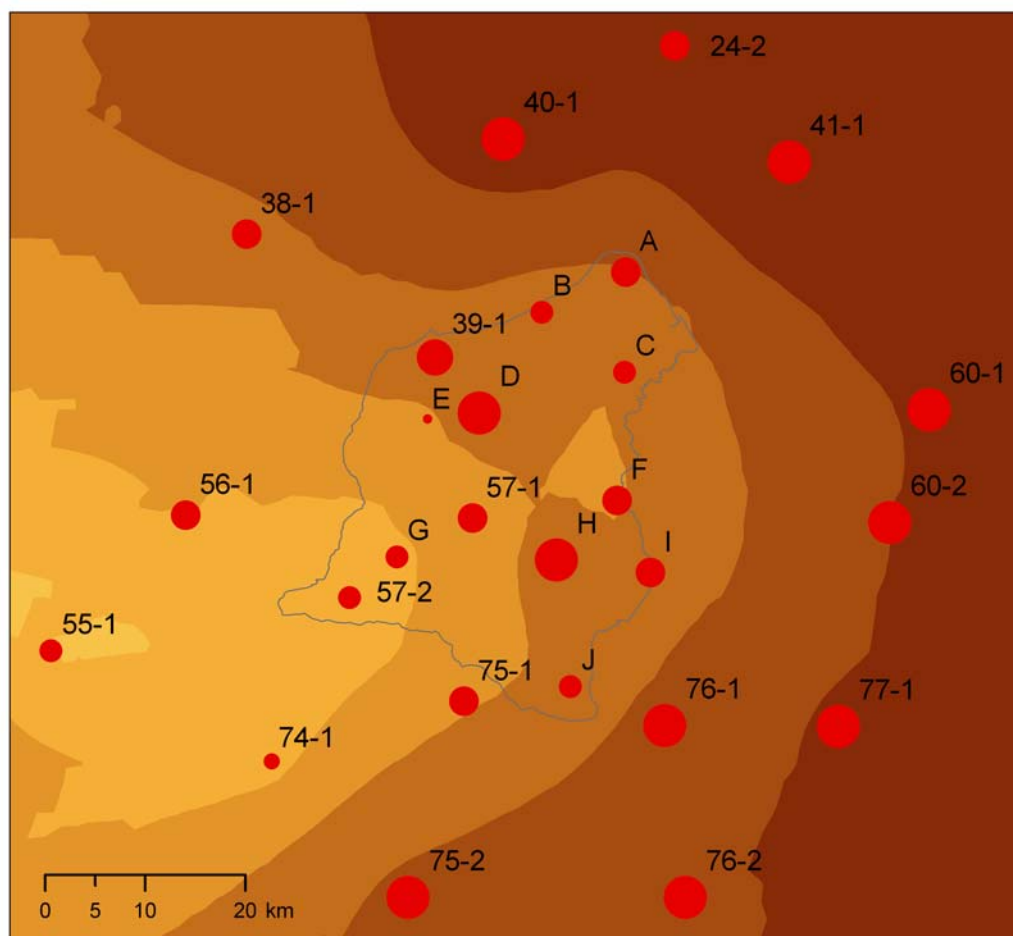


umweltbundesamt[®]

Zechmeister & Zechmeister-Boltenstern OEG

GIS-Bearbeitung: Ingrid Roder, April 2006

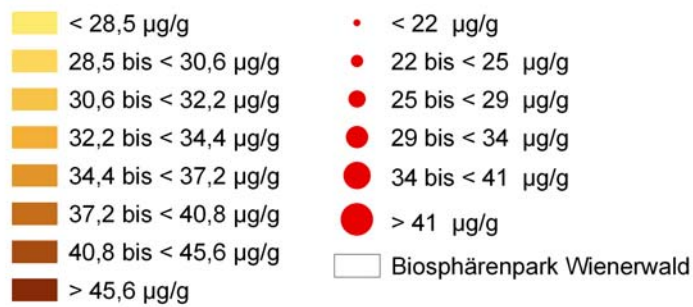
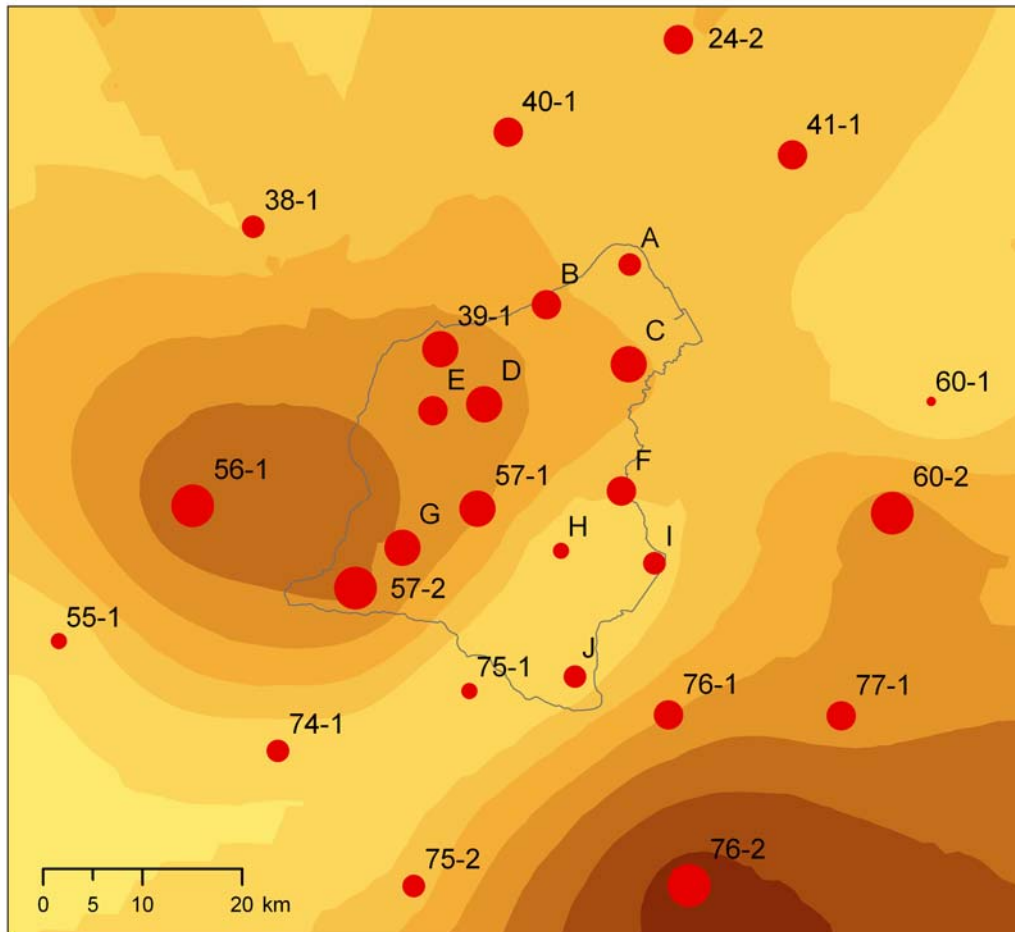
Vanadium in Moosen (Aufsammlung 2005) interpoliert Karte 16



umweltbundesamt[®]

Zechmeister & Zechmeister-Boltenstern OEG

GIS-Bearbeitung: Ingrid Roder, April 2006



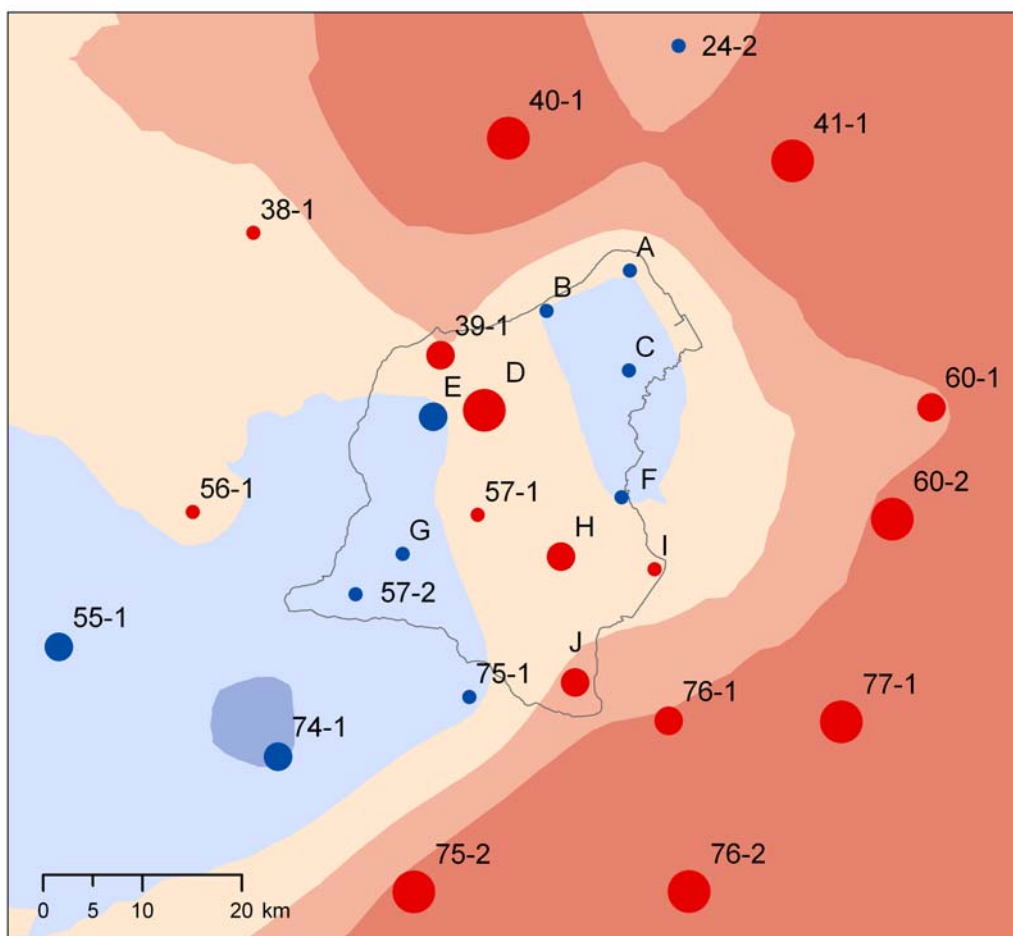
umweltbundesamt[®]

Zechmeister & Zechmeister-Boltenstern OEG

GIS-Bearbeitung: Ingrid Roder, April 2006

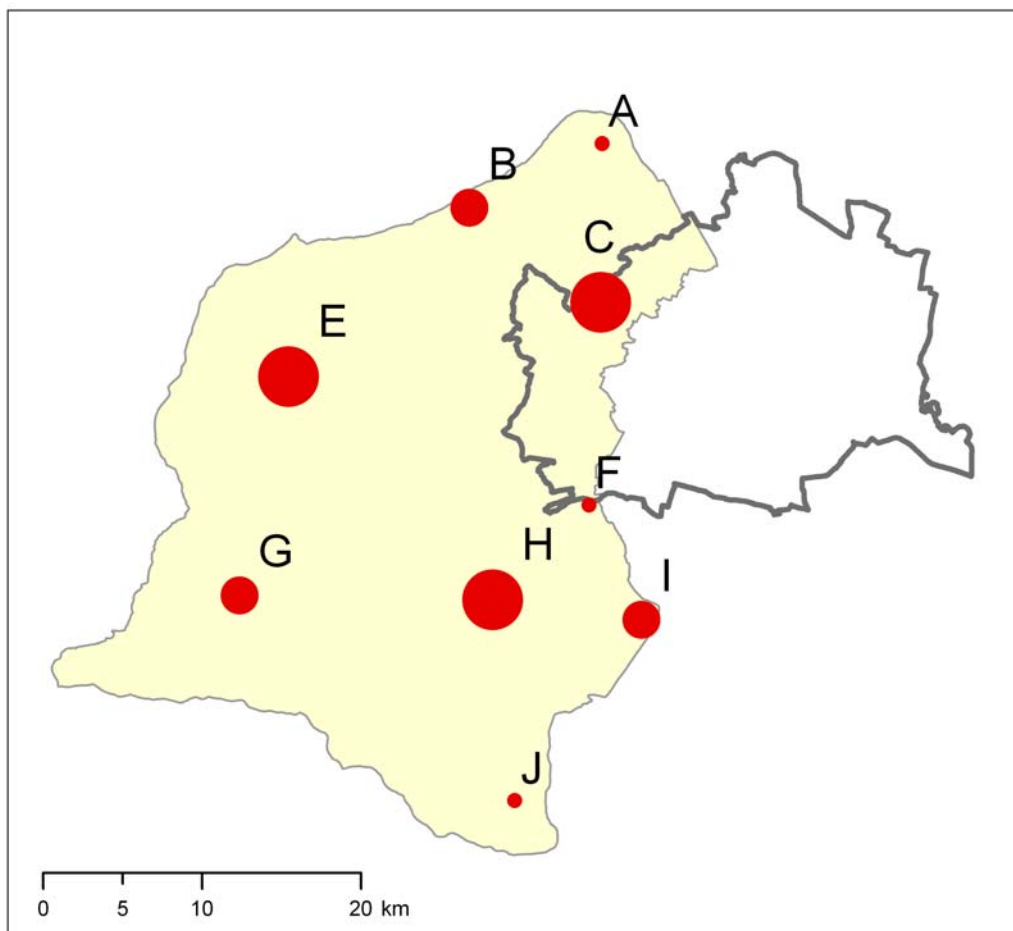
**Summe aller untersuchten Elemente
Abweichungen vom Median - interpoliert**

Karte 18

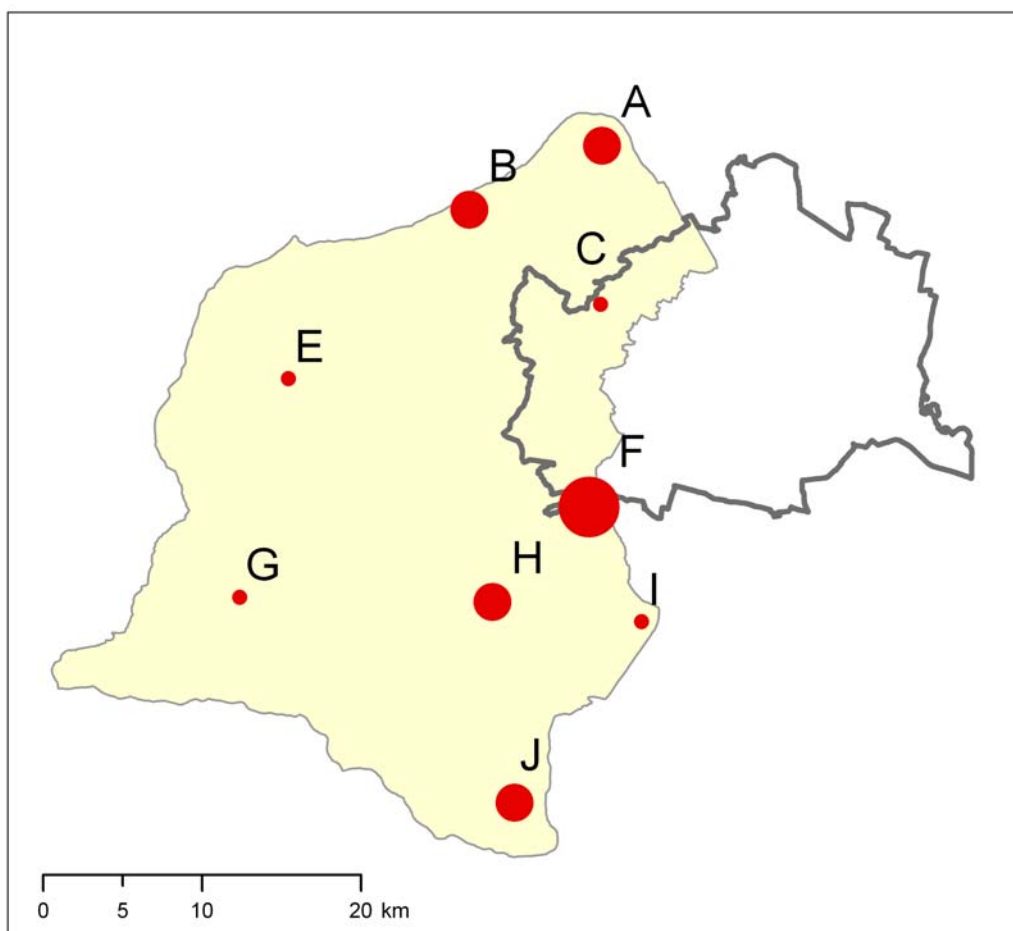


umweltbundesamt[®]

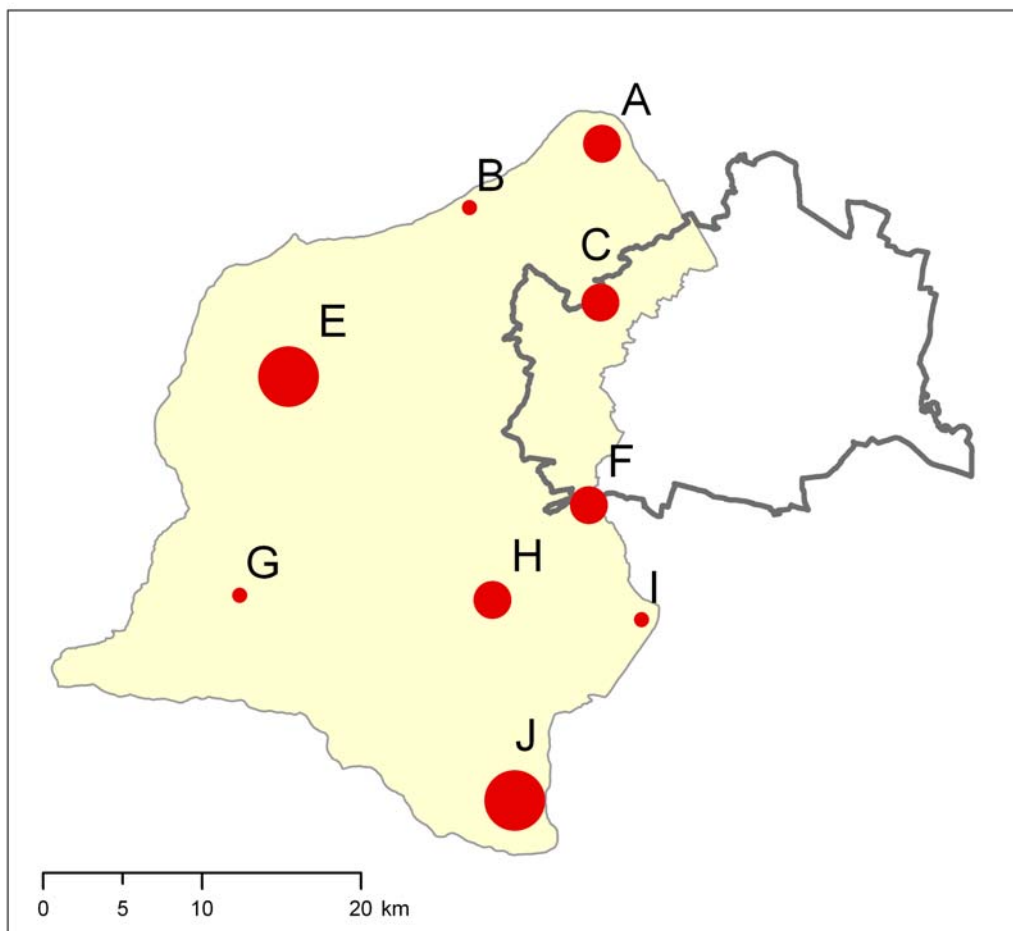
Zechmeister & Zechmeister-Boltenstern OEG
GIS-Bearbeitung: Ingrid Roder, April 2006



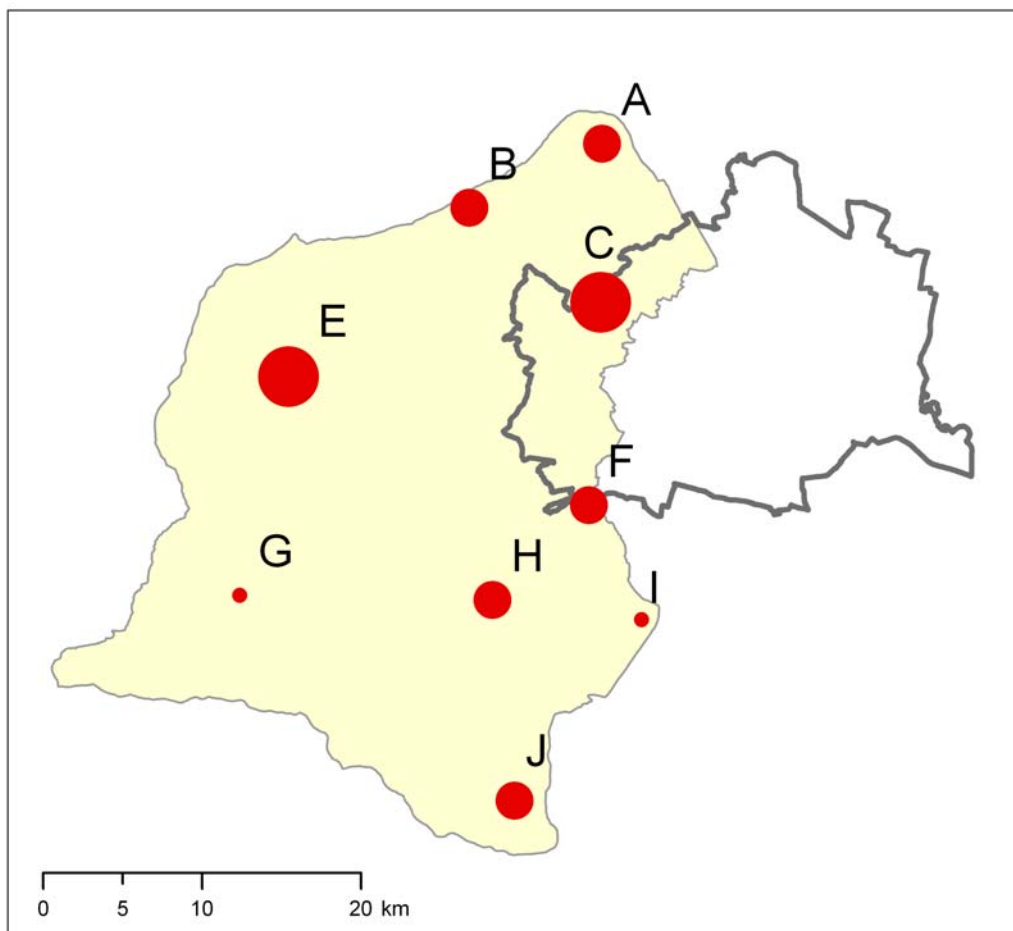
- 0,0 - 2,9
 - 3,0 - 7,9
 - 8,0 - 13,0
- Biosphärenpark Wienerwald
□ Wien



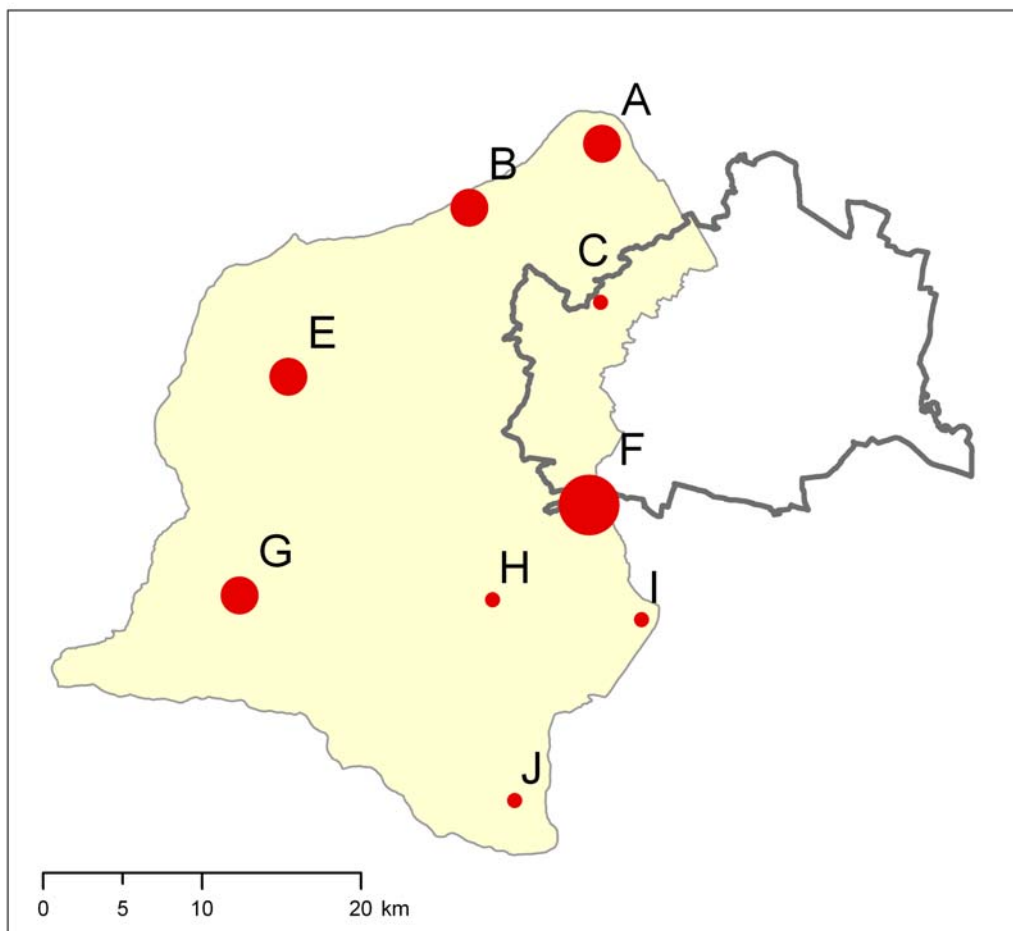
- nicht nachweisbar
 - 0,1 - 1,4
 - 1,5 - 6,6
- Biosphärenpark Wienerwald
□ Wien



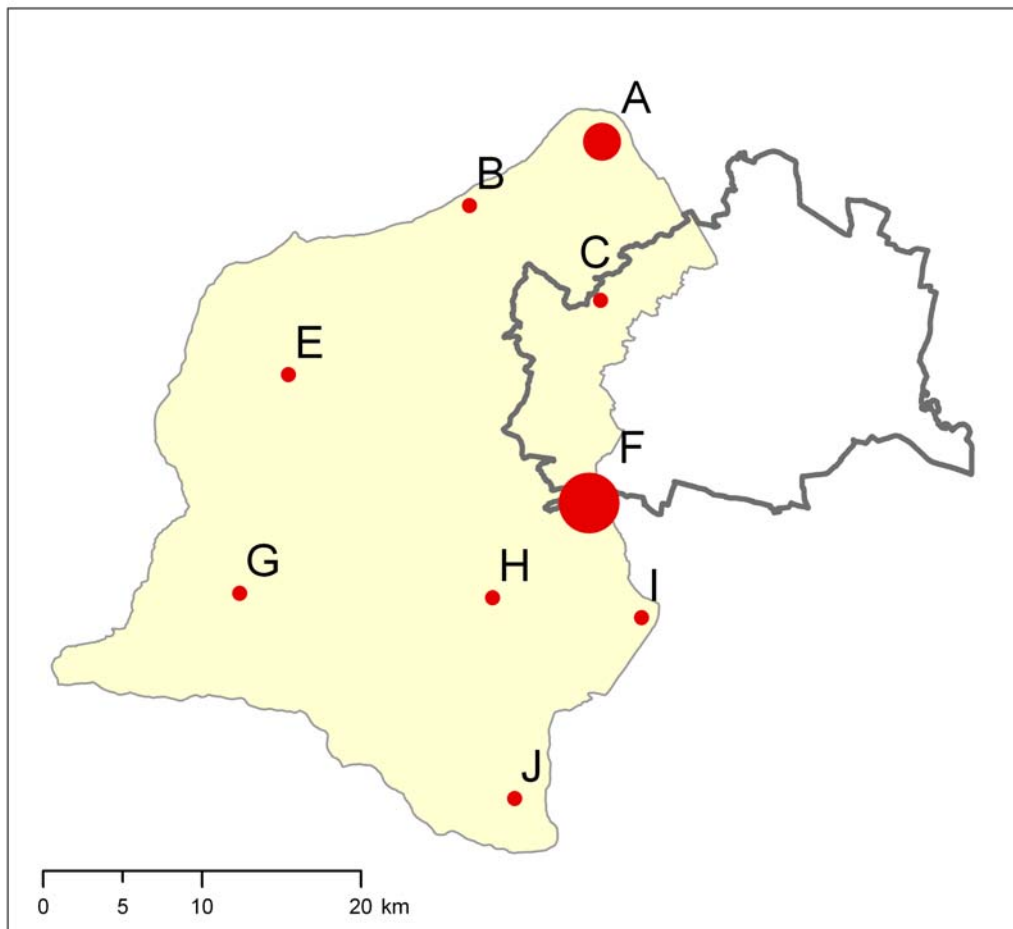
- 2,1 - 2,3
 - 2,4 - 3,4
 - 3,5 - 5,7
- Biosphärenpark Wienerwald
□ Wien



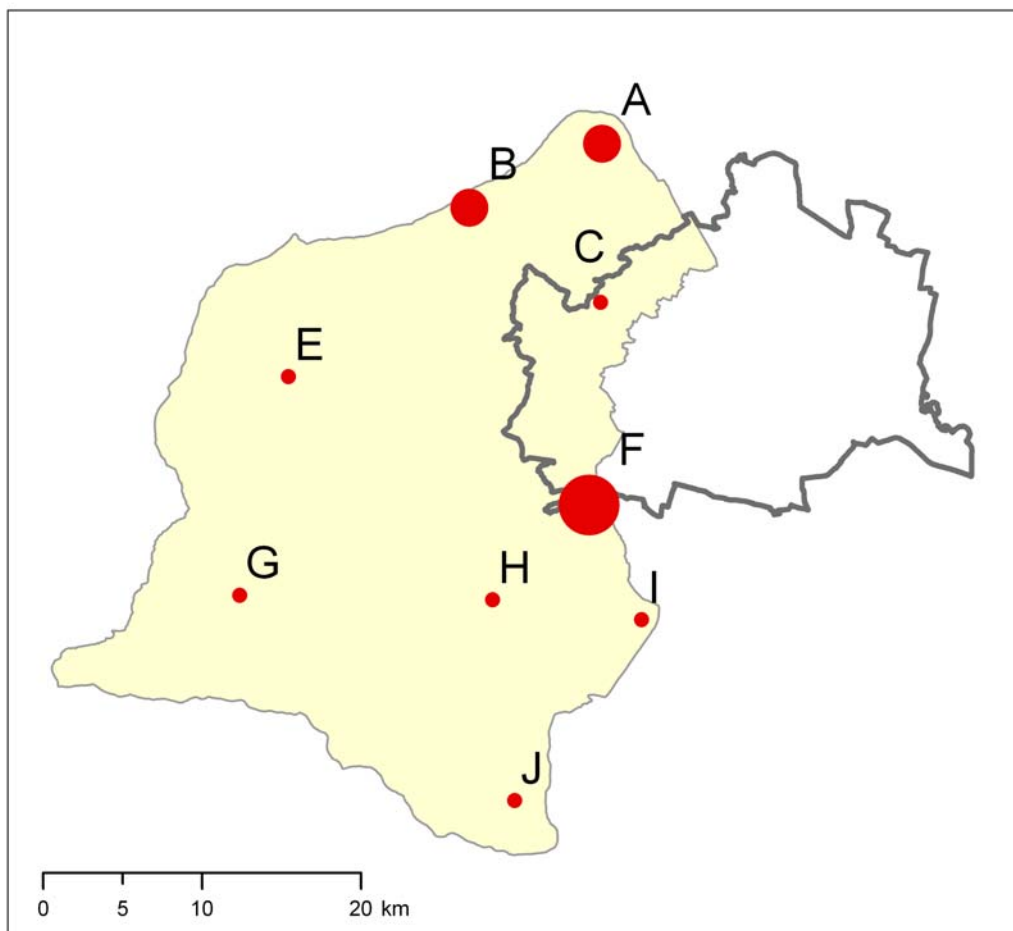
- 3,8 - 4,6
 - 4,7 - 5,6
 - 5,7 - 6,6
- Legend:
- Biosphärenpark Wienerwald
 - Wien



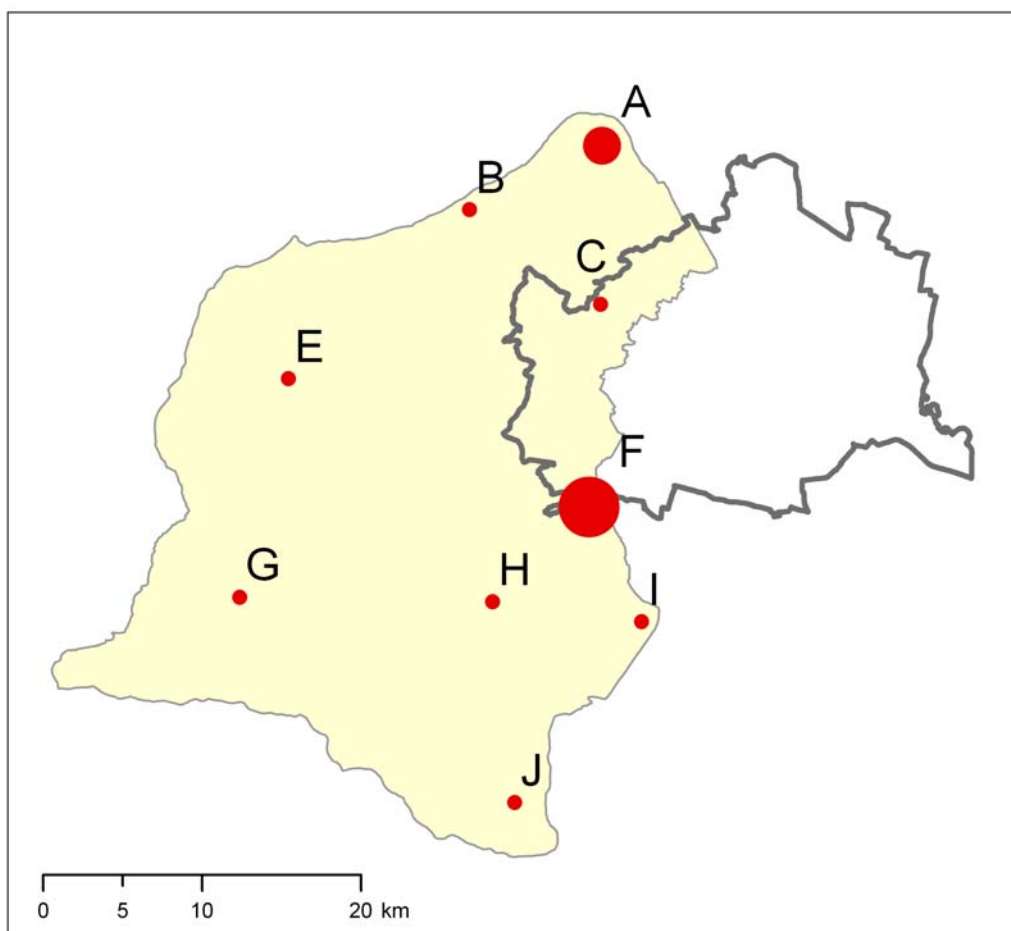
- 24 - 33
 - 34 - 47
 - 48 - 63
- Biosphärenpark Wienerwald
□ Wien



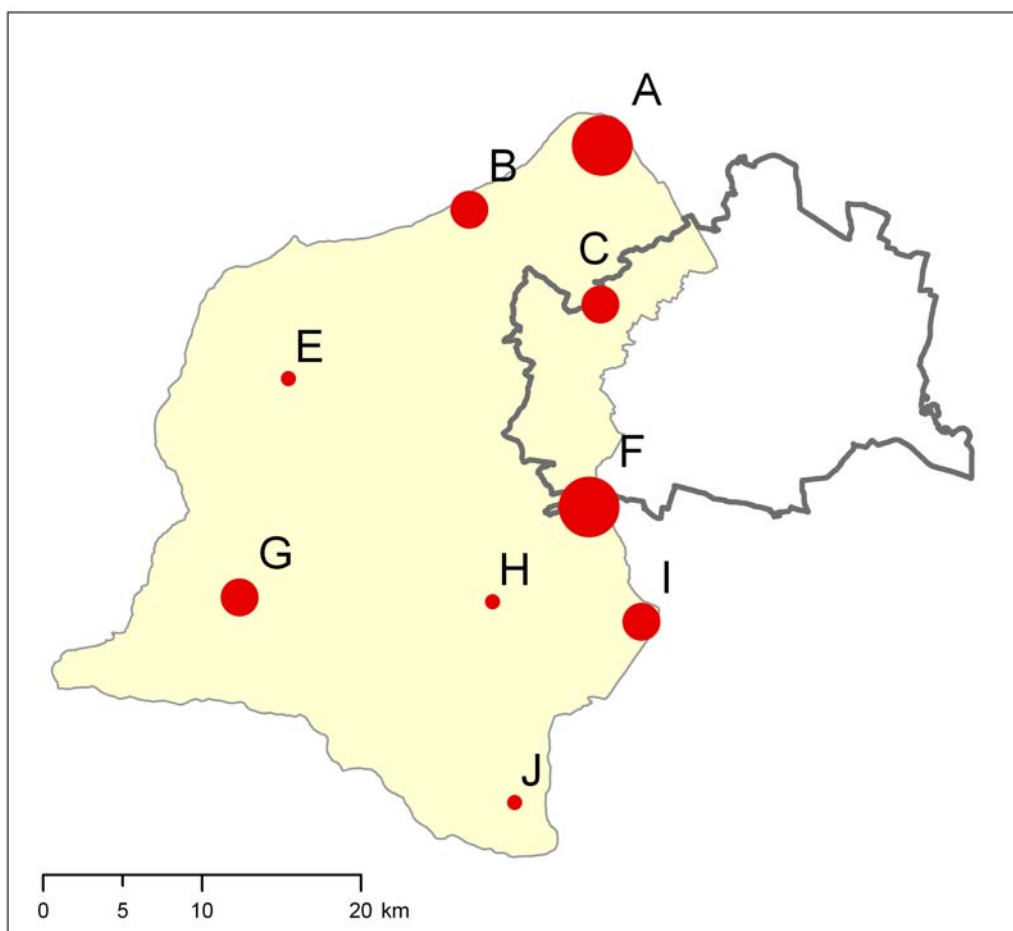
- 1,2 - 2,1
 - 2,2 - 2,8
 - 2,9 - 12,0
- Biosphärenpark Wienerwald
□ Wien



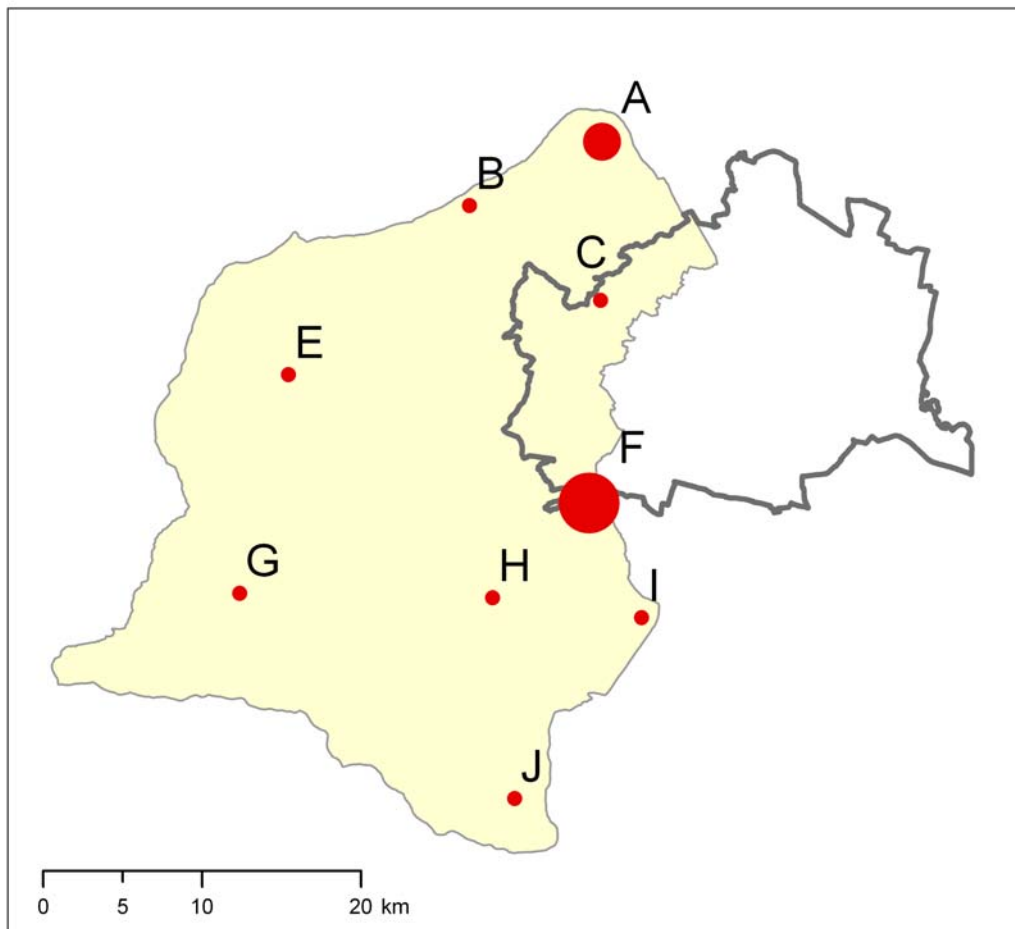
- 13 - 21
 - 22 - 55
 - 56 - 140
- Biosphärenpark Wienerwald
□ Wien



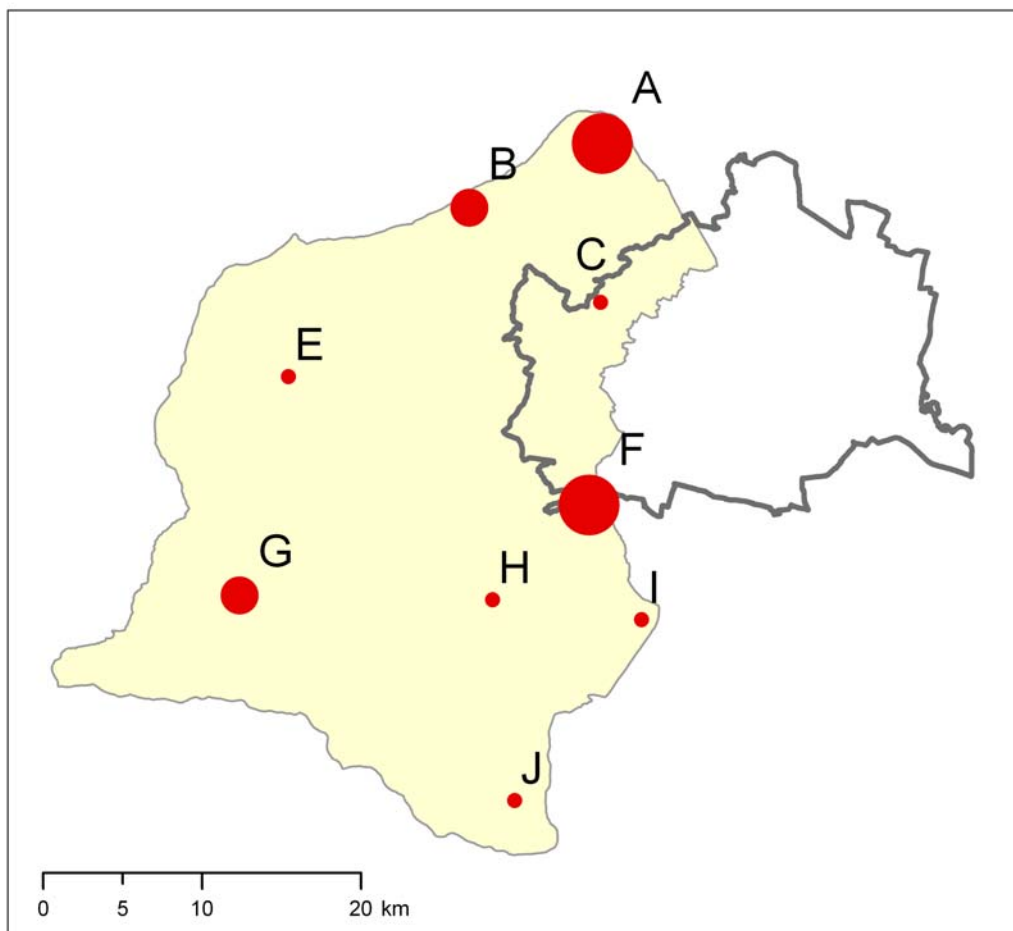
- 8 - 25
 - 26 - 42
 - 43 - 94
- Biosphärenpark Wienerwald
□ Wien



- 2 - 3
 - 4 - 6
 - 7 - 32
- Biosphärenpark Wienerwald
□ Wien



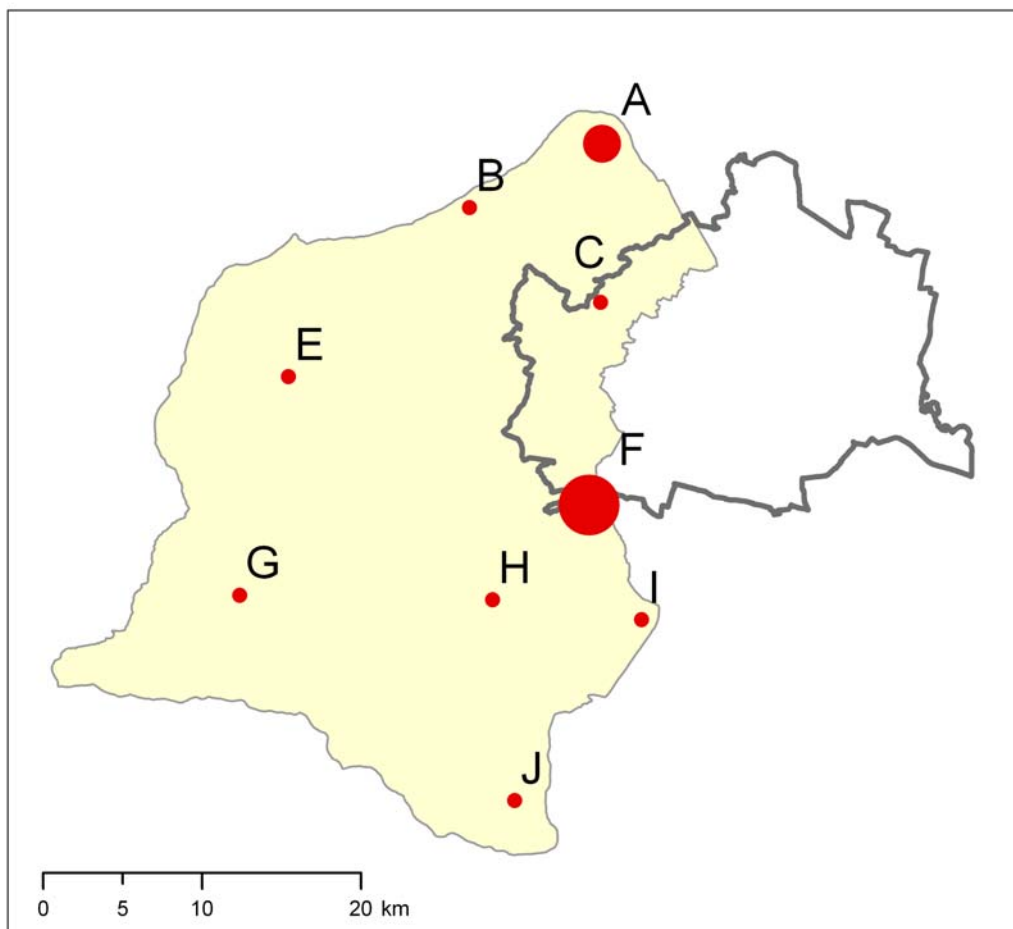
- 5 - 14
 - 15 - 27
 - 28 - 59
- Biosphärenpark Wienerwald
□ Wien



- 8 - 13
 - 14 - 18
 - 19 - 73
- Biosphärenpark Wienerwald
□ Wien

Benzo(k)fluoranthen in Moosen (Aufsammlung 2005)

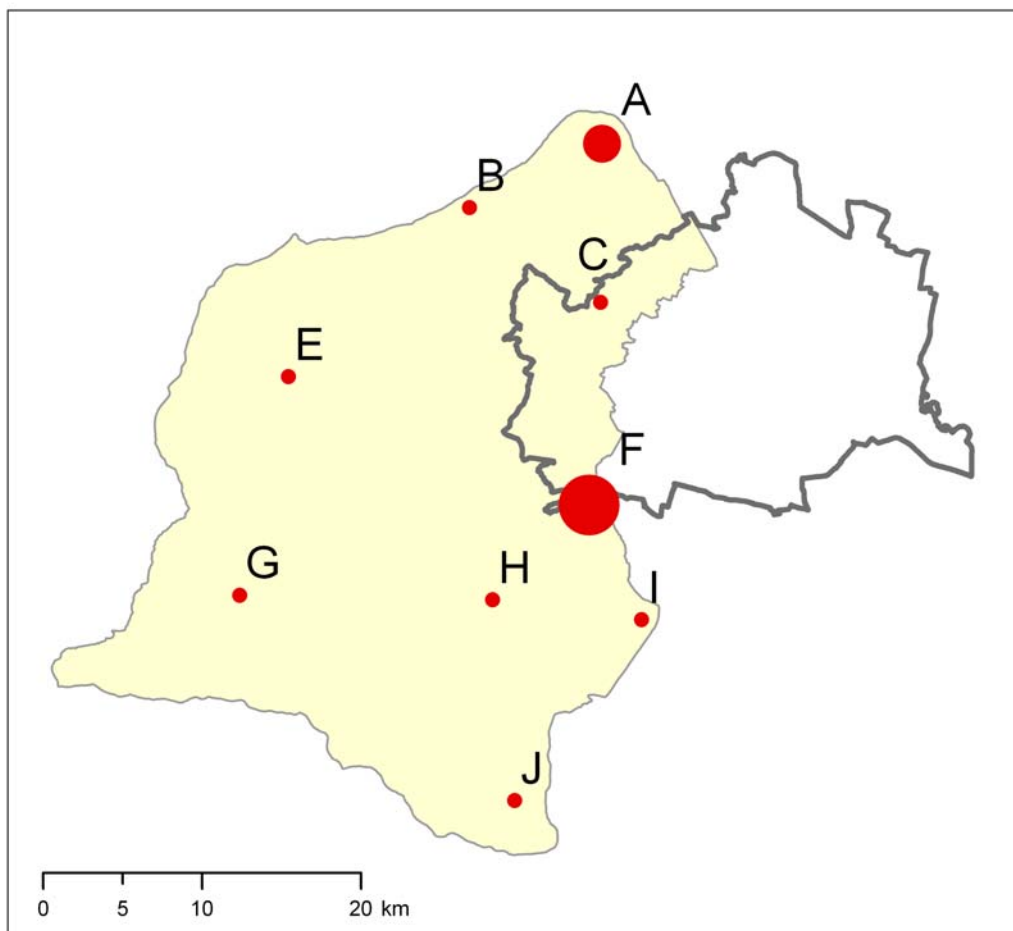
Karte 30



- 4 - 7
 - 8 - 18
 - 19 - 38
- Legend:
- Biosphärenpark Wienerwald
 - Wien

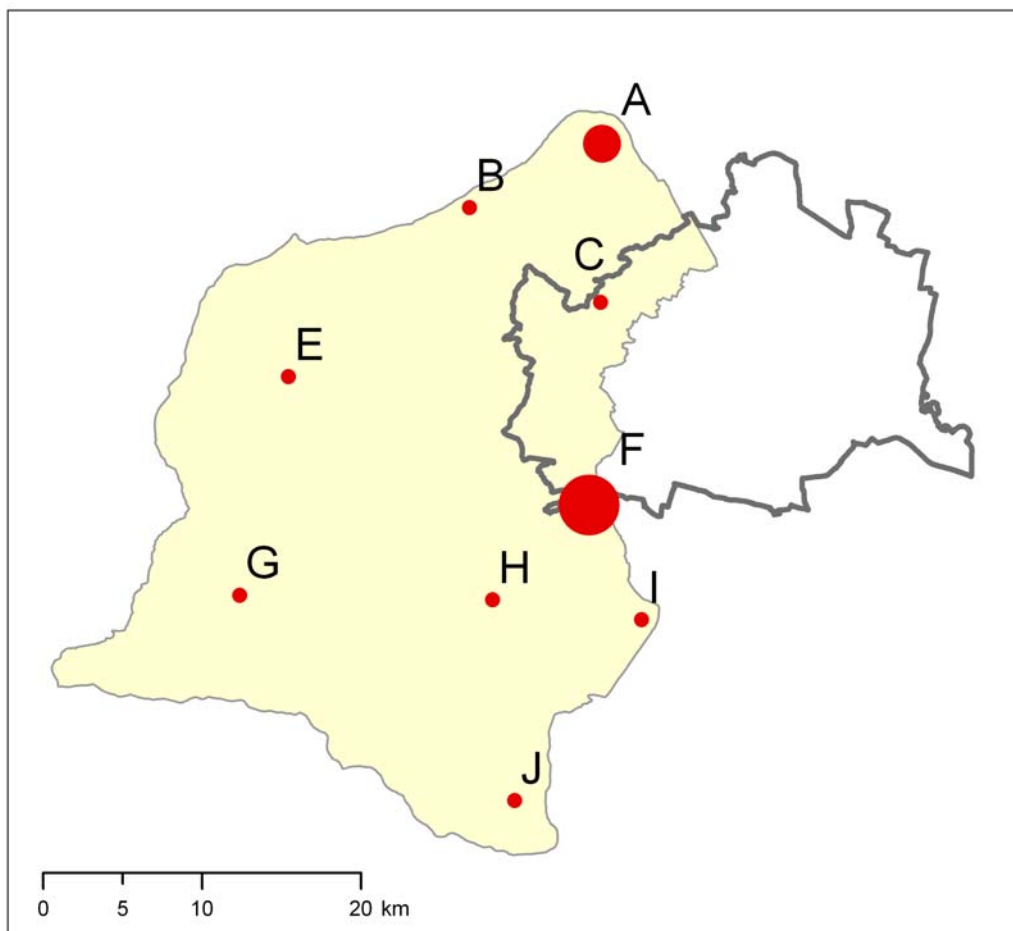
umweltbundesamt[®]

Zechmeister & Zechmeister-Boltenstern OEG
GIS-Bearbeitung: Ingrid Roder, April 2006



- 6 - 11
 - 12 - 29
 - 30 - 59
- Biosphärenpark Wienerwald
□ Wien

Indeno(1,2,3-c,d)pyren in Moosen (Aufsammlung 2005) Karte 32

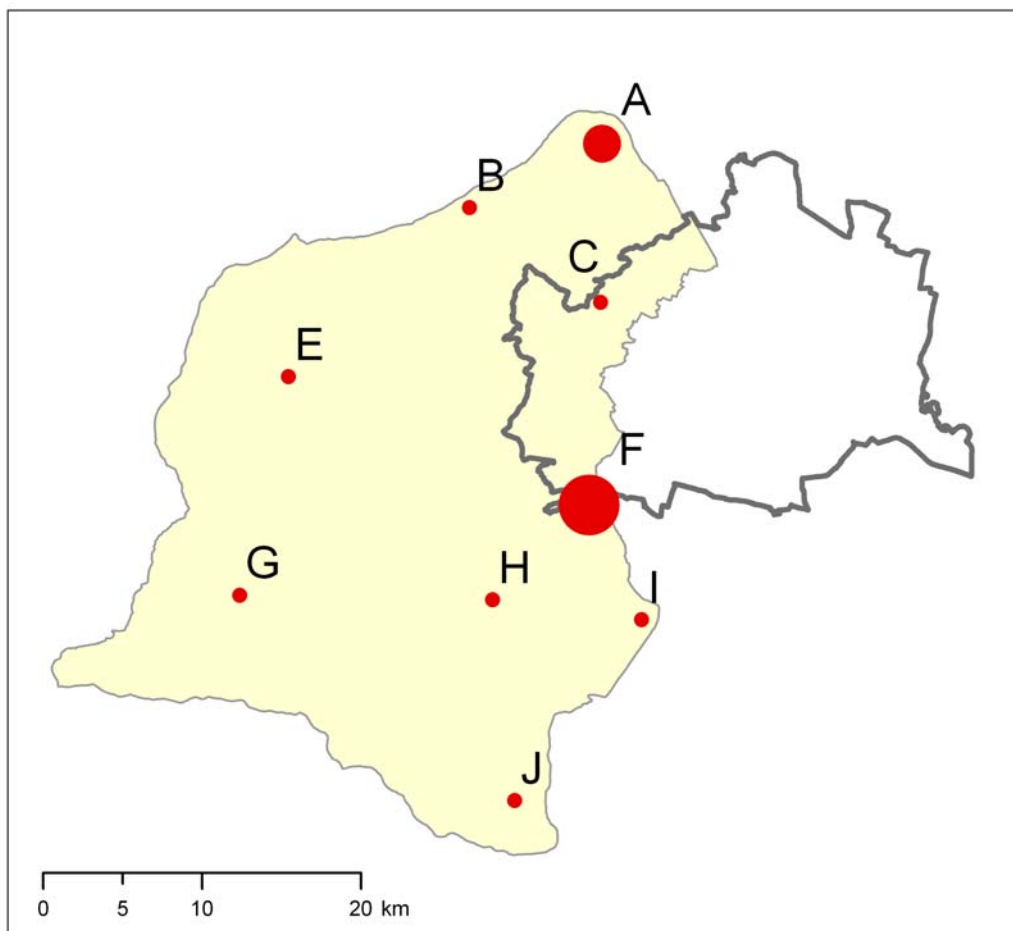


- 8 - 15
 - 16 - 27
 - 28 - 64
- Biosphärenpark Wienerwald
□ Wien

umweltbundesamt[®]

Zechmeister & Zechmeister-Boltenstern OEG
GIS-Bearbeitung: Ingrid Roder, April 2006

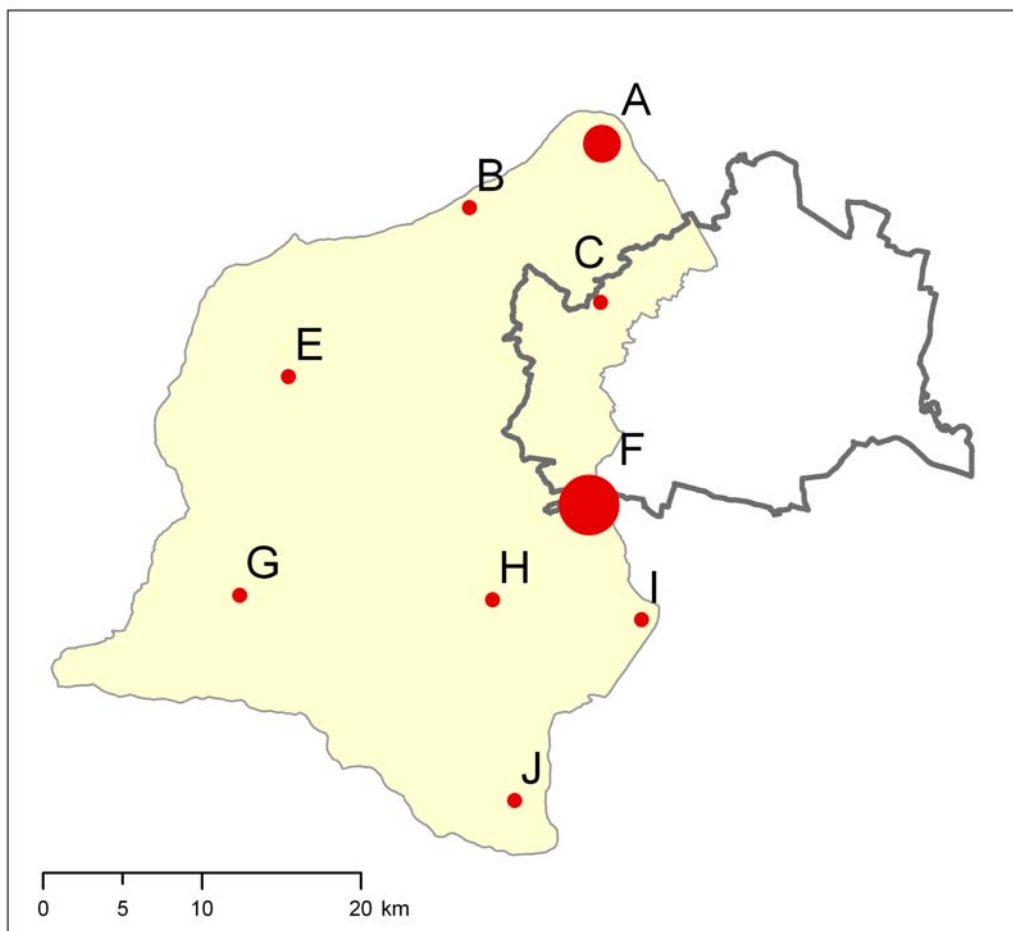
Dibenz(a,h)anthracen in Moosen (Aufsammlung 2005) Karte 33



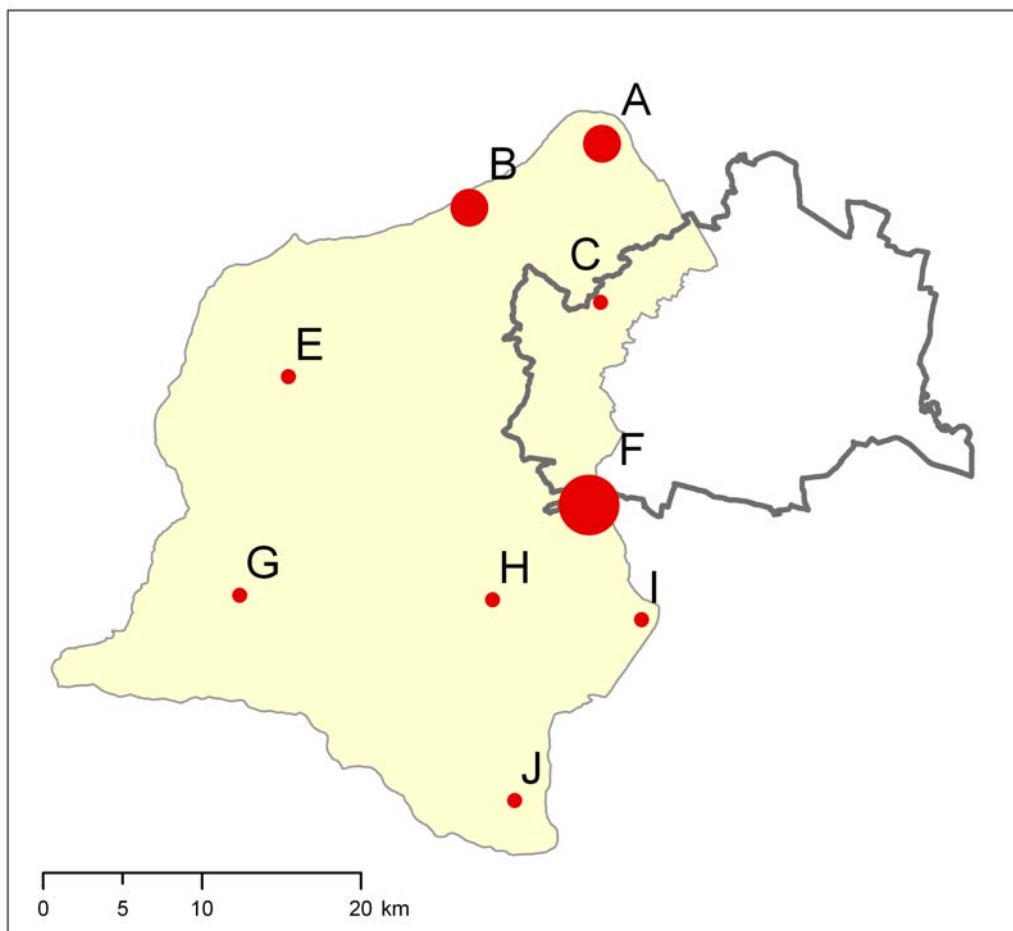
- 0,0 - 1,7
 - 1,8 - 5,2
 - 5,3 - 9,0
- Biosphärenpark Wienerwald
□ Wien

umweltbundesamt[®]

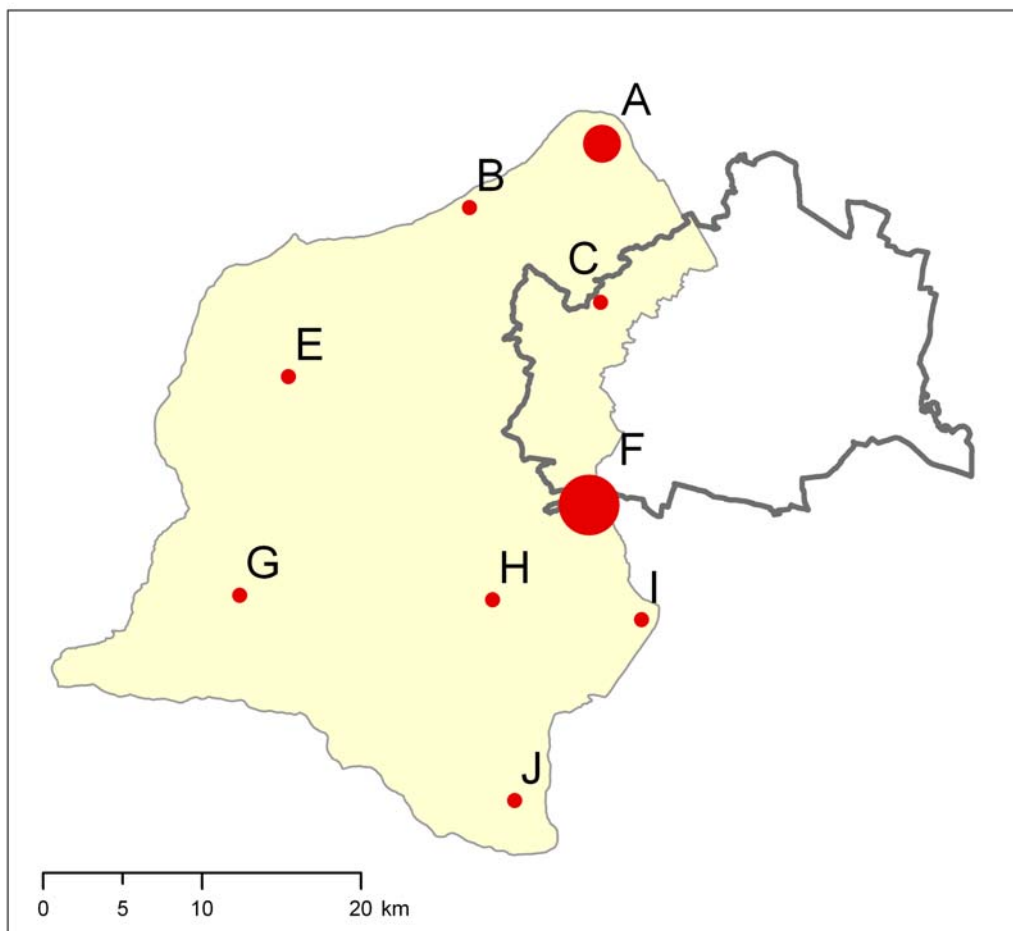
Zechmeister & Zechmeister-Boltenstern OEG
GIS-Bearbeitung: Ingrid Roder, April 2006



- 7 - 16
 - 17 - 25
 - 26 - 57
- Legend for geographical areas:
- Biosphärenpark Wienerwald
 - Wien



- 2,2 - 5,1
 - 5,2 - 8,4
 - 8,5 - 18,0
- Biosphärenpark Wienerwald
□ Wien



- 120 - 210
 - 211 - 360
 - 361 - 730
- Biosphärenpark Wienerwald
□ Wien