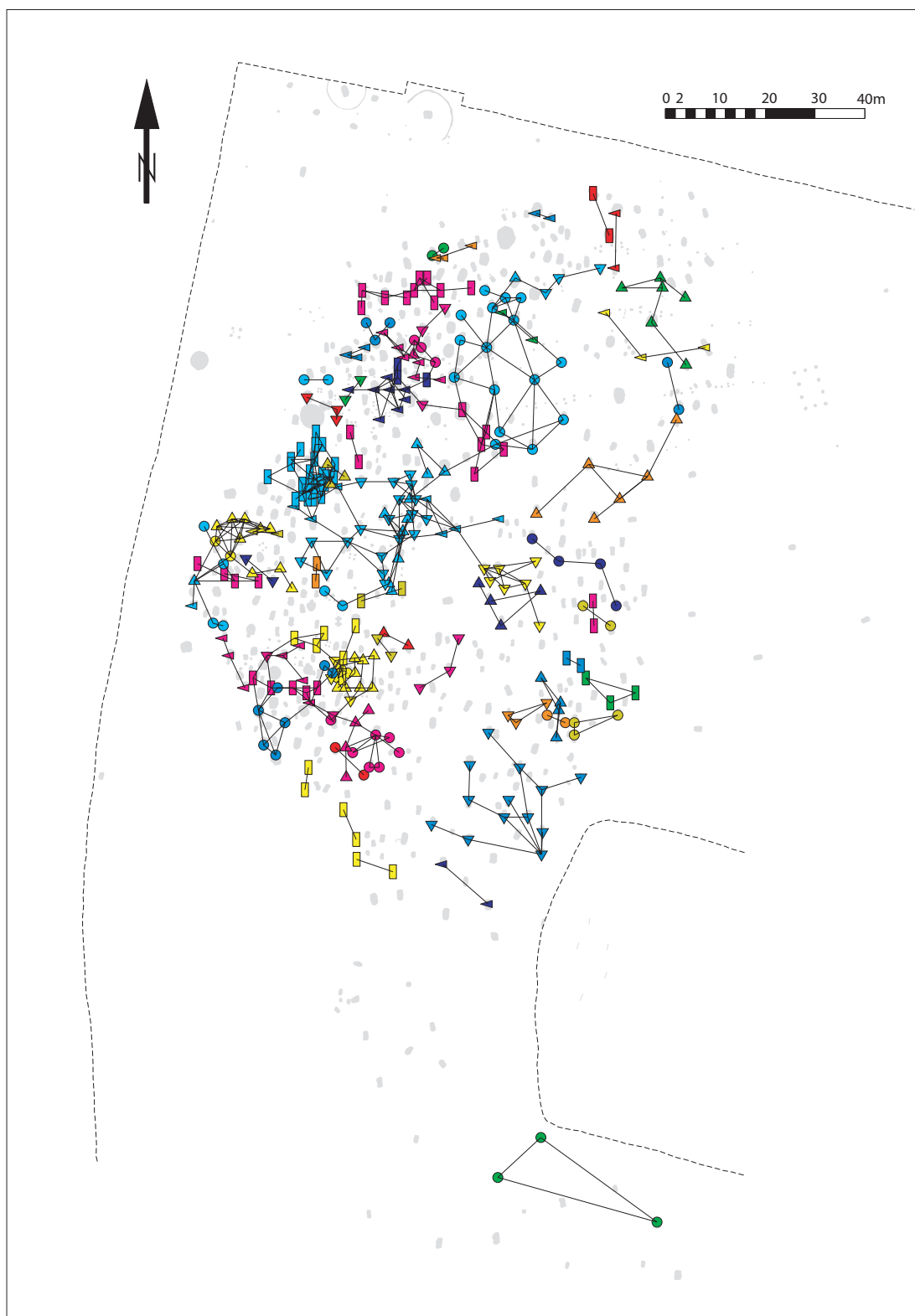
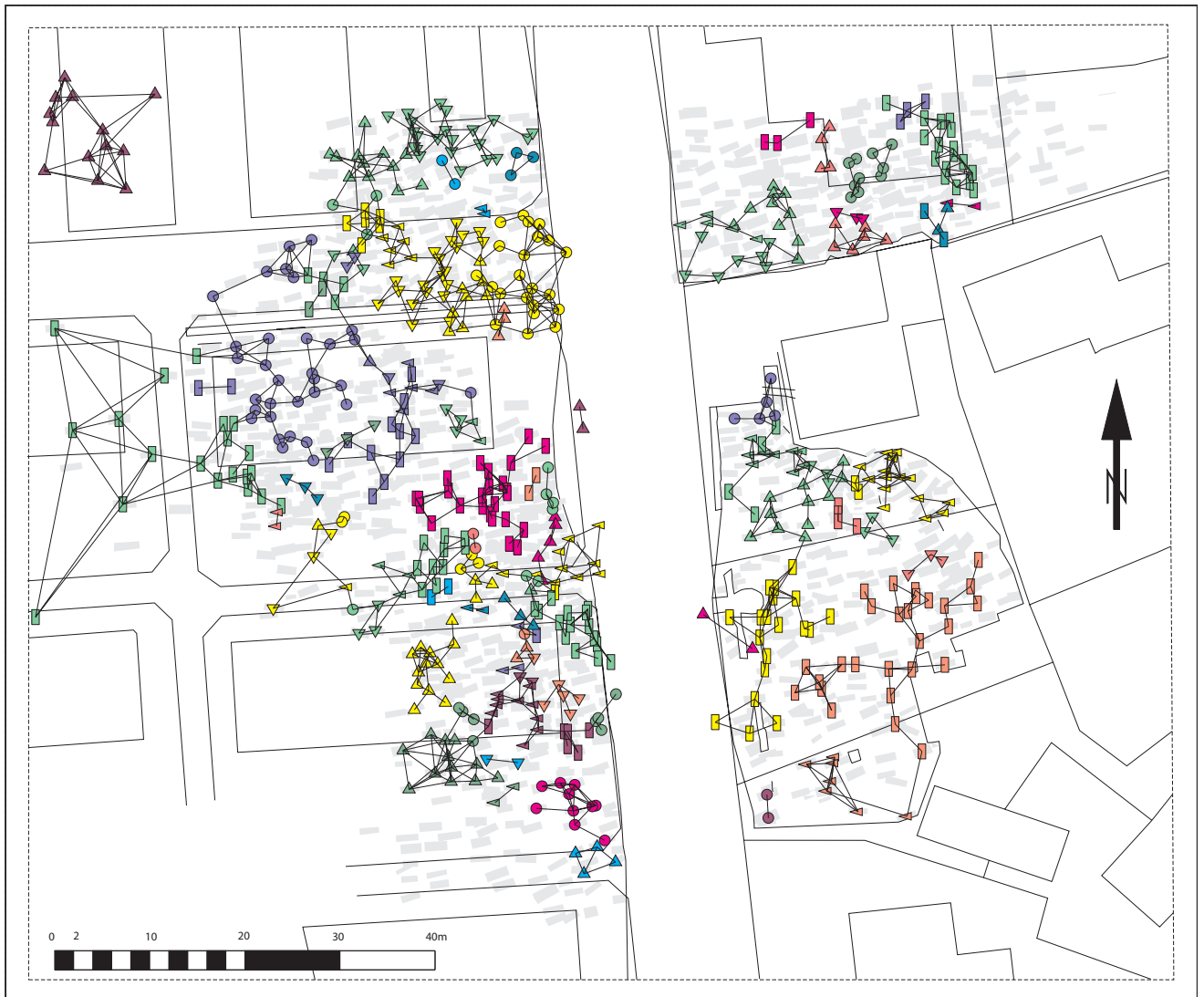


Tafel 11, ANN1-Netzdarstellung, frühbronzezeitliches Gräberfeld von Franzhausen I, NÖ.



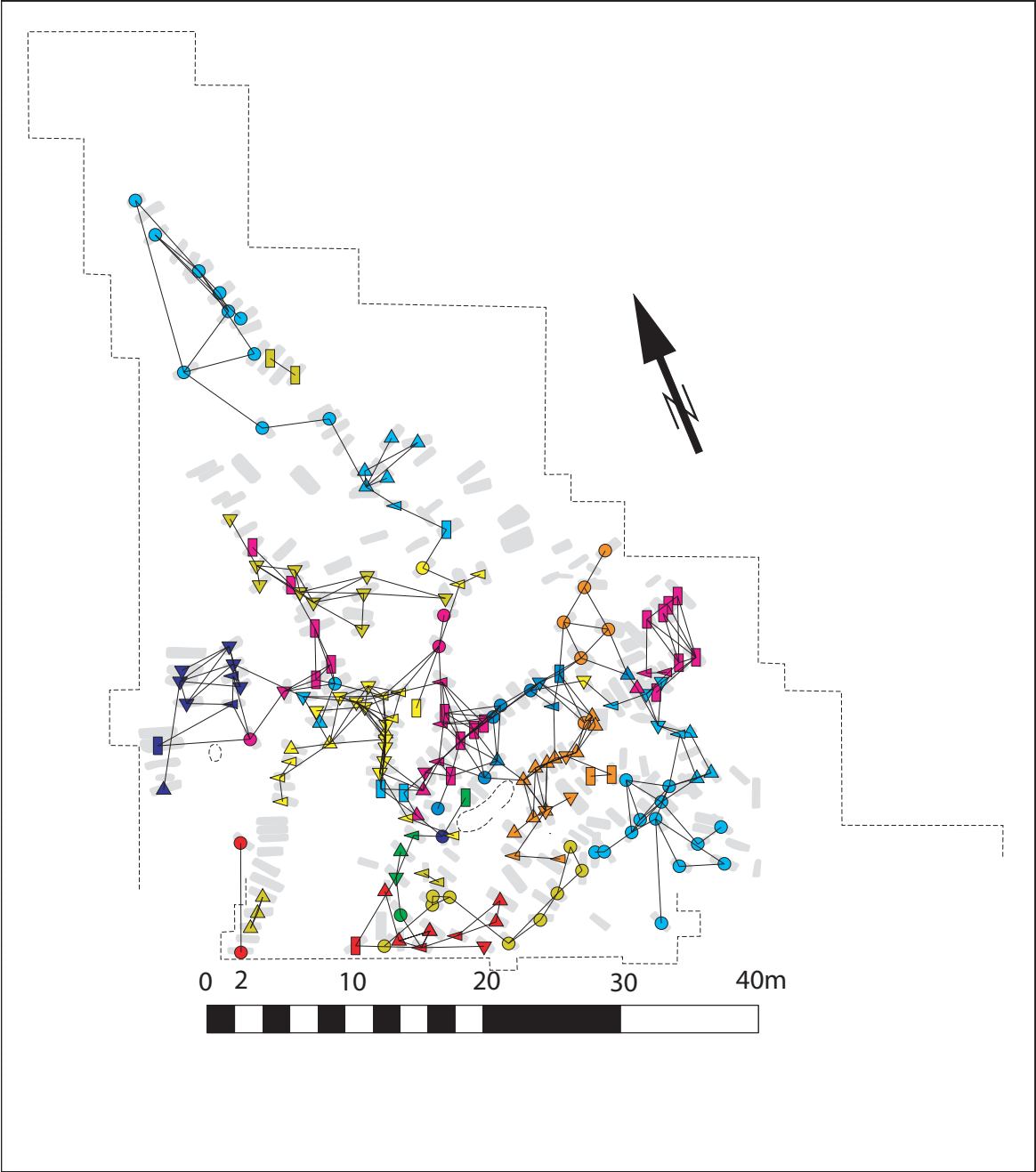
- | | | | | | | | | | |
|---------|---------|---------|---------|---------|---------|---------|---------|---------|---------|
| ● Clu01 | ● Clu06 | ● Clu11 | ● Clu16 | ● Clu21 | ● Clu26 | ● Clu31 | ● Clu36 | ● Clu41 | ● Clu46 |
| ▲ Clu02 | ▲ Clu07 | ▲ Clu12 | ▲ Clu17 | ▲ Clu22 | ▲ Clu27 | ▲ Clu32 | ▲ Clu37 | ▲ Clu42 | ▲ Clu47 |
| ▼ Clu03 | ▼ Clu08 | ▼ Clu13 | ▼ Clu18 | ▼ Clu23 | ▼ Clu28 | ▼ Clu33 | ▼ Clu38 | ▼ Clu43 | ▼ Clu48 |
| ◀ Clu04 | ◀ Clu09 | ◀ Clu14 | ◀ Clu19 | ◀ Clu24 | ◀ Clu29 | ◀ Clu34 | ◀ Clu39 | ◀ Clu44 | ◀ Clu49 |
| ■ Clu05 | ■ Clu10 | ■ Clu15 | ■ Clu20 | ■ Clu25 | ■ Clu30 | ■ Clu35 | ■ Clu40 | ■ Clu45 | ■ Clu50 |

Tafel 12, ANN1-Netzdarstellung, merowingisches Gräberfeld von Altenerding, Bayern.



- | | | | | | | | | | |
|---------|---------|---------|---------|---------|---------|---------|---------|---------|---------|
| ● Clu01 | ● Clu06 | ● Clu11 | ● Clu16 | ● Clu21 | ● Clu26 | ● Clu31 | ● Clu36 | ● Clu41 | ● Clu46 |
| ▲ Clu02 | ▲ Clu07 | ▲ Clu12 | ▲ Clu17 | ▲ Clu22 | ▲ Clu27 | ▲ Clu32 | ▲ Clu37 | ▲ Clu42 | ▲ Clu47 |
| ▼ Clu03 | ▼ Clu08 | ▼ Clu13 | ▼ Clu18 | ▼ Clu23 | ▼ Clu28 | ▼ Clu33 | ▼ Clu38 | ▼ Clu43 | ▼ Clu48 |
| ◀ Clu04 | ◀ Clu09 | ◀ Clu14 | ◀ Clu19 | ◀ Clu24 | ◀ Clu29 | ◀ Clu34 | ◀ Clu39 | ◀ Clu44 | ◀ Clu49 |
| ■ Clu05 | ■ Clu10 | ■ Clu15 | ■ Clu20 | ■ Clu25 | ■ Clu30 | ■ Clu35 | ■ Clu40 | ■ Clu45 | ■ Clu50 |

Tafel 13, ANN1-Netzdarstellung, Lomovatovo-zeitliches Gräberfeld von Nevolino, Russland.



- | | | | | | | | | | |
|---------|---------|---------|---------|---------|---------|---------|---------|---------|---------|
| ● Clu01 | ● Clu06 | ● Clu11 | ● Clu16 | ● Clu21 | ● Clu26 | ● Clu31 | ● Clu36 | ● Clu41 | ● Clu46 |
| ▲ Clu02 | ▲ Clu07 | ▲ Clu12 | ▲ Clu17 | ▲ Clu22 | ▲ Clu27 | ▲ Clu32 | ▲ Clu37 | ▲ Clu42 | ▲ Clu47 |
| ▼ Clu03 | ▼ Clu08 | ▼ Clu13 | ▼ Clu18 | ▼ Clu23 | ▼ Clu28 | ▼ Clu33 | ▼ Clu38 | ▼ Clu43 | ▼ Clu48 |
| ◀ Clu04 | ◀ Clu09 | ◀ Clu14 | ◀ Clu19 | ◀ Clu24 | ◀ Clu29 | ◀ Clu34 | ◀ Clu39 | ◀ Clu44 | ◀ Clu49 |
| ■ Clu05 | ■ Clu10 | ■ Clu15 | ■ Clu20 | ■ Clu25 | ■ Clu30 | ■ Clu35 | ■ Clu40 | ■ Clu45 | ■ Clu50 |

Tafel 14, Kartierung zweier Merkmale, ältestlinearbandkeramische Siedlung Brunn am Gebirge, Wolfholz, NÖ.



Fingertupfenleiste00010 : Fingertupfenleiste/mit Knubben/am größten Bauchdurchmesser/
 N= 23 [30], wirklicher M.w.= 0.93, erwarteter M.w.= 0.39, Differenz= 0.54, Konfidenzniveau=100.0%

▲=1x, ▲=2x, ▲=3x, ▲=4x, ▲=5x

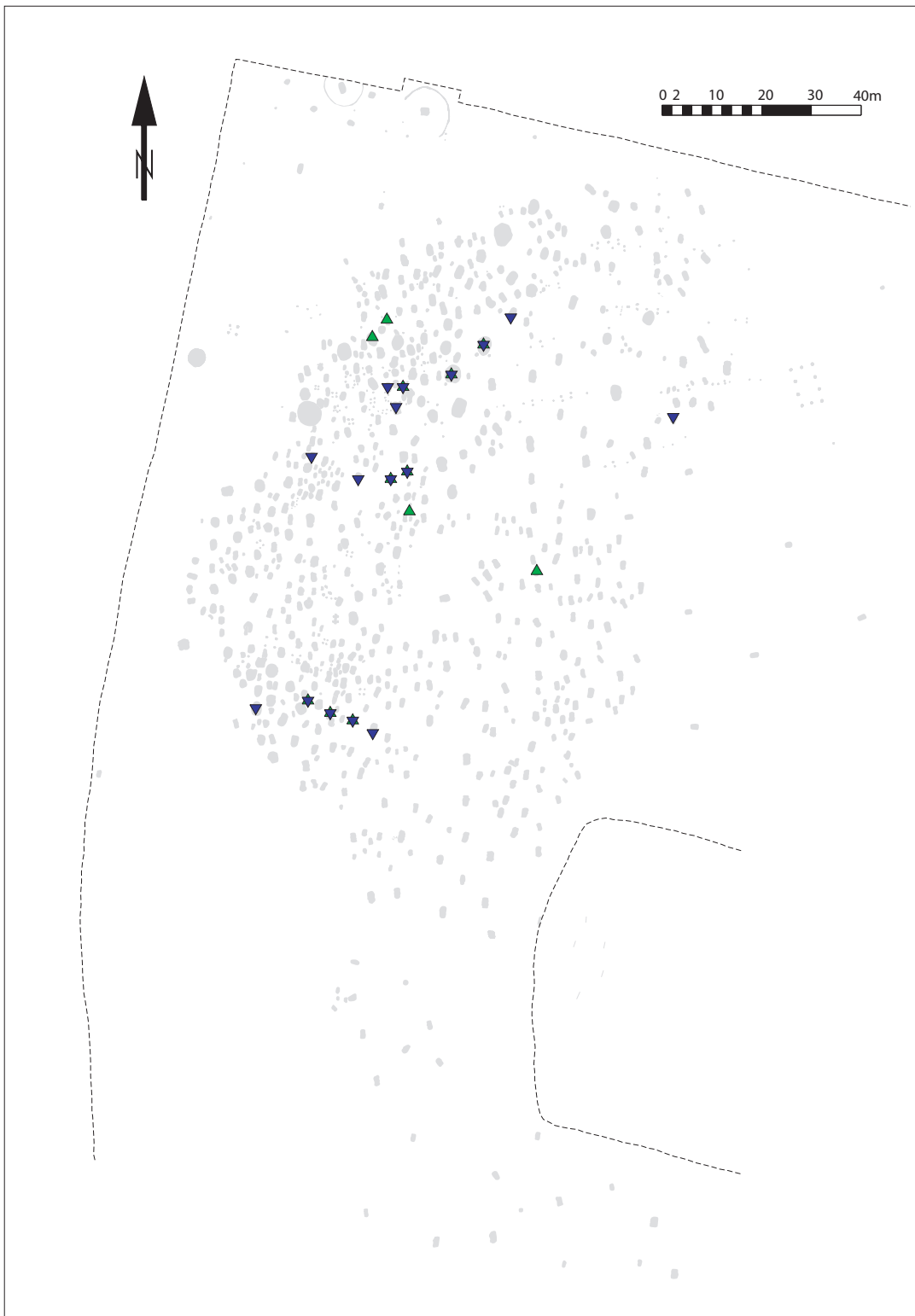
Boden00010

N= 38 [62], wirklicher M.w.= 0.44, erwarteter M.w.= 0.24, Differenz= 0.20, Konfidenzniveau=100.0%

▼=1x, ▼=2x, ▼=3x, ▼=4x, ▼=5x, ▼=6x

Tafel 15, Kartierung zweier Merkmale, frühbronzezeitliches Gräberfeld von Franzhausen I, NÖ.

aktuelle Parameter:NextNeiN=25 KonfNivN=3 NextNeiC=25 KonfNivC=3 Normkoo=0 ReciComp=On ComblnFi=4 Frequ=Off



Beinschmuck00110 : Diverser Schmuck/Beinschmuck/Scheibe/trapezförmiger Qu/Lochung/weit/
N= 12, wirklicher M.w.= 1.92, erwarteter M.w.= 0.53, Differenz= 1.38, Konfidenzniveau=100.0%

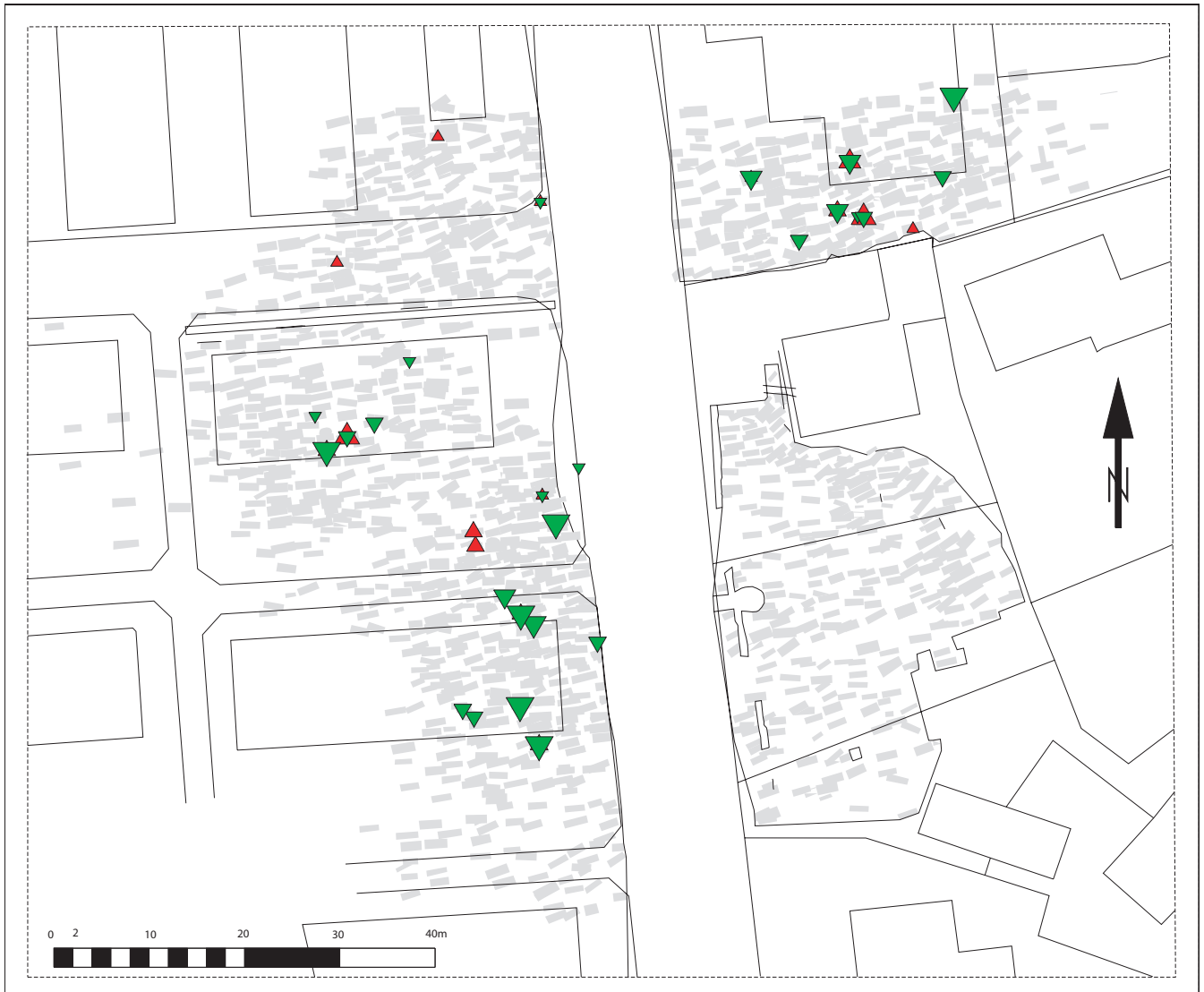
▲=1x

Beinschmuck00100: Diverser Schmuck/Beinschmuck/Scheibe/trapezförmiger Qu/Lochung/mittel/
N= 16, wirklicher M.w.= 1.50, erwarteter M.w.= 0.40, Differenz= 1.10, Konfidenzniveau=100.0%

▼=1x

Tafel 16, Kartierung zweier Merkmale, merowingisches Gräberfeld von Altenerding, Bayern.

aktuelle Parameter:NextNeiN=30 KonfNivN=3 NextNeiC=30 KonfNivC=3 Normkooor=0 ReciComp=On ComblnFi=4 Frequ=On



Gürtel0039 : Gürtel/HRB/Eisen/Hakenförmig/Beschl03/

N= 15 [29], wirklicher M.w.= 2.00, erwarteter M.w.= 0.53, Differenz= 1.47, Konfidenzniveau=100.0%

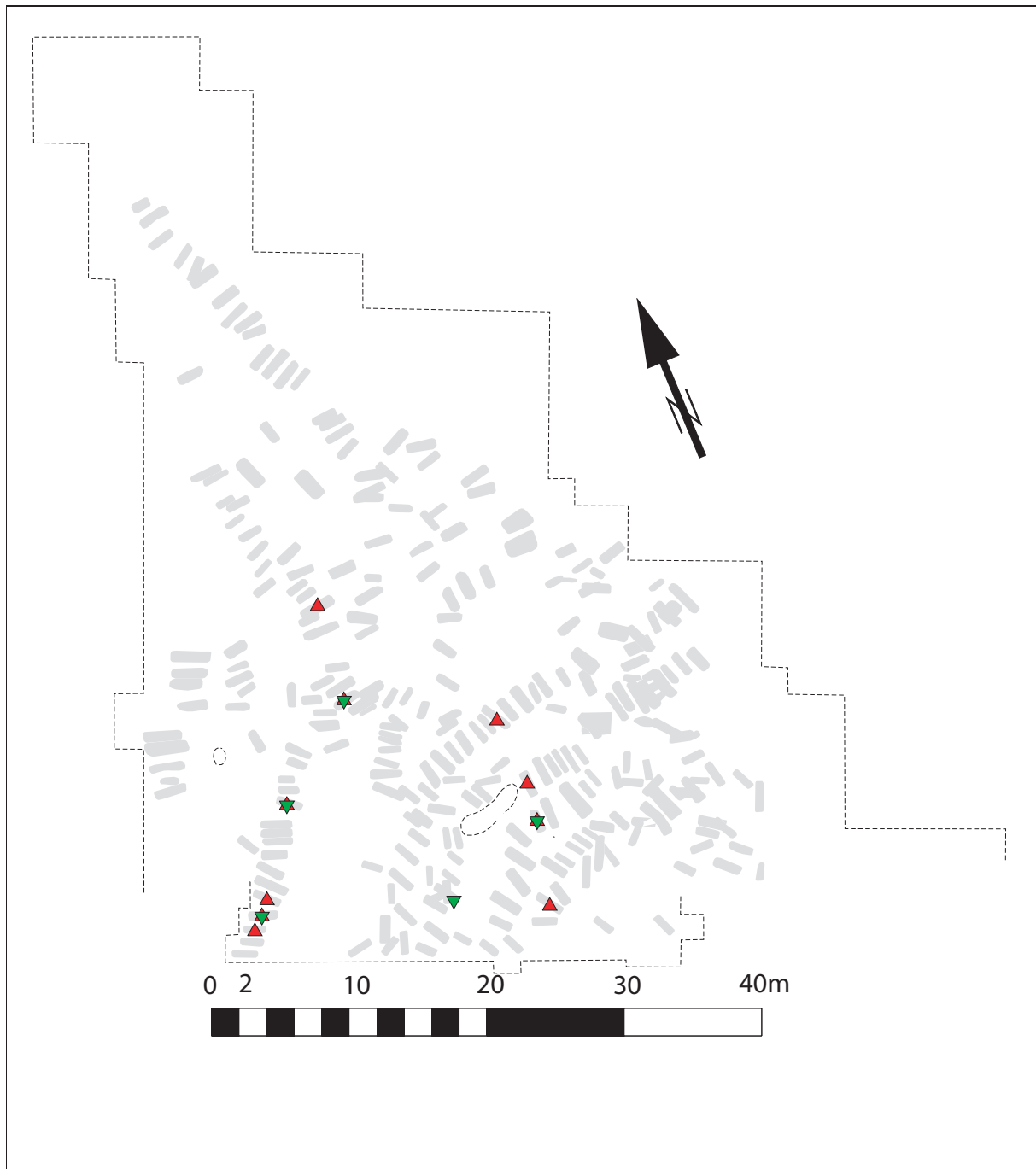
▲=1x, ▲=2x, ▲=3x, ▲=4x

Gürtel0030: Gürtel/HRB/Eisen/Beschl05/

N= 25 [68], wirklicher M.w.= 0.97, erwarteter M.w.= 0.32, Differenz= 0.65, Konfidenzniveau=100.0%

▼=1x, ▼=2x, ▼=3x, ▼=4x, ▼=5x

Tafel 17, Kartierung zweier Merkmale, Lomovotovo-zeitliches Gräberfeld von Nevolino, Russland.



Besc04b : ähnlichawie 04

N= 10 [10], wirklicher M.w.= 1.50, erwarteter M.w.= 0.56, Differenz= 0.94, Konfidenzniveau=100.0%

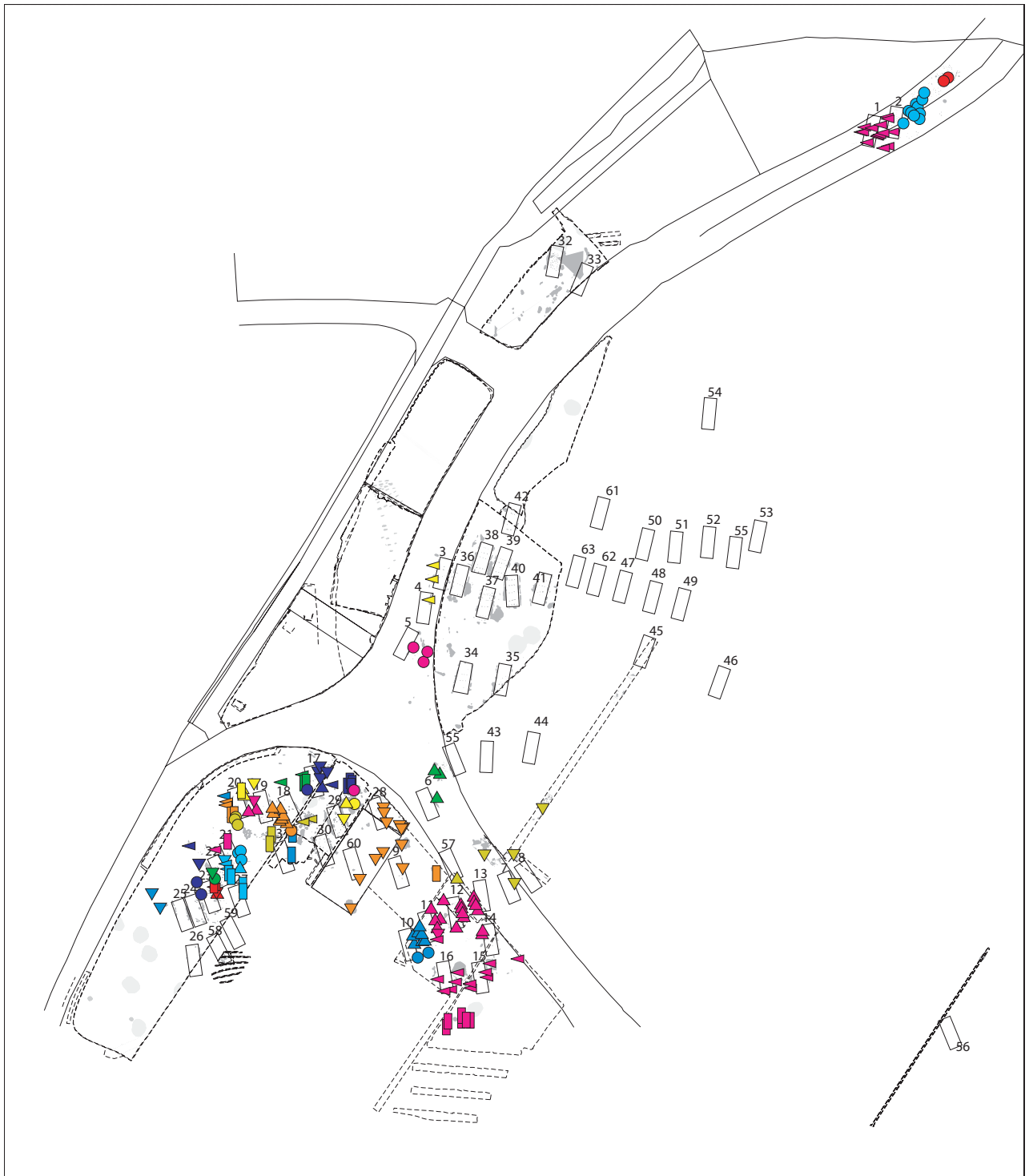
▲=1x

Anhä09a

N= 5 [5], wirklicher M.w.= 2.40, erwarteter M.w.= 1.13, Differenz= 1.27, Konfidenzniveau=100.0%

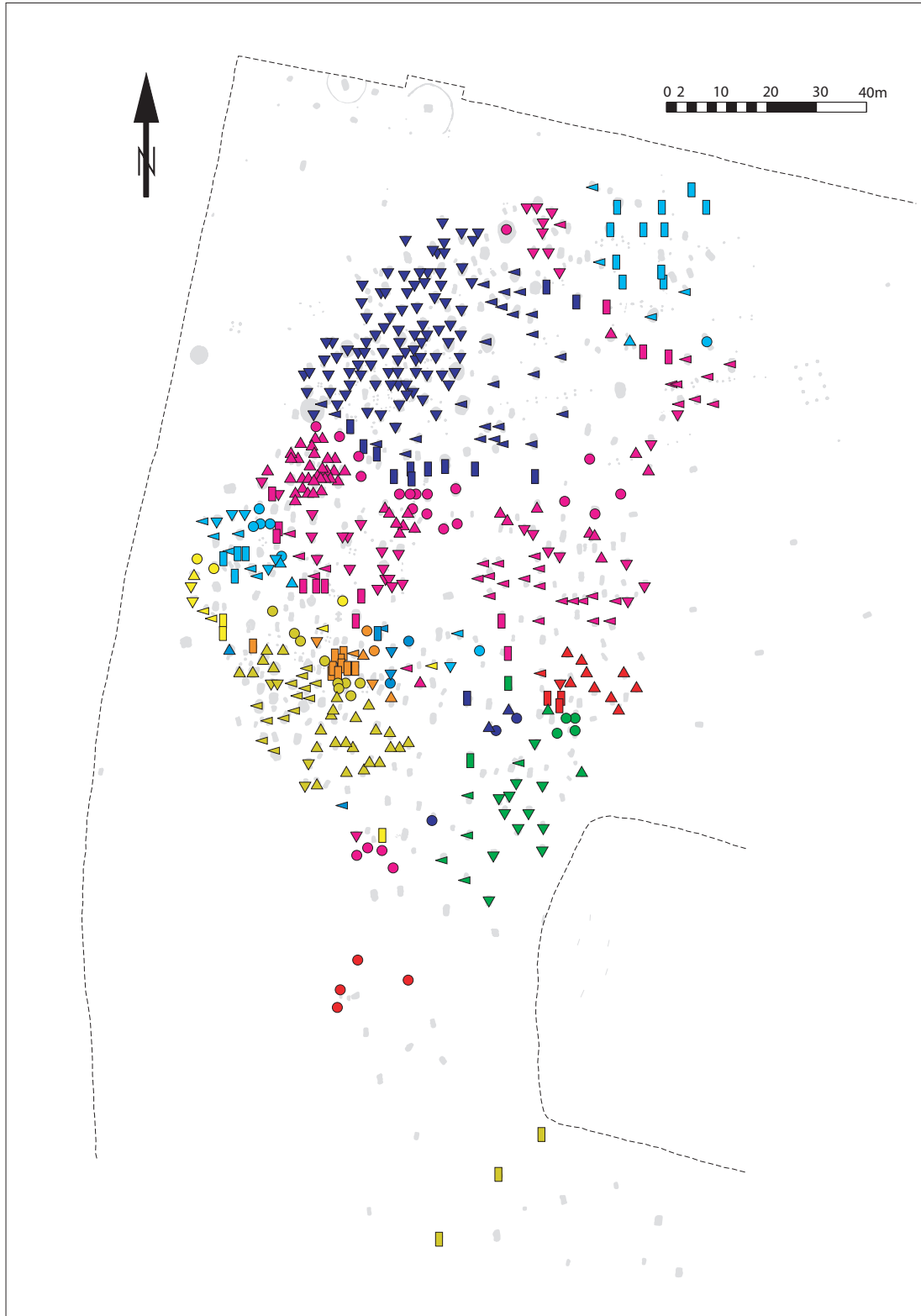
▼=1x

Tafel 18, ANN2, ältestlinearbandkeramische Siedlung Brunn am Gebirge, Wolfholz, NÖ.



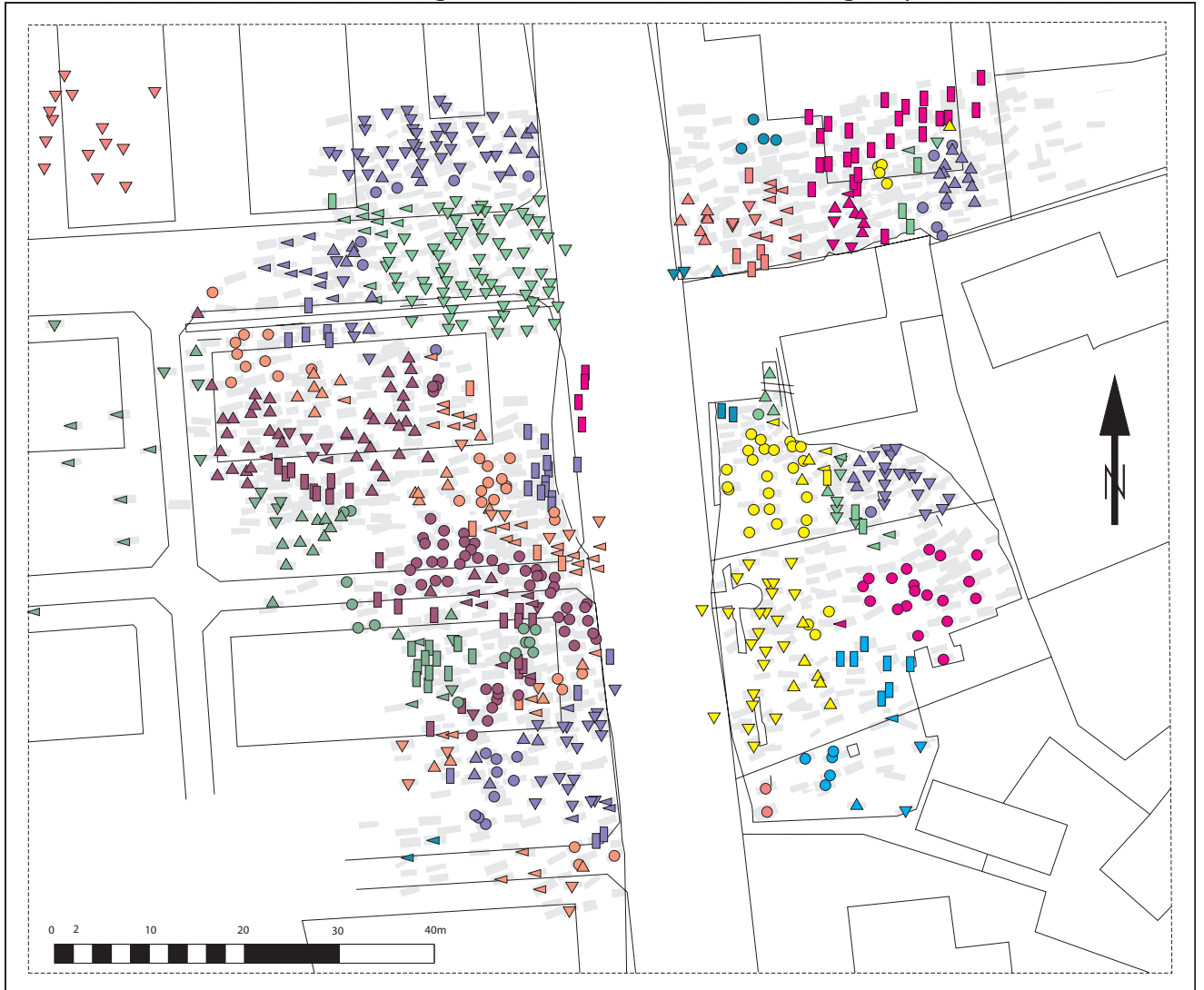
- Clu01 ● Clu06 ● Clu11 ● Clu16 ● Clu21 ● Clu26 ● Clu31 ● Clu36 ● Clu41 ● Clu46
- ▲ Clu02 ▲ Clu07 ▲ Clu12 ▲ Clu17 ▲ Clu22 ▲ Clu27 ▲ Clu32 ▲ Clu37 ▲ Clu42 ▲ Clu47
- ▼ Clu03 ▼ Clu08 ▼ Clu13 ▼ Clu18 ▼ Clu23 ▼ Clu28 ▼ Clu33 ▼ Clu38 ▼ Clu43 ▼ Clu48
- ◄ Clu04 ◄ Clu09 ◄ Clu14 ◄ Clu19 ◄ Clu24 ◄ Clu29 ◄ Clu34 ◄ Clu39 ◄ Clu44 ◄ Clu49
- Clu05 ■ Clu10 ■ Clu15 ■ Clu20 ■ Clu25 ■ Clu30 ■ Clu35 ■ Clu40 ■ Clu45 ■ Clu50

Tafel 19, ANN2, frühbronzezeitliches Gräberfeld von Franzhausen I, NÖ.



- | | | | | | | | | | |
|---------|---------|---------|---------|---------|---------|---------|---------|---------|---------|
| ● Clu01 | ● Clu06 | ● Clu11 | ● Clu16 | ● Clu21 | ● Clu26 | ● Clu31 | ● Clu36 | ● Clu41 | ● Clu46 |
| ▲ Clu02 | ▲ Clu07 | ▲ Clu12 | ▲ Clu17 | ▲ Clu22 | ▲ Clu27 | ▲ Clu32 | ▲ Clu37 | ▲ Clu42 | ▲ Clu47 |
| ▼ Clu03 | ▼ Clu08 | ▼ Clu13 | ▼ Clu18 | ▼ Clu23 | ▼ Clu28 | ▼ Clu33 | ▼ Clu38 | ▼ Clu43 | ▼ Clu48 |
| ◀ Clu04 | ◀ Clu09 | ◀ Clu14 | ◀ Clu19 | ◀ Clu24 | ◀ Clu29 | ◀ Clu34 | ◀ Clu39 | ◀ Clu44 | ◀ Clu49 |
| ■ Clu05 | ■ Clu10 | ■ Clu15 | ■ Clu20 | ■ Clu25 | ■ Clu30 | ■ Clu35 | ■ Clu40 | ■ Clu45 | ■ Clu50 |

Tafel 20, ANN2, merowingisches Gräberfeld von Altenerding, Bayern.



- | | | | | | | | | | |
|---------|---------|---------|---------|---------|---------|---------|---------|---------|---------|
| ● Clu01 | ● Clu06 | ● Clu11 | ● Clu16 | ● Clu21 | ● Clu26 | ● Clu31 | ● Clu36 | ● Clu41 | ● Clu46 |
| ▲ Clu02 | ▲ Clu07 | ▲ Clu12 | ▲ Clu17 | ▲ Clu22 | ▲ Clu27 | ▲ Clu32 | ▲ Clu37 | ▲ Clu42 | ▲ Clu47 |
| ▼ Clu03 | ▼ Clu08 | ▼ Clu13 | ▼ Clu18 | ▼ Clu23 | ▼ Clu28 | ▼ Clu33 | ▼ Clu38 | ▼ Clu43 | ▼ Clu48 |
| ◀ Clu04 | ◀ Clu09 | ◀ Clu14 | ◀ Clu19 | ◀ Clu24 | ◀ Clu29 | ◀ Clu34 | ◀ Clu39 | ◀ Clu44 | ◀ Clu49 |
| ■ Clu05 | ■ Clu10 | ■ Clu15 | ■ Clu20 | ■ Clu25 | ■ Clu30 | ■ Clu35 | ■ Clu40 | ■ Clu45 | ■ Clu50 |