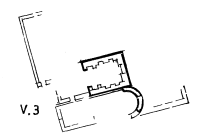
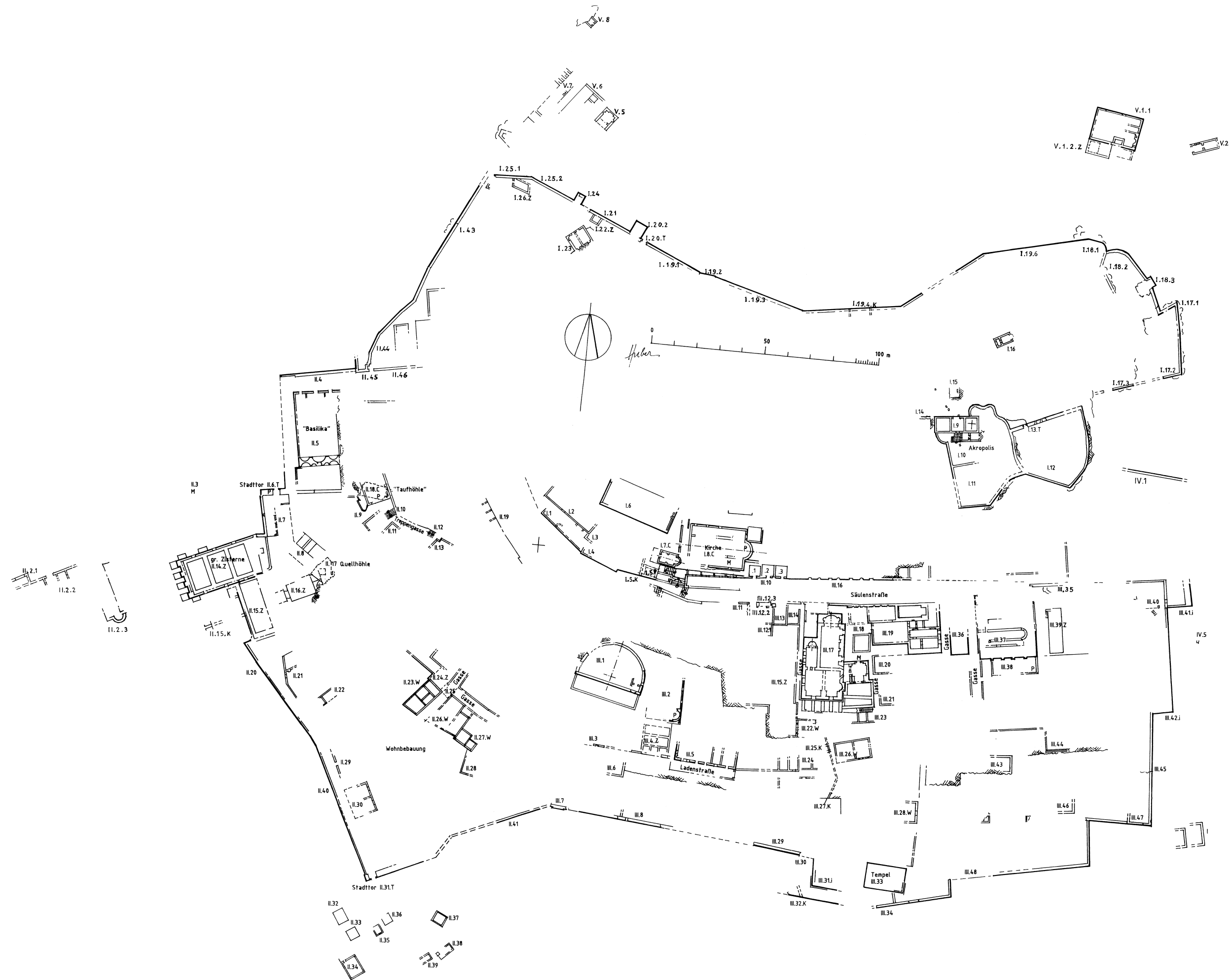
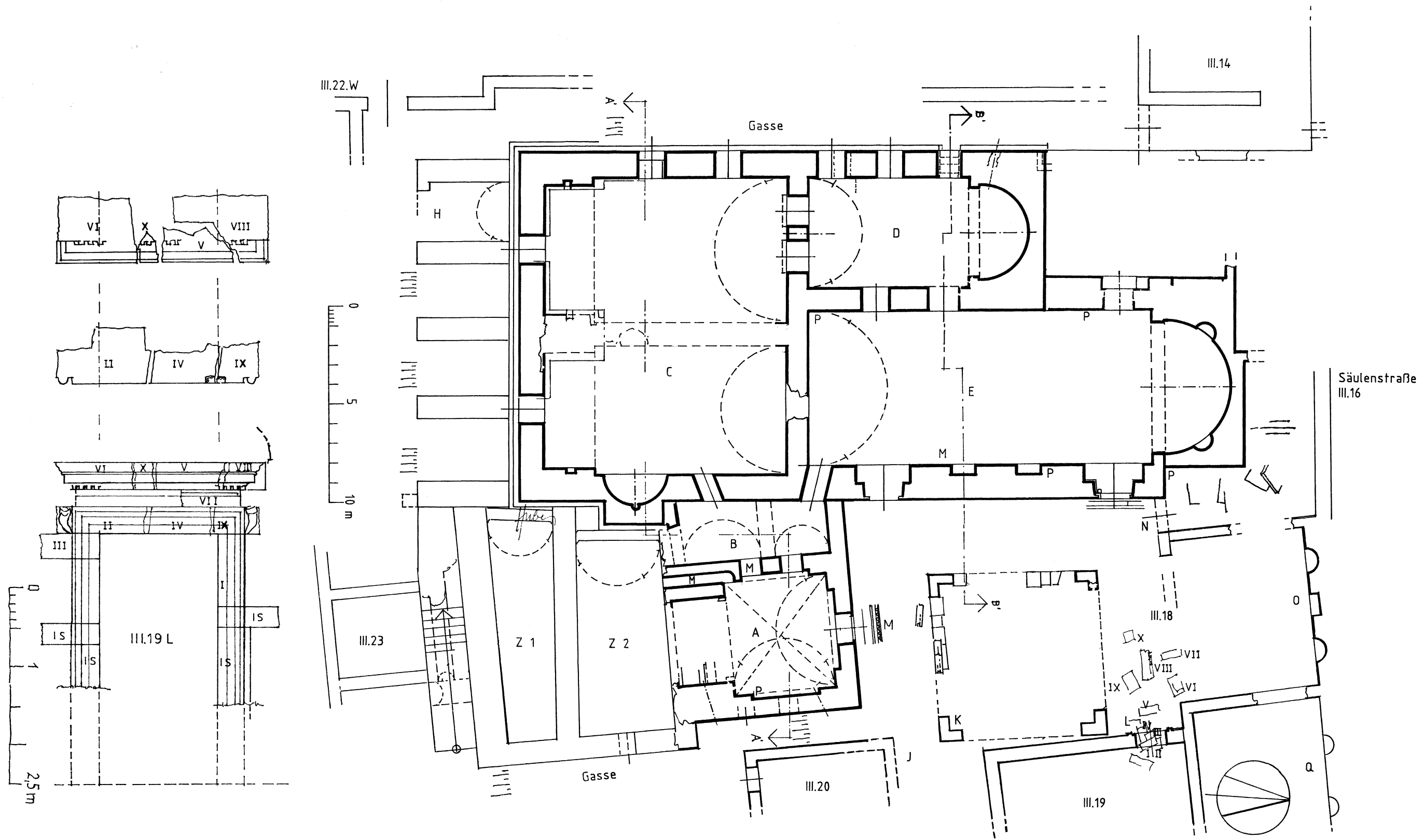


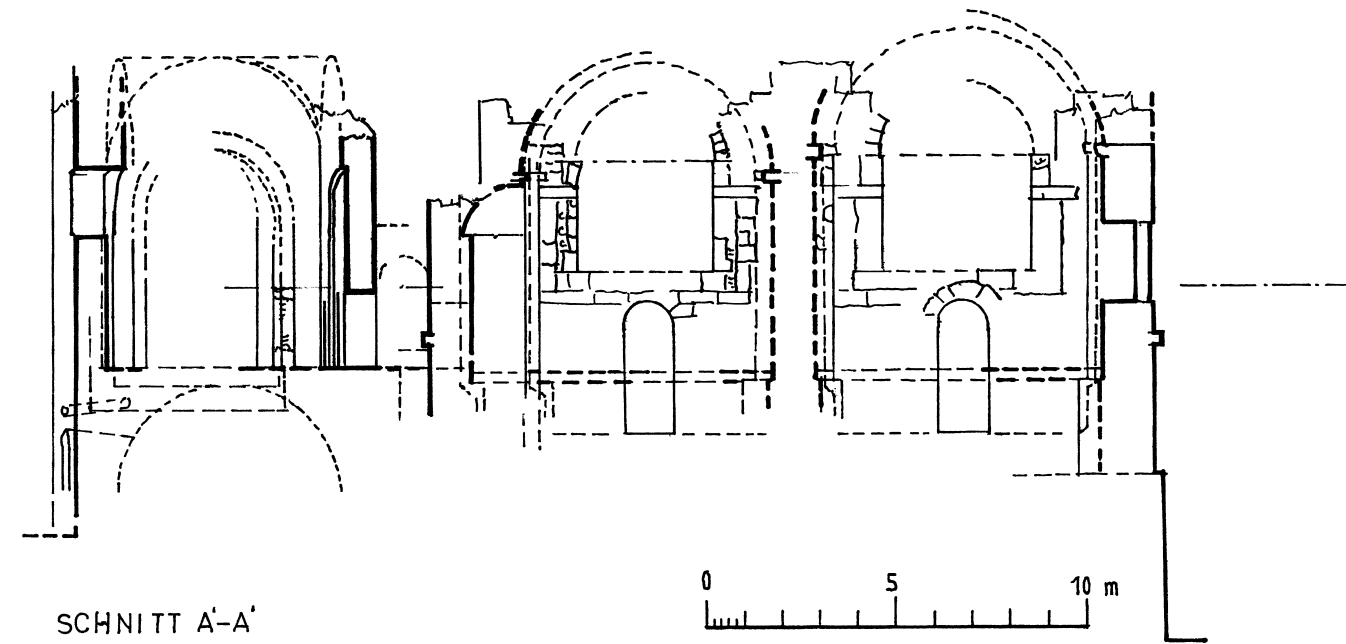
Plan 1: Syedra, Landkarte bzw. Lageplan, Fassung 2003



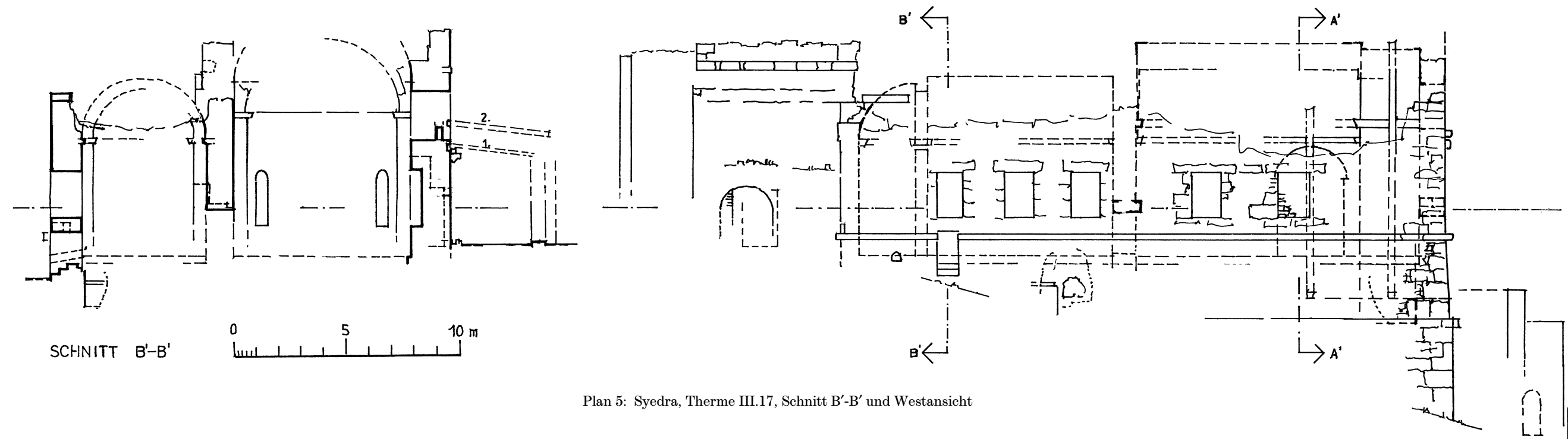
Plan 2: Syedra Oberstadt, Stadtplan, Fassung 2003



Plan 3: Syedra, Therme III.17 und Palaistra, Grundriß, mit Rekonstruktion des Tores III.19 L, Fassung 2003



Plan 4: Syedra, Therme III.17, Schnitt A'-A'



Plan 5: Syedra, Therme III.17, Schnitt B'-B' und Westansicht