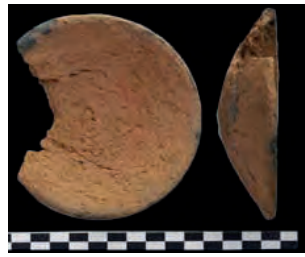




9443



9533U



4560



K3441.1



K10141.1



0913



8899



K3440.28



0496



K3440.36



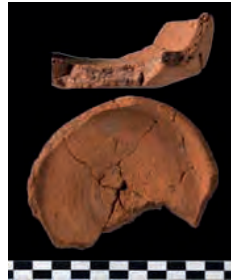
K12013.59



K12069.3



0104



9533E



9533V



K1275.1



9533D



90/20a,13



90/20a,14



K10118.25





K12094.10



90/20a,71



K3438.2



90/20a,42



K12115.1



K12078.4



K12069.2



90/20a,4



K12117.1



K12025.4



K12034.11



K12123.16



K12145.8



K12052.3

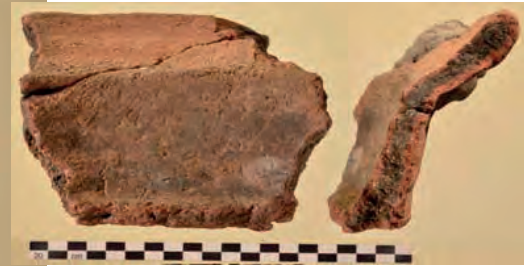


K12001.1





90/20a,1



90/20a,57



K12086.2



90/20a,72



9428Q



9428T



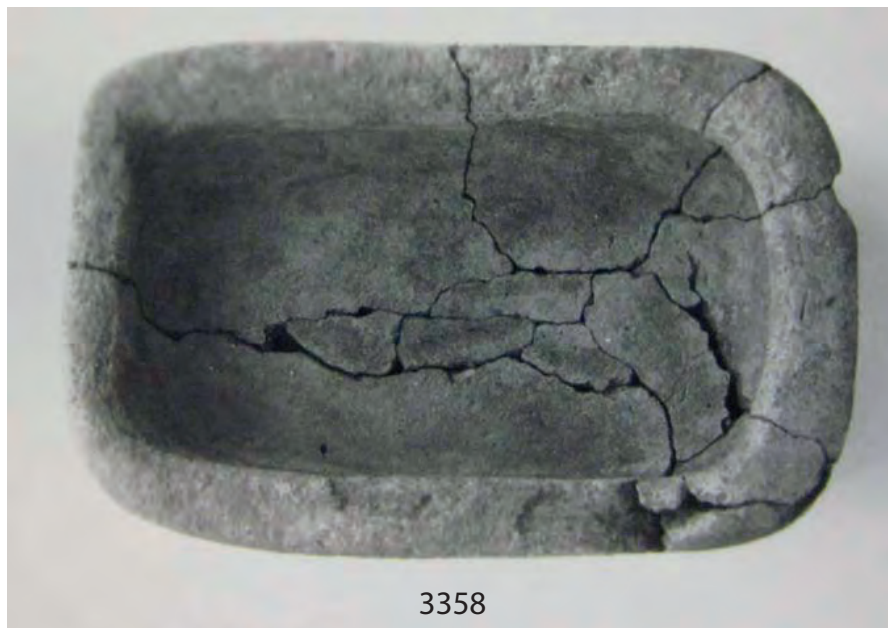
K12052.2



K10144.11



1 (4560); 2 (9430C); 3 (K12061.6); 4 (K12060.10); 5 (K10142.1); 6 (9533U); 7 (K10141.1); 8 (K12109.1); 9 (K12076.6); 10 (9443); 11 (K12147.2); 12 (K3441.1); 13 (K12069.1); 14 (K10208.1); 15 (K10119.35); 16 (K10118.7); 17 (K12012.2); 18 (K10115.41); 19 (K12013.54); 20 (K10126.20); 21 (K10207.3); 22 (0731); 23 (90/20a,21); 24 (K12013.53); 25 (1725); 26 (0913); 27 (8899)



3358



K4926.5



9430B



90/20a,59



0248



K3440.38



K2018.3



K10138.42

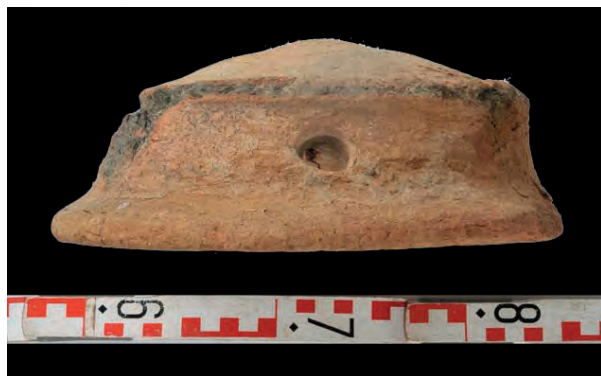


K1987.1



K12013.66

2684E



K8000.5



K12060.23



K3441.7



K12052.1





8559G



K3439.7



K12069.26



0730



0017



2010A



K12047.2



K10143.22



9533Y



4561



K3734.2





9550



9292



9551



9553



3378A



K12054.7



K10139.15



K12159.1



K12041.10



5667



9296

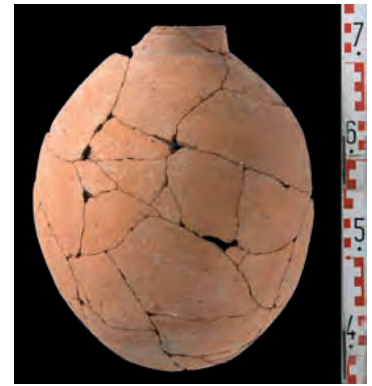
9296



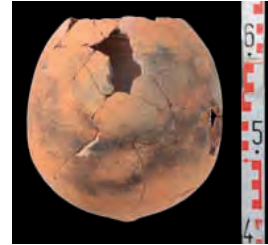
9445



8898



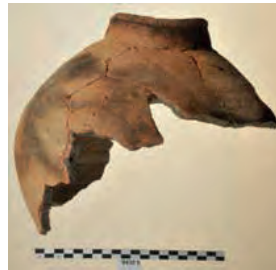
9533A



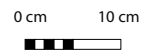
9533R



9533A



9430E



9430A



K12013.87



K12172.1



K10126.6



K10126.98



90/20a,34



K8000.8





7546B



9443C



5822



8322



K12054.14



8763



9293



K3734.1



4127H



K12001.2



K12077.11



K12054.6



K3445.6



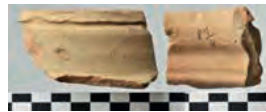
K3446.2



0109



3262B



K4197.1



K12074.5



K818.1



K10201.1



K4197.1



9587U



9587P



3382C





5928



K10123.8



2684C



3203A



7350L



K10132.1



K10204.4



K10141.23



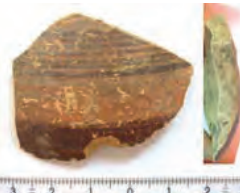
K10141.26



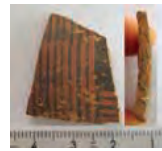
K12117.20



K10139.24



K10164.5



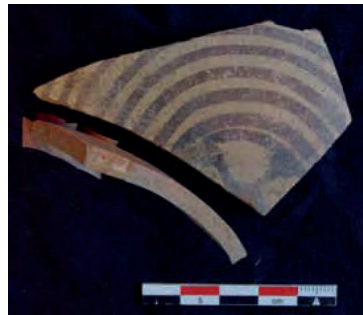
K12159.14



K10200.1



K10163.1



K8002.3



7255D



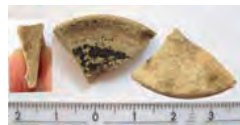
7254F+G



K12077.17



K12015.10



K12048.27



K8007.1



0473



K10141.35



K10185.1



7254D

0 cm

10 cm



K12077.6



4598



K12060 + K12076.49 + K12079.7 .32



90/20a,160



4127E



K12137.3



K8001.12



K12117.21



K3439.5



K3438.6



3445G



9533K

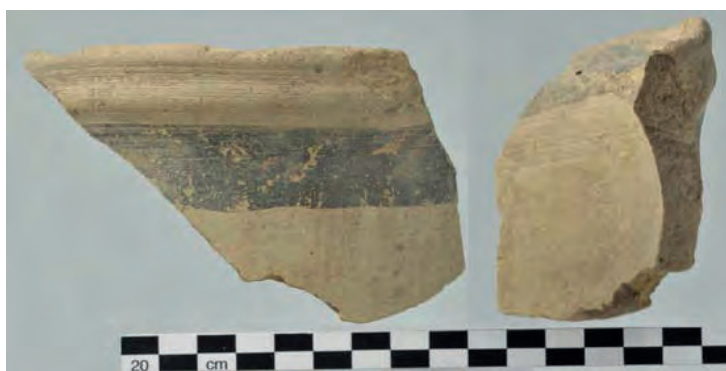


K3445.1





K12117.4



K4928.3



0019



0083

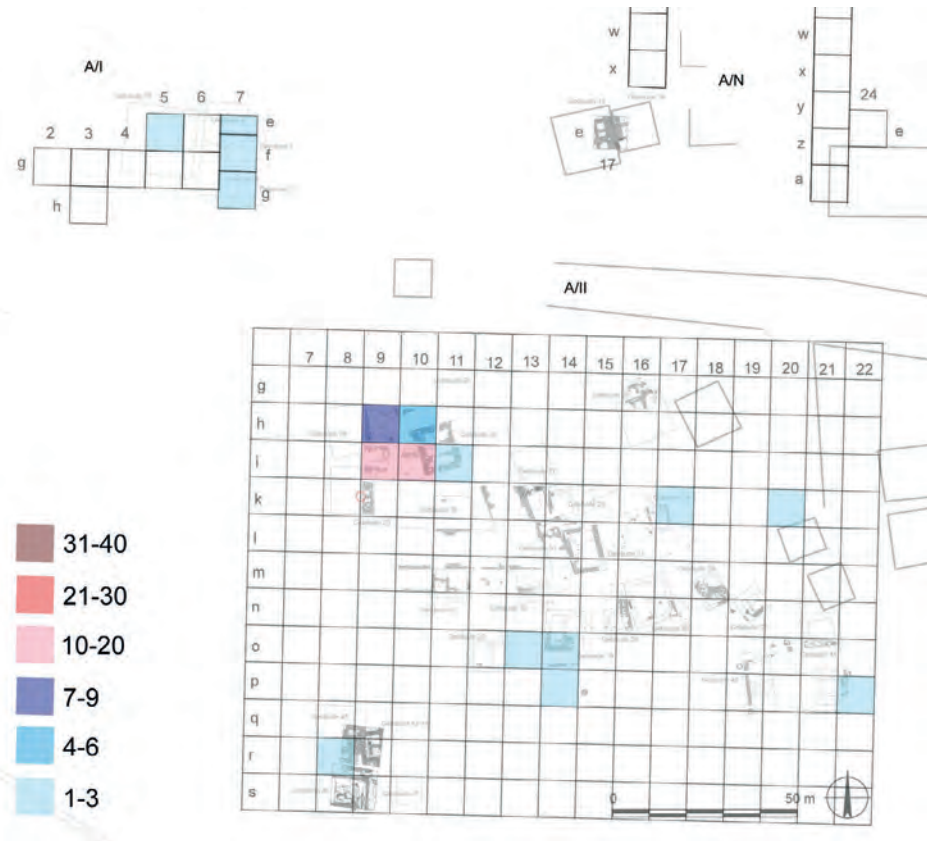


0019

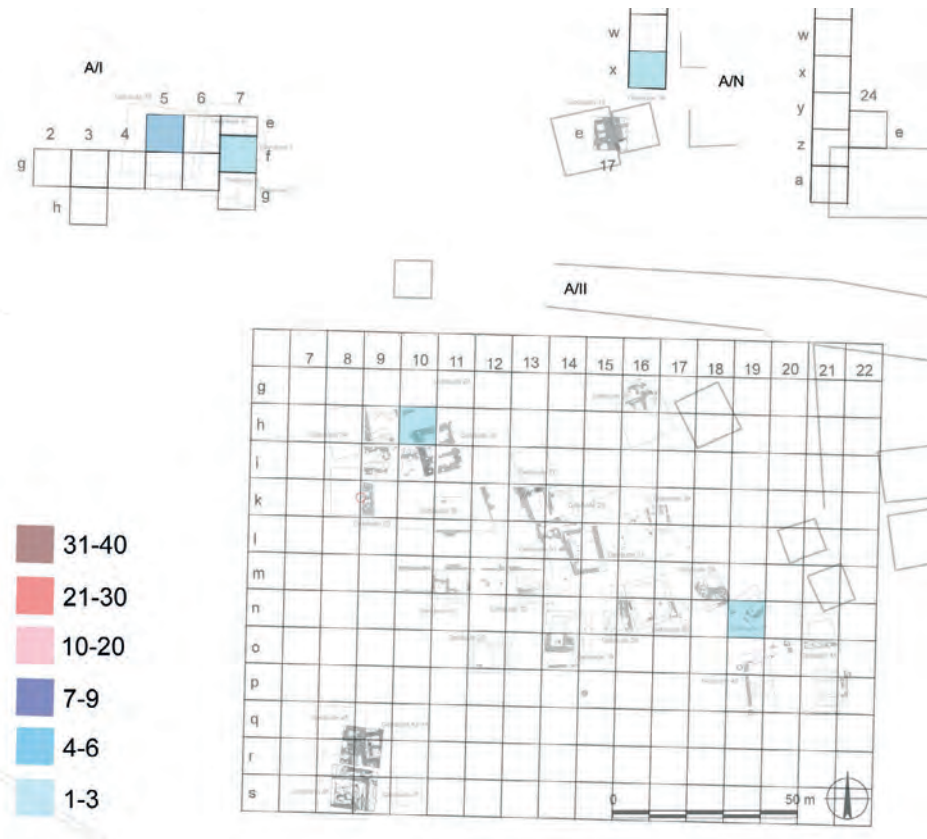


K12150.2

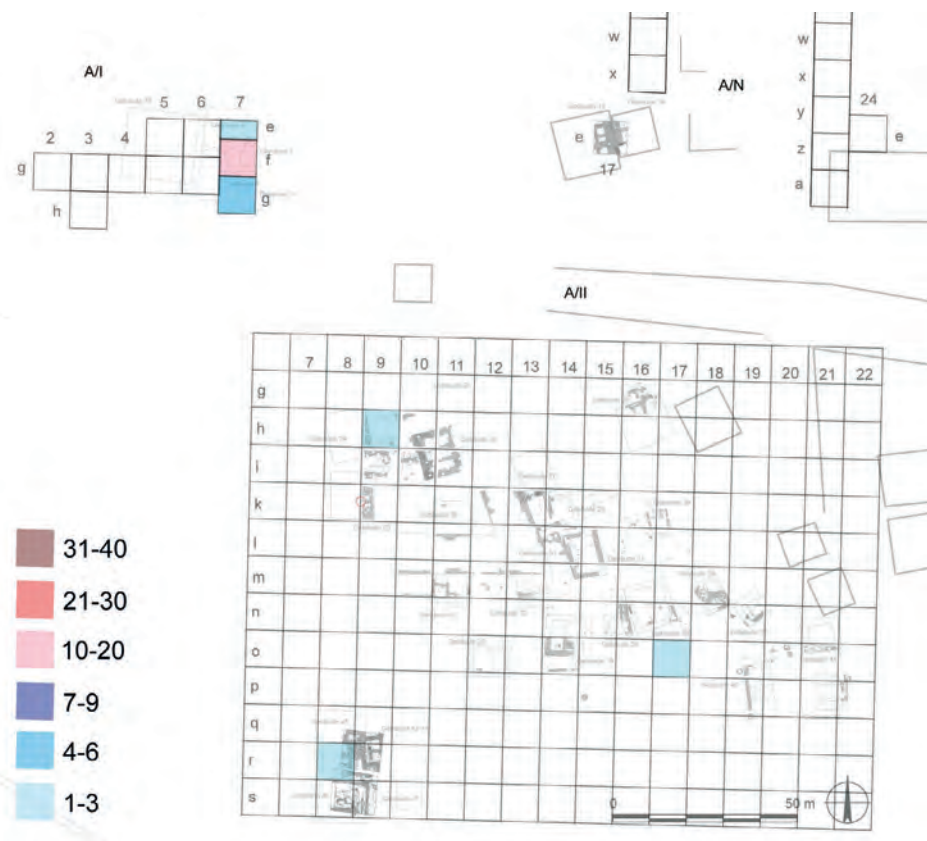




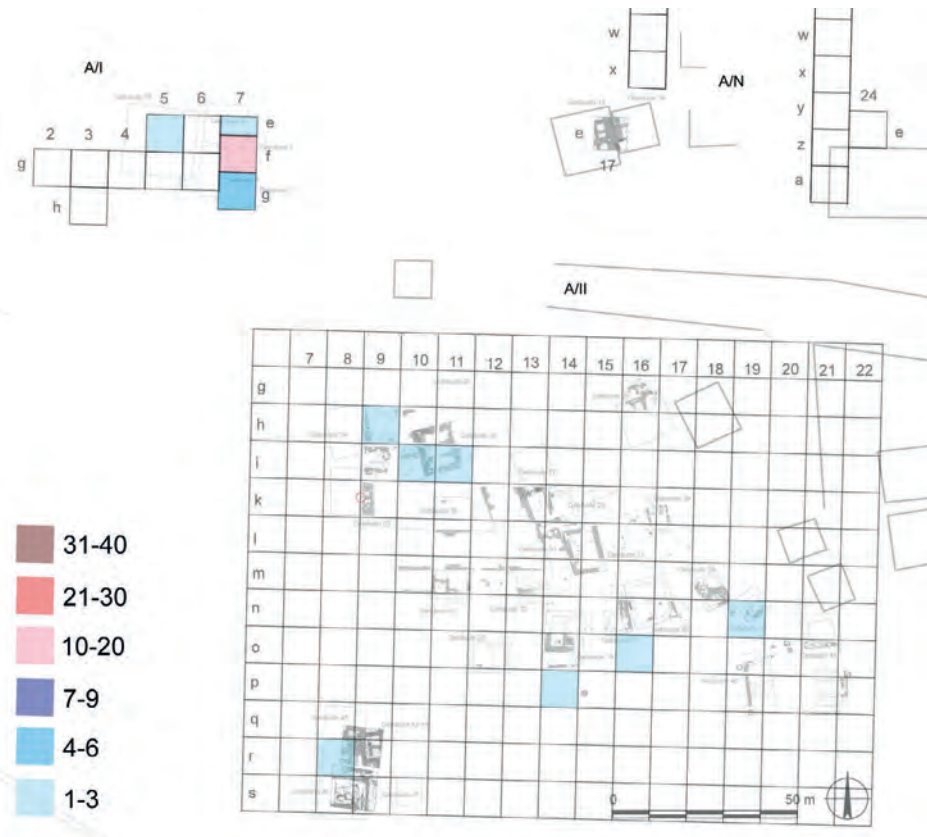
Tafel 336: Fundverteilung der Schalen A04



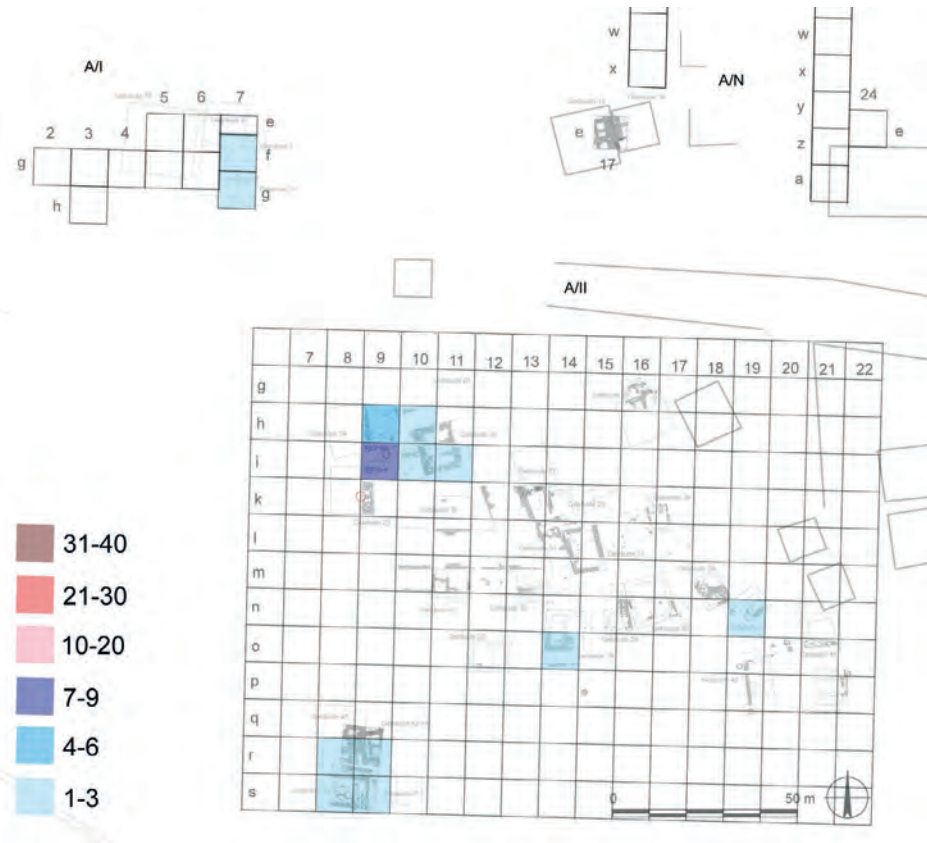
Tafel 337: Fundverteilung der Schalen A06



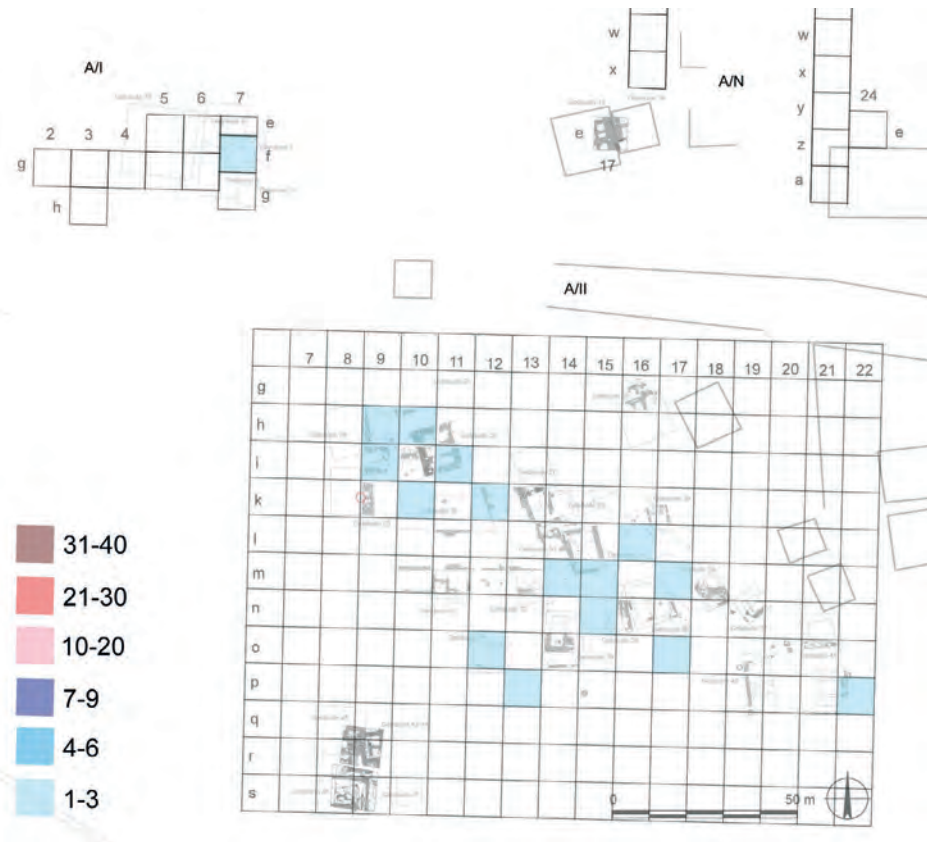
Tafel 338: Fundverteilung der Schalen mit umgeschlagenem Rand A19



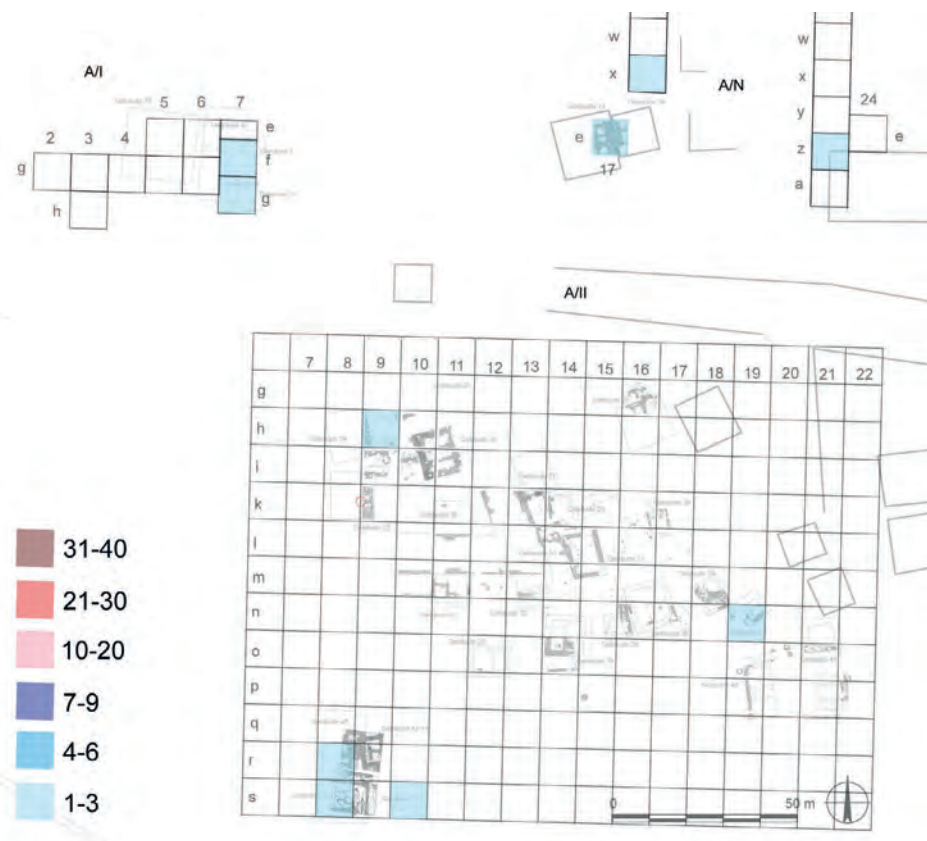
Tafel 339: Fundverteilung der trichterförmigen Schalen A28



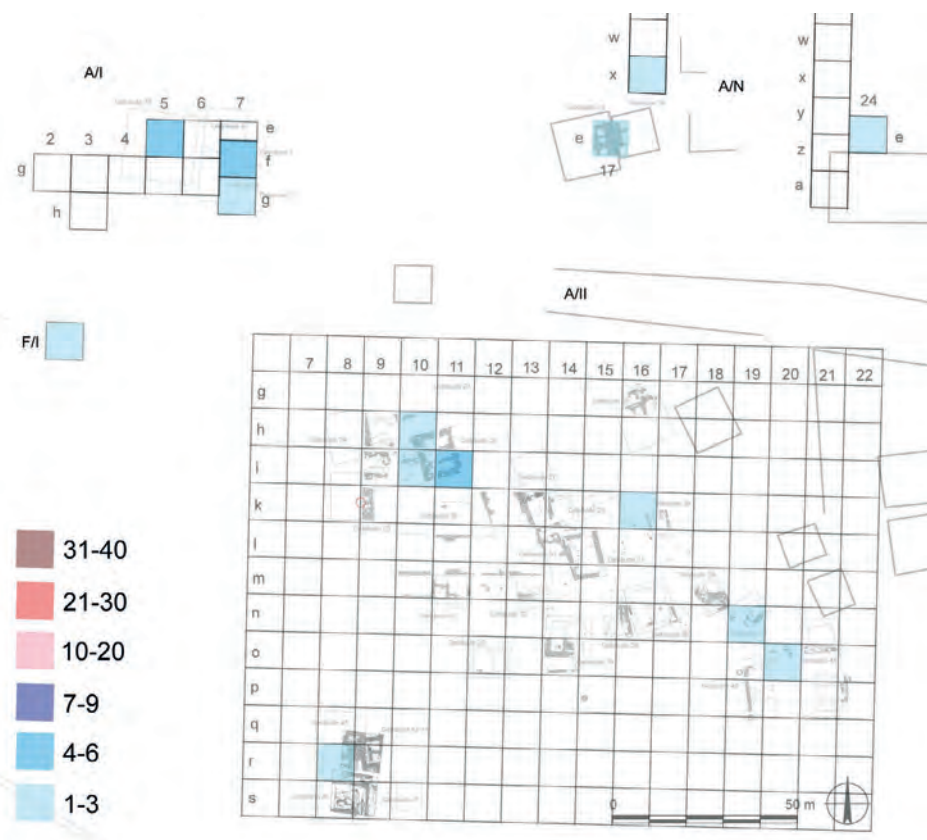
Tafel 340: Fundverteilung der Brotplatten A33



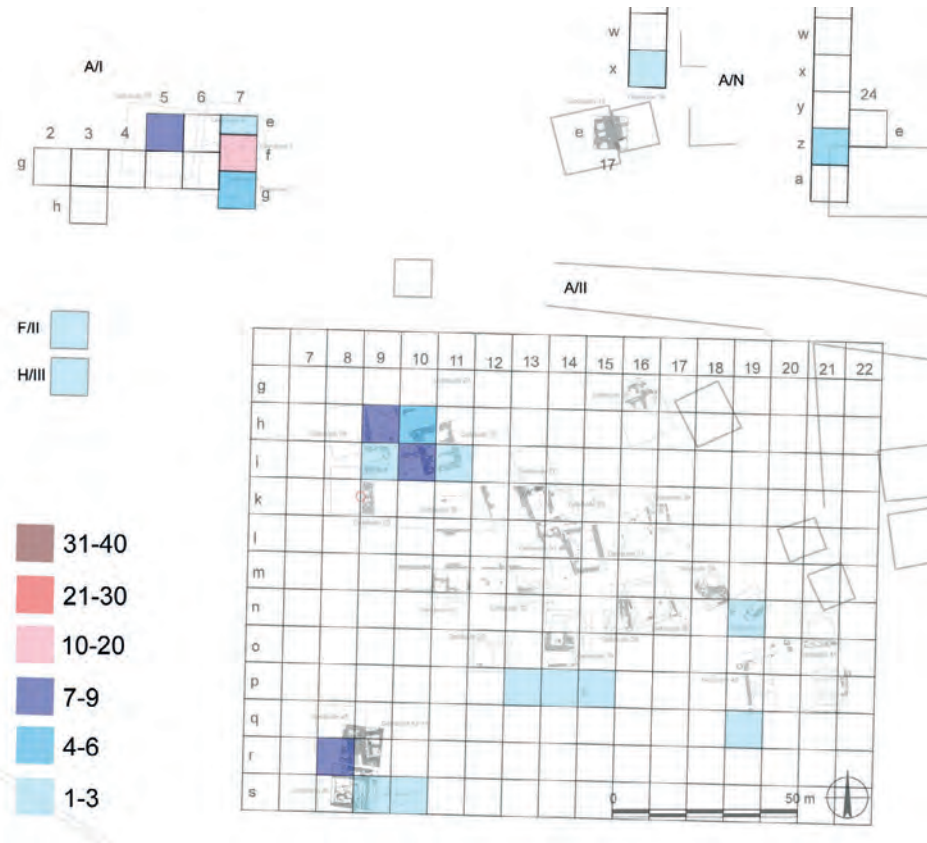
Tafel 341: Fundverteilung der Feuerböcke A39



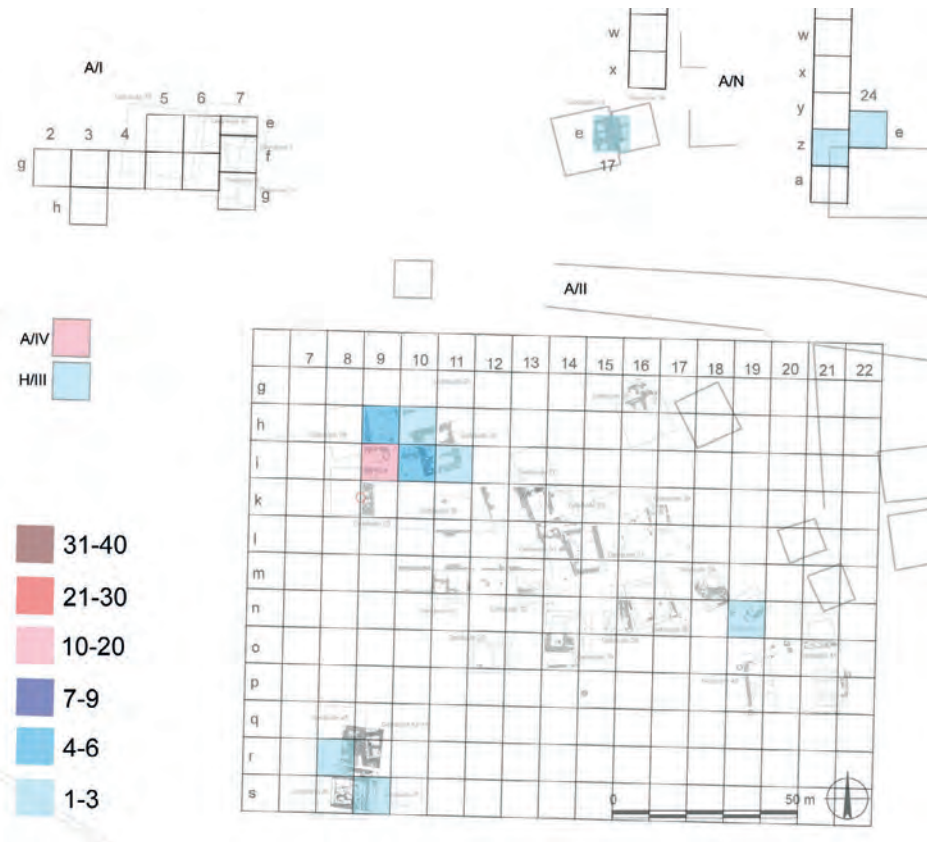
Tafel 342: Fundverteilung der Dreifußständer A38



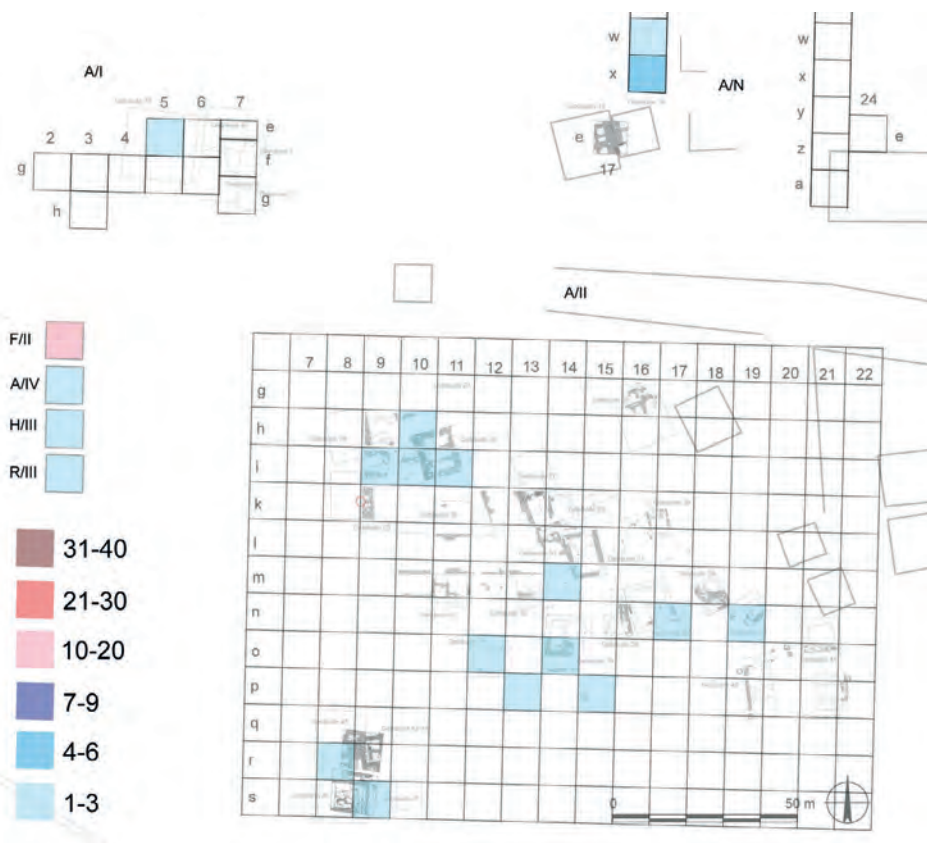
Tafel 343: Fundverteilung der Flaschen mit geradem Hals B10



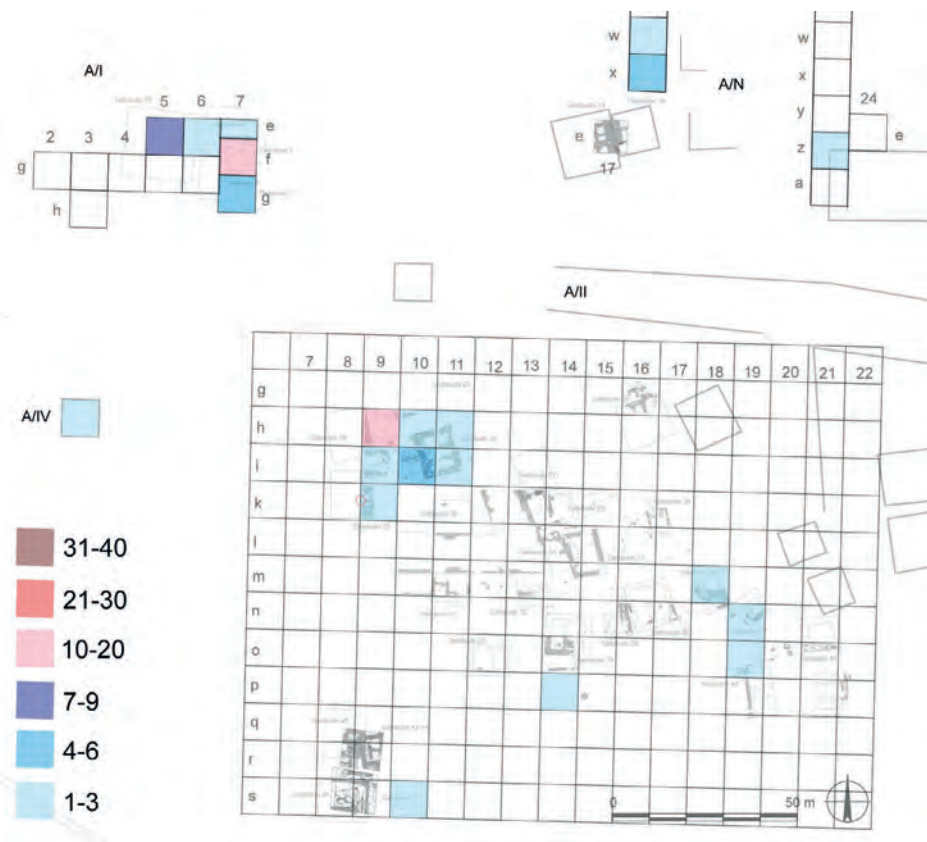
Tafel 344: Fundverteilung der kugeligen Vorratsgefäße B15



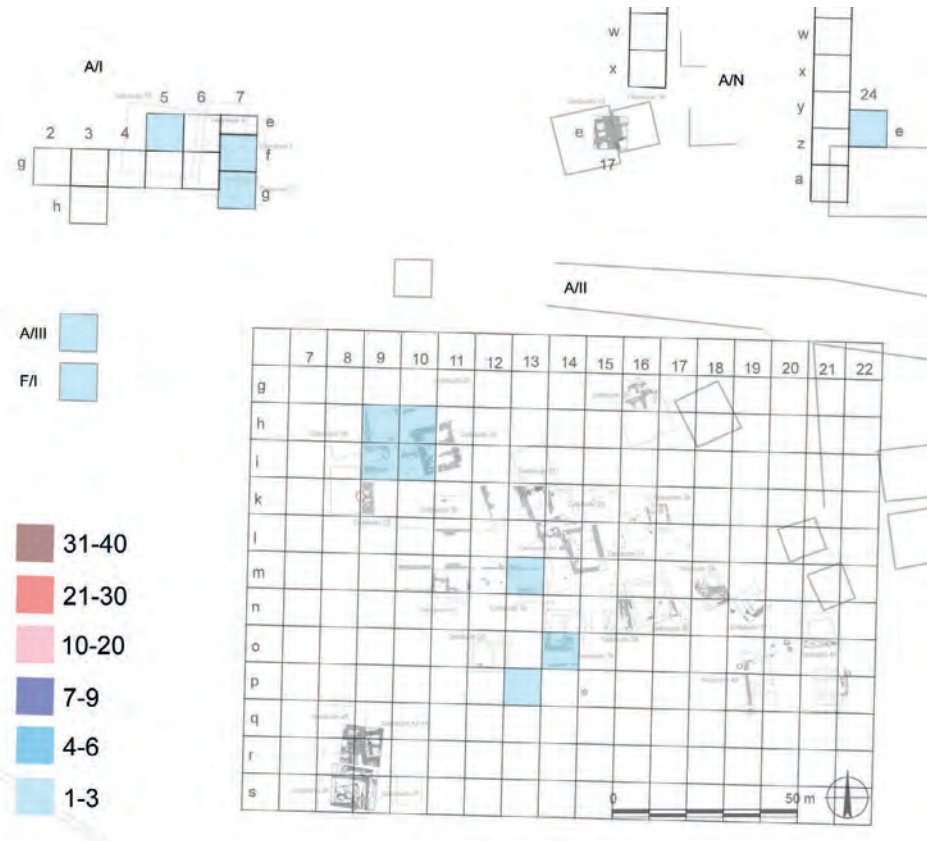
Tafel 345: Fundverteilung der Vorratsgefäße B39



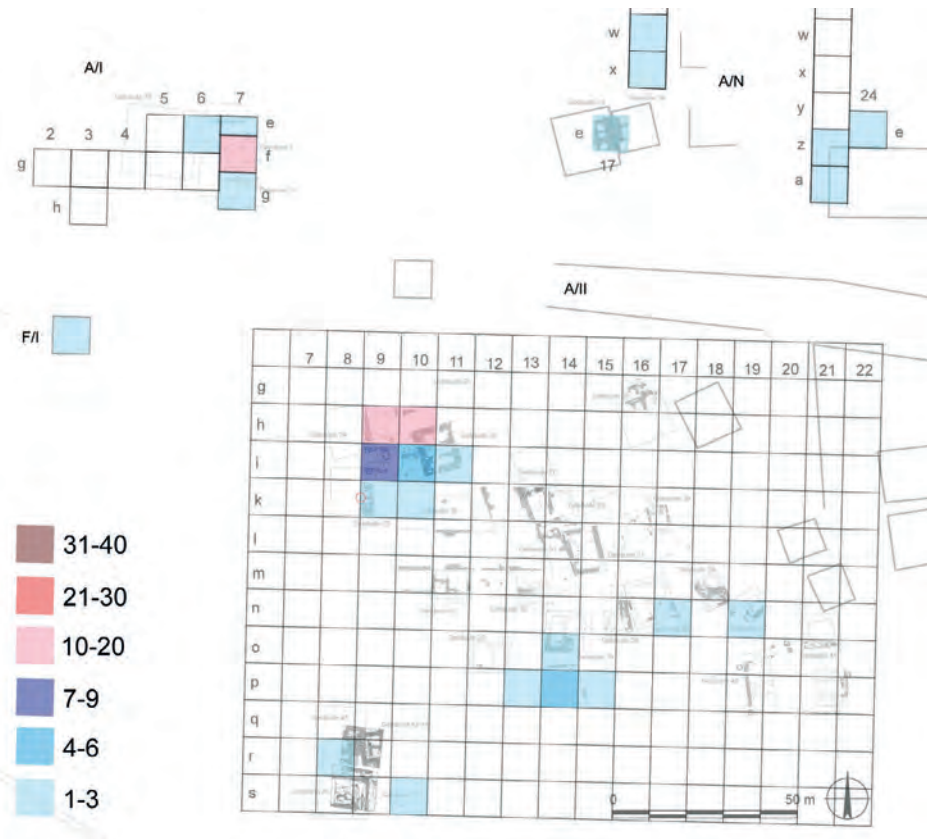
Tafel 346: Fundverteilung der Vorratsgefäße B41



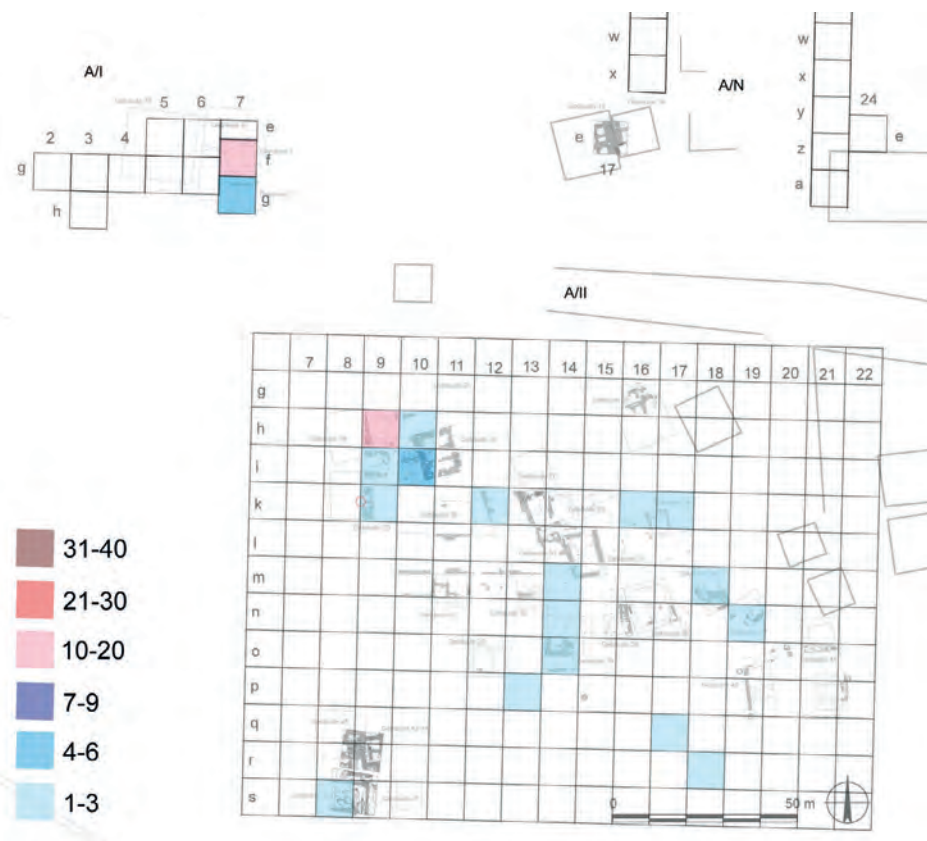
Tafel 347: Fundverteilung der Keramik aus ägyptischem Mergelton



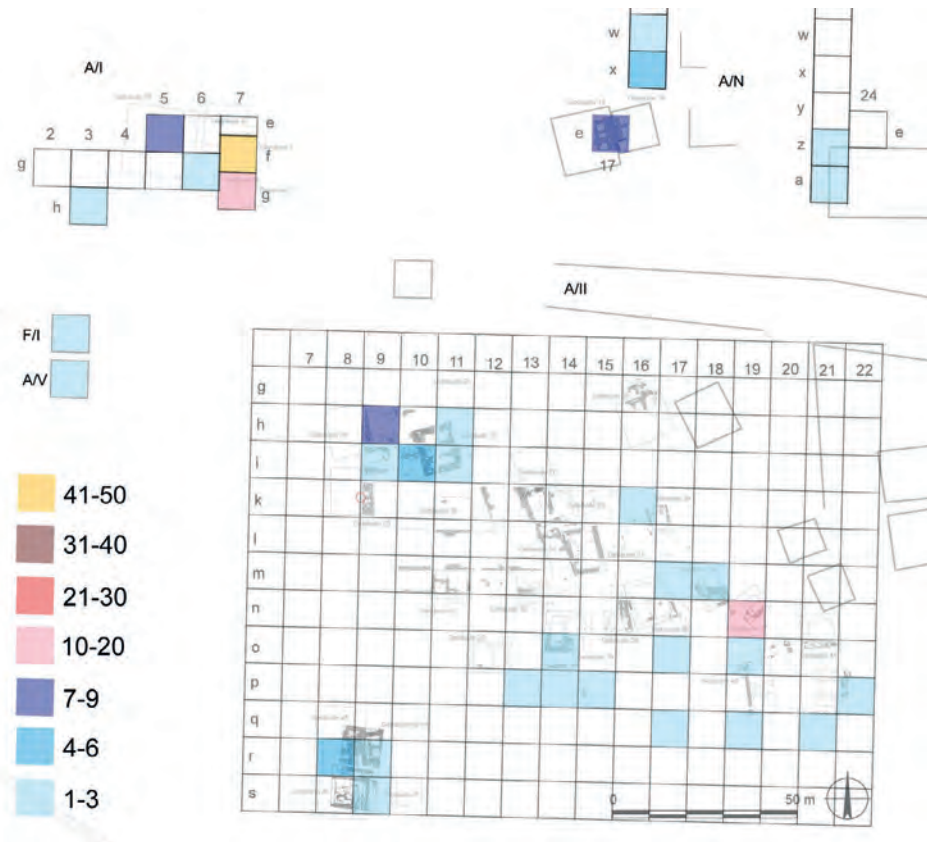
Tafel 348: Fundverteilung der Keramik aus ägyptischem Oaseton



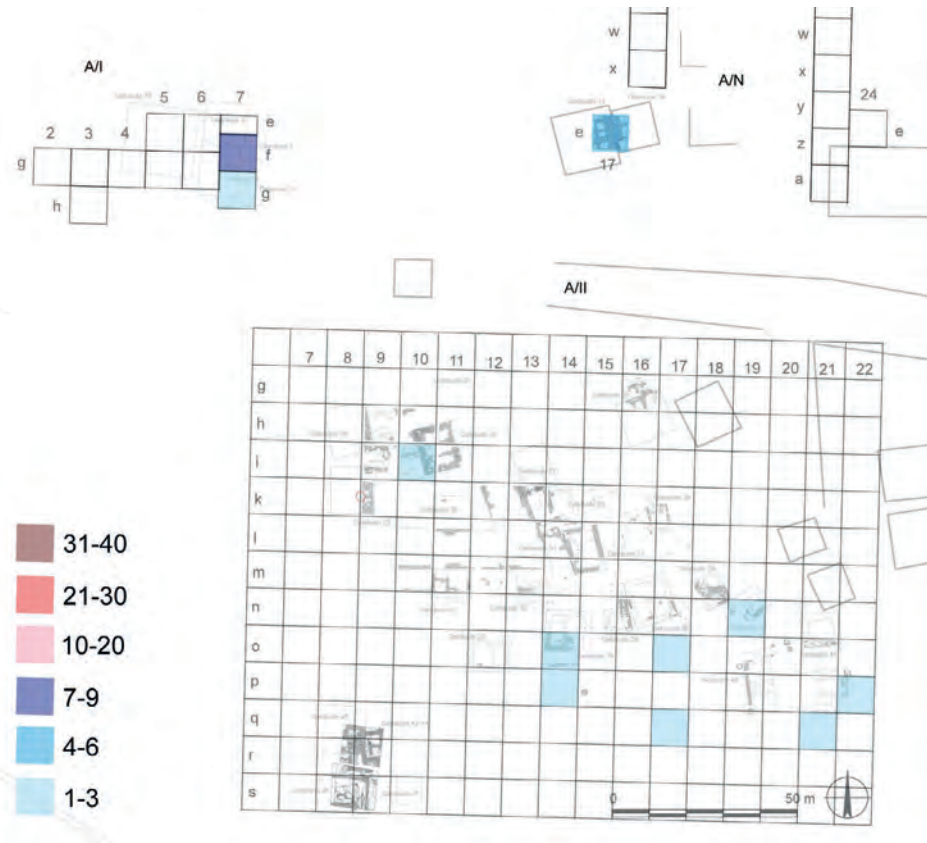
Tafel 349: Fundverteilung der phönizischen Keramik



Tafel 350: Fundverteilung der zypriischen Keramik



Tafel 351: Fundverteilung aller griechischer Keramikfragmente



Tafel 352: Fundverteilung der Keramik aus Klazomenai

Imitationen



K683.3



K3440.1



K10108.1



K10119.33



K1987.1



K3441.2

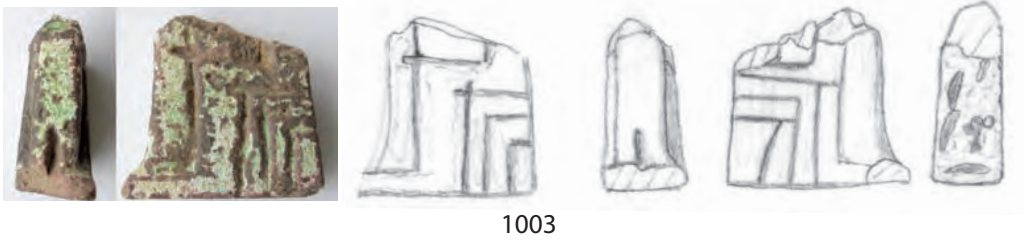
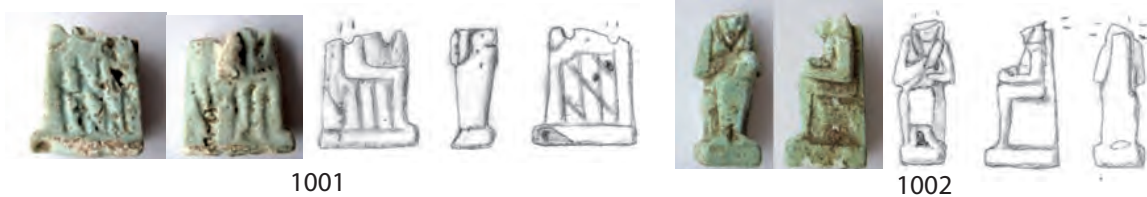


K8010.2



Tafel 353: Imitationen importierter Keramik in Nilton

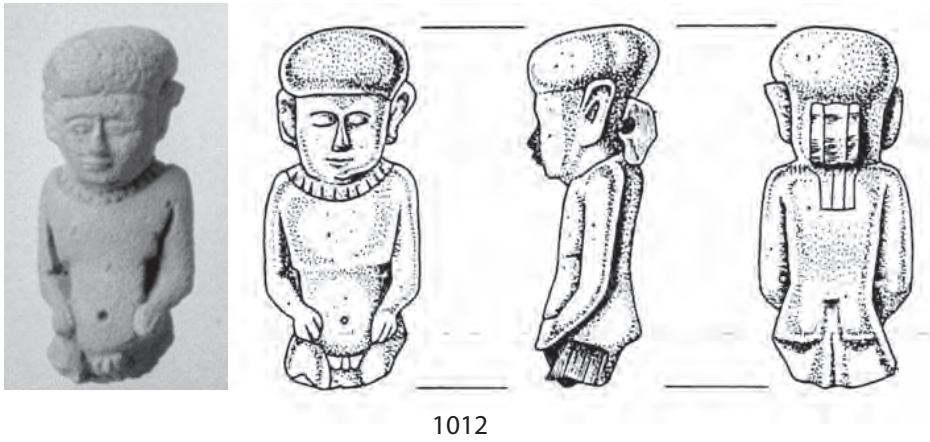
Amulette: Isis mit dem Horuskind



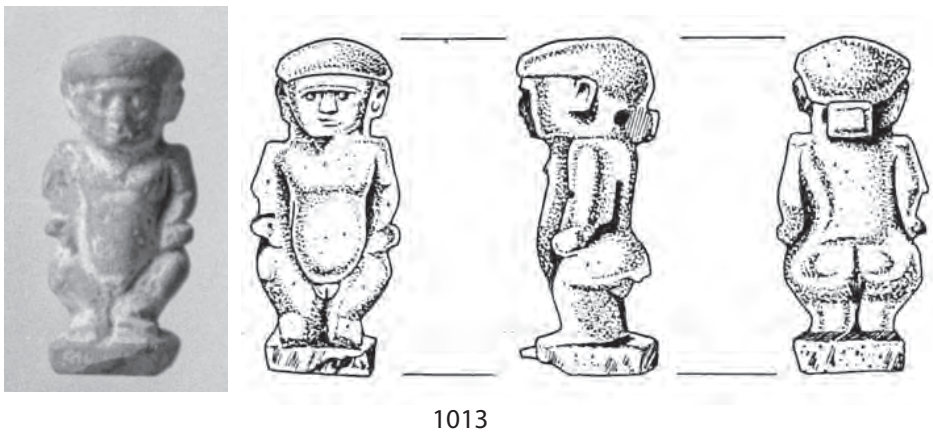
1001 (0035); 1002 (0828); 1003 (0829); 1004 (5537A); 1005 (9427G); 1006 (9534P); 1007 (9423K); 1008 (9534F); 1009 (9424N); 1010 (9426O); 1011 (9423L)

Tafel 354: Amulette, Isis mit dem Horuskind

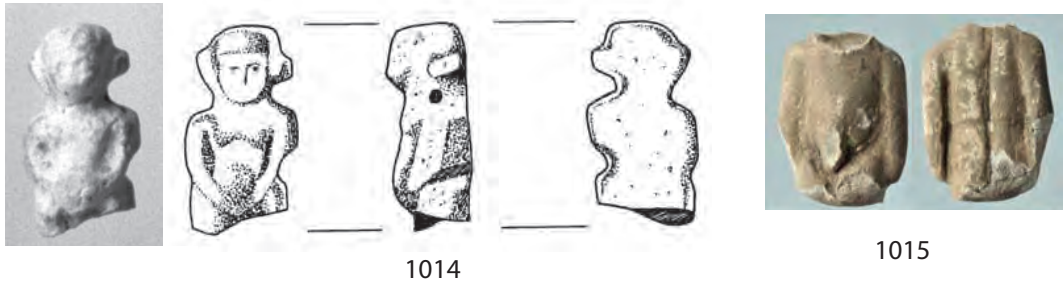
Amulette: Patäken



1012

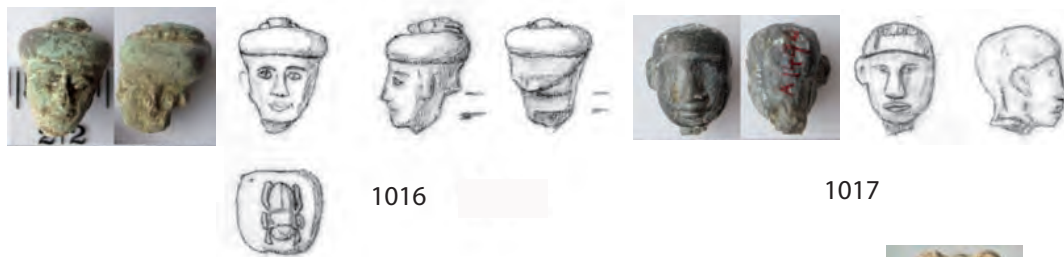


1013



1014

1015



1016

1017



1018



1019

1020



1021

1022

0 cm

10 cm



1012 (0012); 1013 (0018); 1014 (0045); 1015 (5557); 1016 (0826); 1017 (0967); 1018 (95311); 1019 (9534B); 1020 (9534N); 1021 (9430G3); 1022 (9530X)

Amulette: Bes



1023

1024

1025

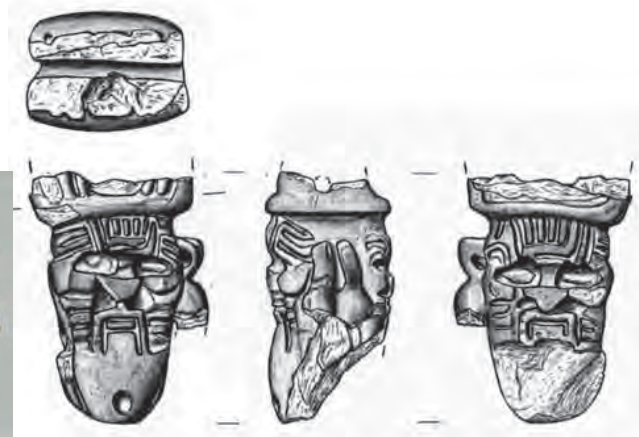


1026

1027



1028



1029



Amulette: andere Gottheiten



1030

1031



1032

0 cm

10 cm



1023 (0025); 1024 (2910C); 1025 (3219a); 1026 (0092); 1027 (9431Q); 1028 (9532O); 1029 (9420F); 1030 (0249); 1031 (9529E); 1032 (8108)

Amulette: andere Gottheiten



1033

1034

1035

1036



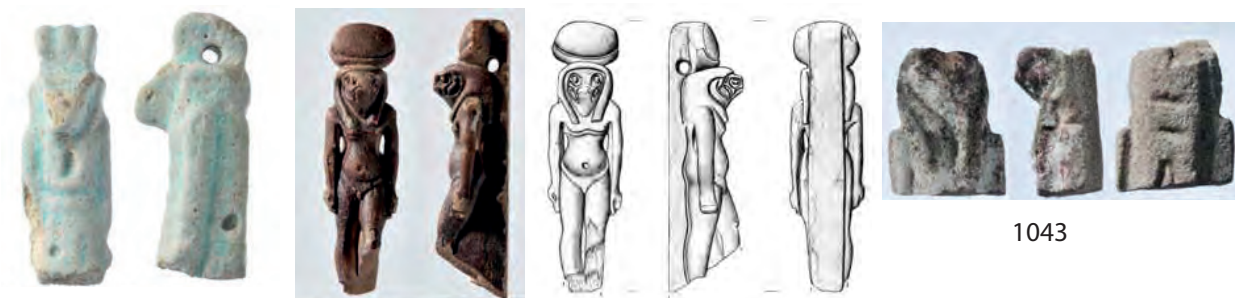
1037

1038



1039

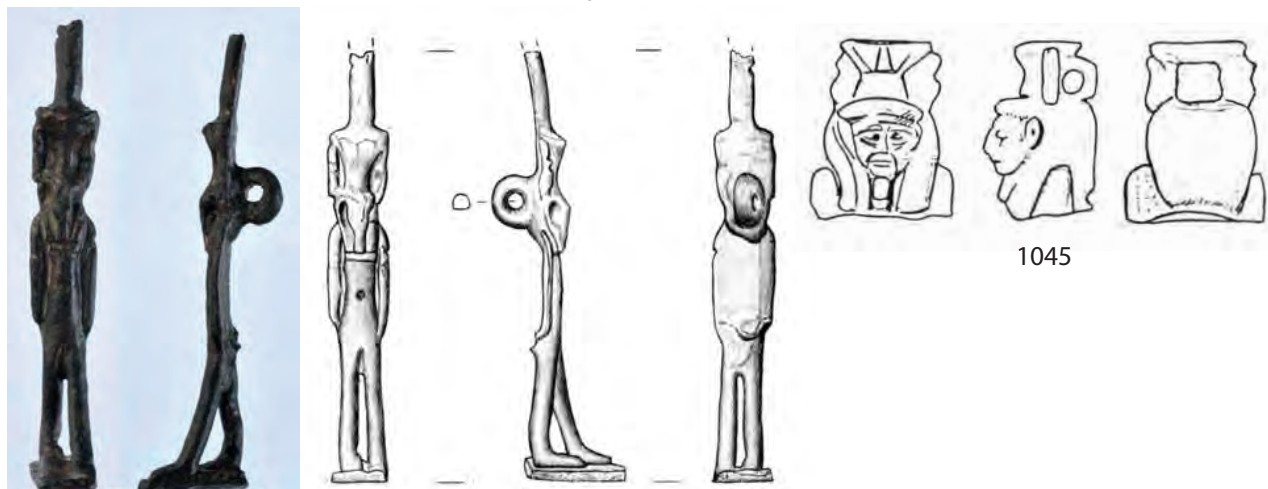
1040



1041

1042

1043



1044

1045

0 cm

10 cm

1033 (9422V); 1034 (9534H); 1035 (9535K); 1036 (9560B); 1037 (0251); 1038 (2892A); 1039 (0428); 1040 (9421C); 1041 (9529H); 1042 (9531); 1043 (9535T); 1044 (9529); 1045 (2101)

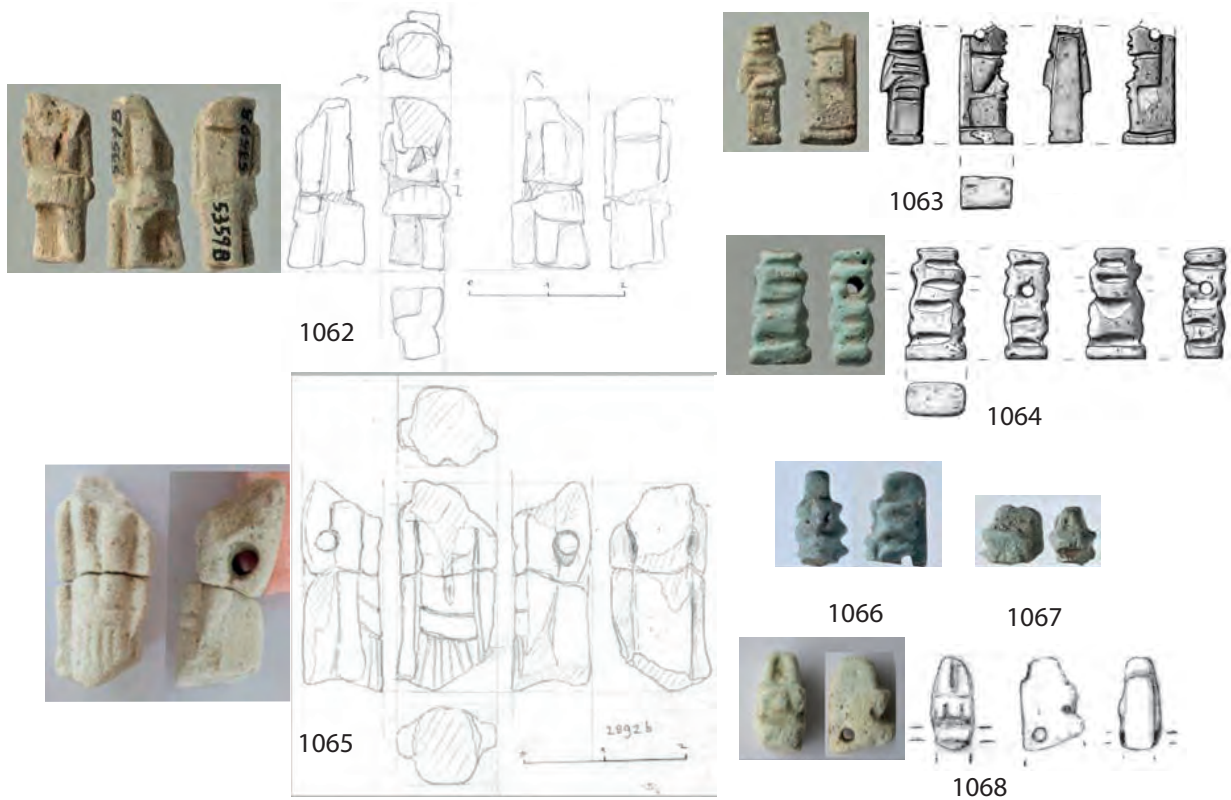
Amulette: andere Gottheiten



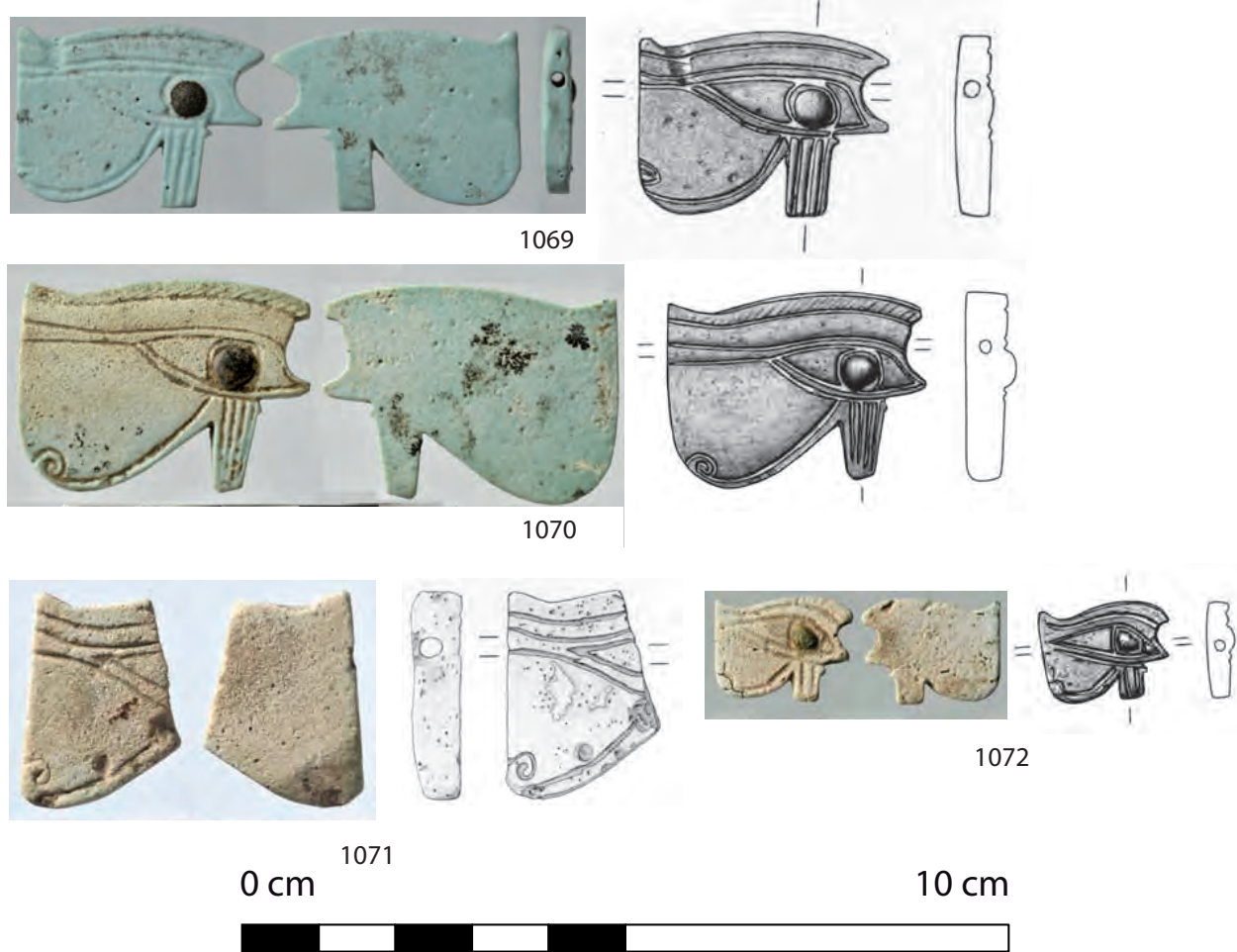
1046 (0317); 1047 (9530V); 1048 (9529A); 1049 (0252); 1050 (2892); 1051 (9532X); 1052 (9420L); 1053 (0439); 1054 (9530W); 1055 (9532C); 1056 (0492); 1057 (0034); 1058 (9548G); 1059 (0962); 1060 (0023); 1061 (1982a)

Tafel 358: Amulette, Horus, Nefertem und andere Gottheiten

Amulette: andere Gottheiten



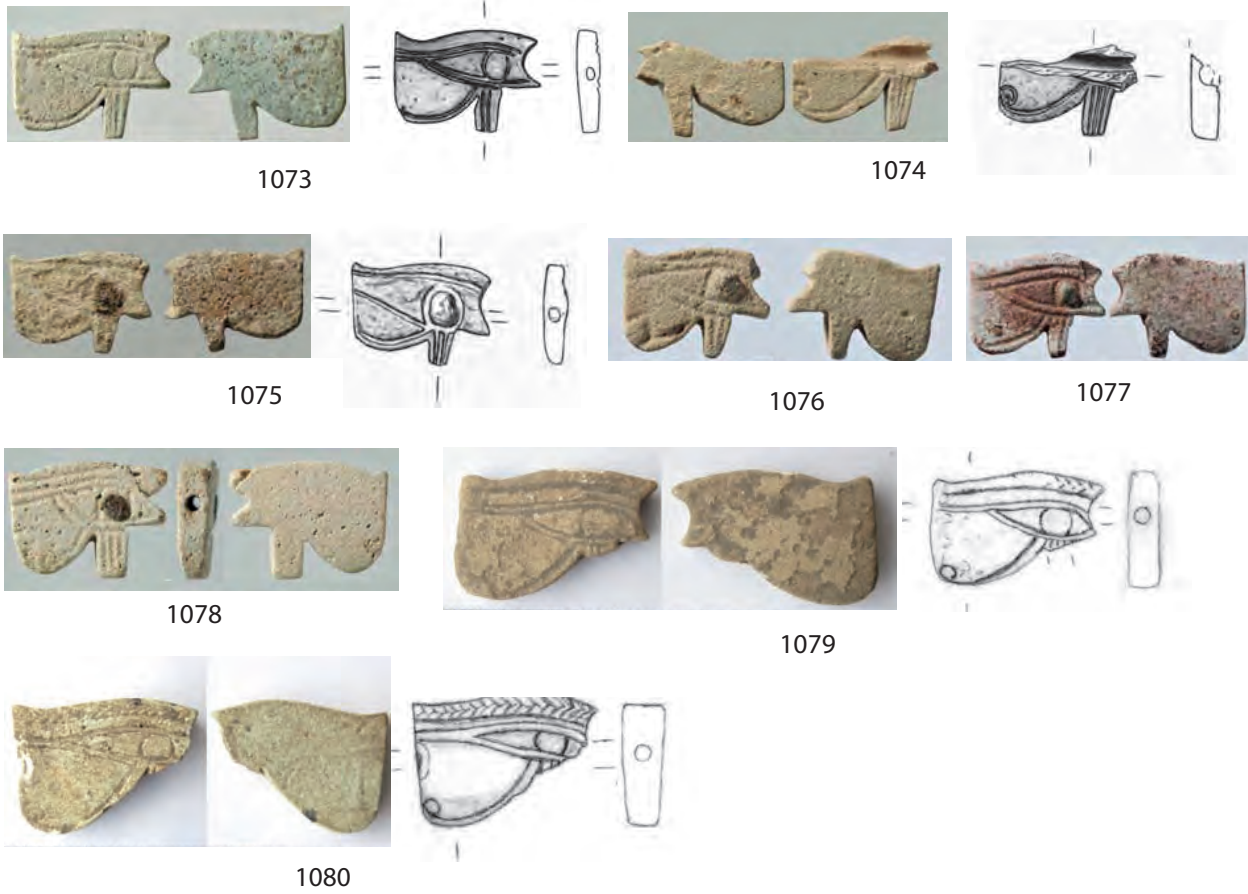
Amulette: Udjataugen, einfacher Stil



1062 (5359B); 1063 (9420G); 1064 (9421D1); 1065 (2892B); 1066 (9535G); 1067 (9535X); 1068 (0043); 1069 (9429); 1070 (9420B); 1071 (9527U); 1072 (9420A)

Tafel 359: Amulette, Fragmente von Gottheiten

Amulette: Udjataugen, einfacher Stil



Amulette: großformatige Udjataugen



1082



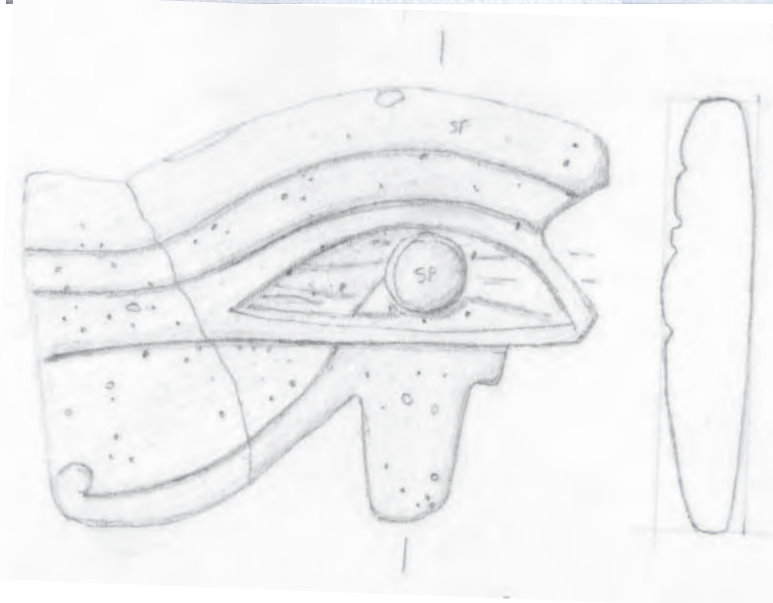
0 cm

10 cm

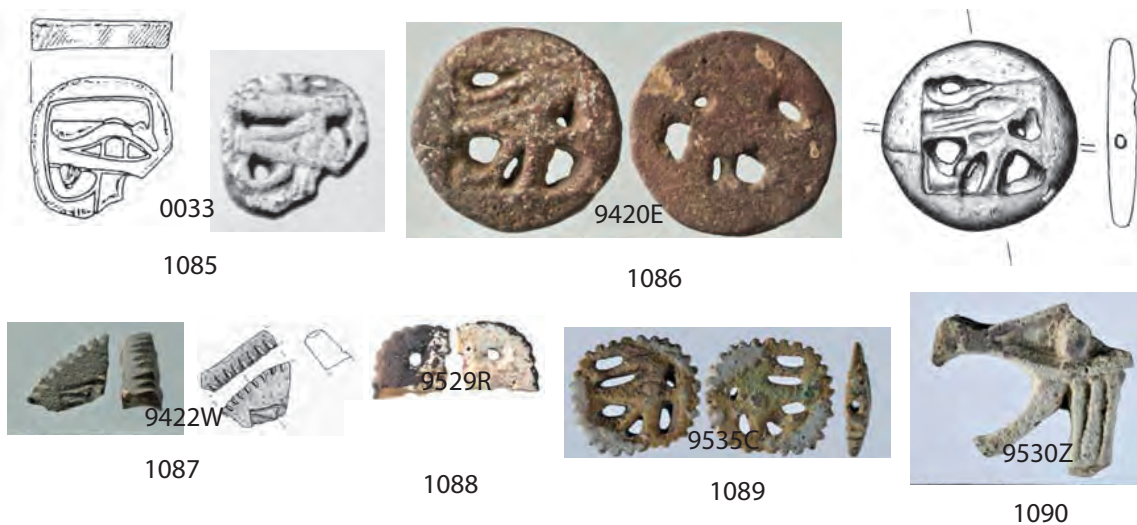


1073 (9420D); 1074 (9421G1); 1075 (9421T); 1076 (9528O); 1077 (9532E); 1078 (9431); 1079 (0265); 1080 (0725); 1081 (0255); 1082 (9532F)

Amulette: großformatige Udjataugen



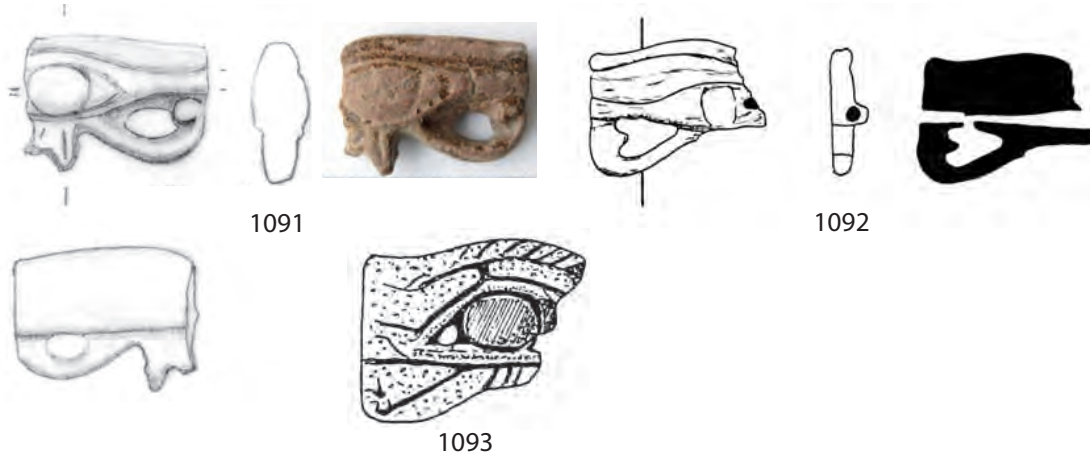
Amulette: durchbrochene Udjataugen



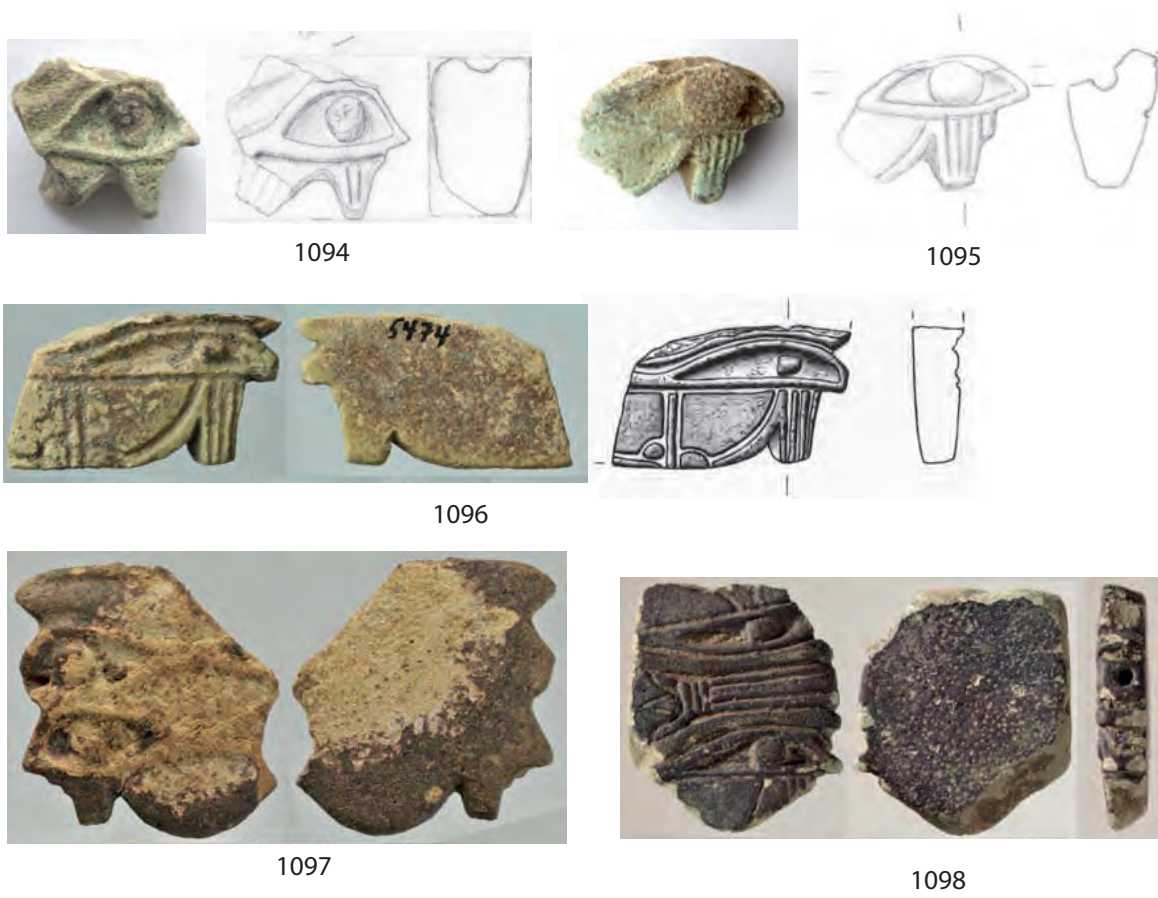
1083 (0427); 1084 (0914a+b); 1085 (0033); 1086 (9420E); 1087 (9422W), 1088 (9529R); 1089 (9535C); 1090 (9530Z)

Tafel 361: Amulette, große Udjataugen, Typ 2

Amulette: durchbrochene Udjataugen



Amulette: vierfache Udjataugen



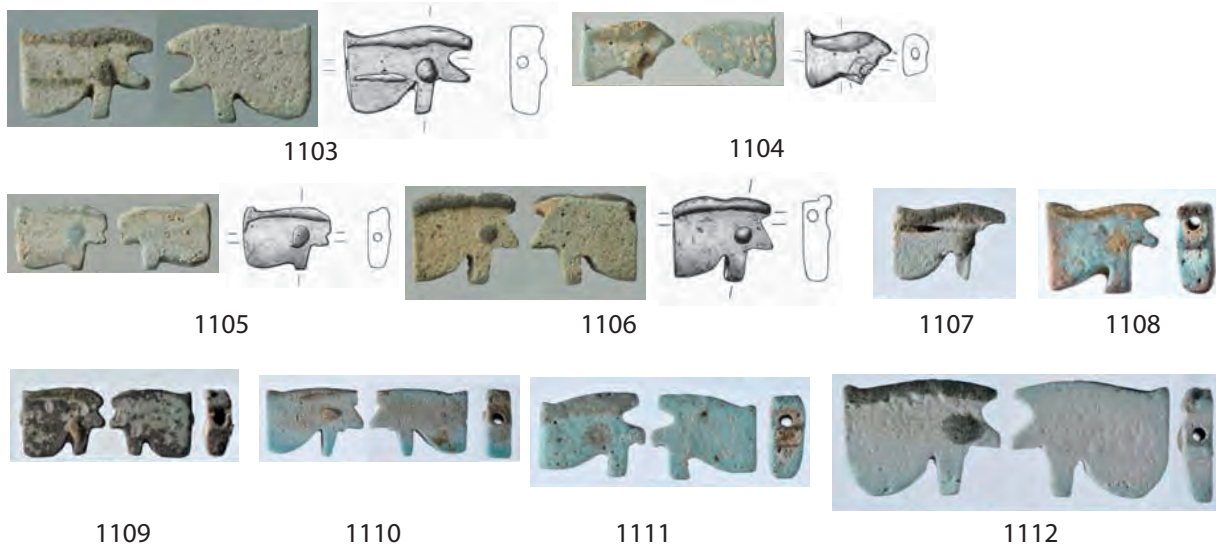
Amulette: stilisierte Udjataugen, Typ 1



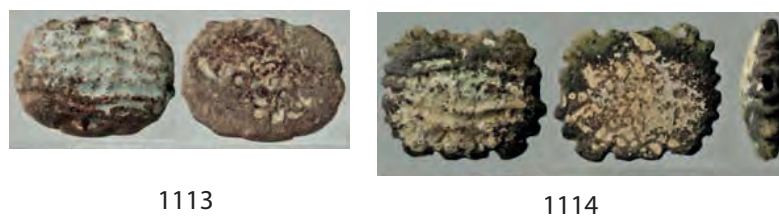
1091 (0472); 1092 (3216); 1093 (0937); 1094 (0470); 1095 (0846), 1096 (5474); 1097 (9420R); 1098 (9556L); 1099 (0022); 1100 (0938); 1101 (2961); 1102 (5516)

Tafel 362: Amulette, durchbrochene Udjataugen, Typ 3 und vierfach Udjataugen, Typ 4

Amulette: stilisierte Udjataugen, Typ 1



Amulette: stilisierte Udjataugen, Typ 2



Amulette: stilisierte Udjataugen, Typ 3 + 4 + 5



Amulette: sonstige Udjataugen

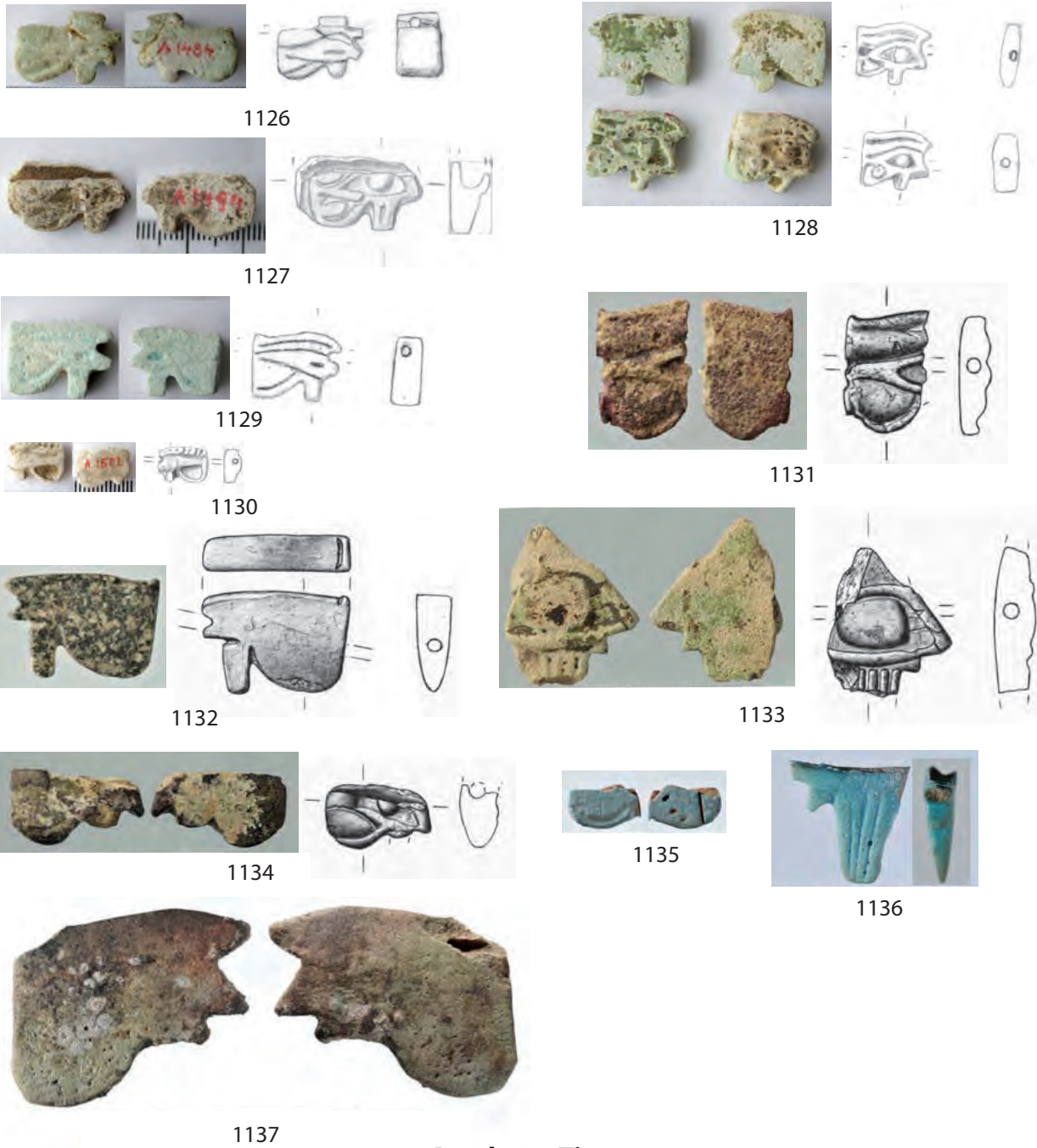


0 cm

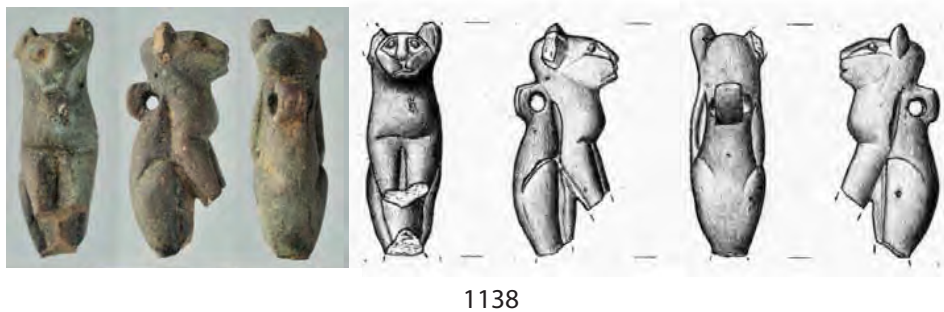
10 cm

1103 (5537); 1104 (94200); 1105 (9423E); 1106 (9426N); 1107 (9529B), 1108 (9530P); 1109 (9532I); 1110 (9534I); 1111 (9534M); 1112 (9536A); 1113 (9420P); 1114 (9427I); 1115 (9420S1); 1116 (9423C); 1117 (9551O); 1118 (9529S); 1119 (9531N); 1120 (9531F); 1121 (9547I); 1122 (4559); 1123 (4131D); 1124 (9420Y1); 1125 (9535P)

Amulette: sonstige Udjataugen



Amulette: Tiere



1126 (0044); 1127 (0559); 1128 (0250a+b); 1129 (0722); 1130 (1823), 1131 (9421V); 1132 (9421X); 1133 (9427B); 1134 (9427K); 1135 (9530D); 1136 (9531A); 1137 (9531P); 1138 (9430)

Tafel 364: Amulette, restliche Udjataugen

Amulette: Tiere



Amulette: Pflanzen



Amulette: Sonstige



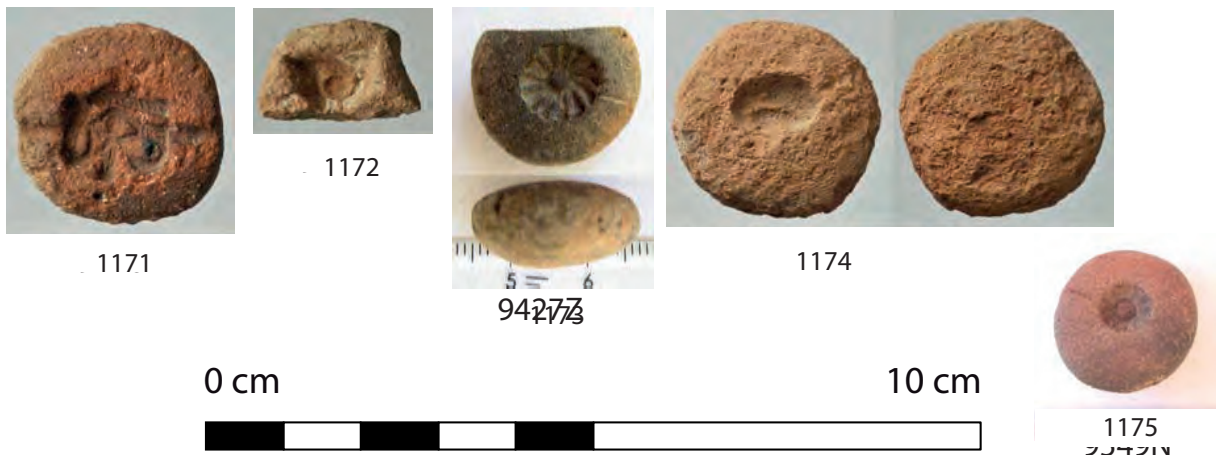
1139 (9421D2); 1140 (9530C); 1141 (9535D); 1142 (9545G); 1143 (0555), 1144 (1240); 1145 (9530U); 1146 (9529F); 1147 (0741); 1148 (9420H); 1149 (9420Q); 1150 (9528S); 1151 (9534O); 1152 (9535S); 1153 (1888); 1154 (4288); 1155 (9430U2); 1156 (9530B); 1157 (9552C); 1158 (0038); 1159 (0961); 1160 (5475)

Tafel 365: Amulette, Tiere

Amulette: Sonstige



Model



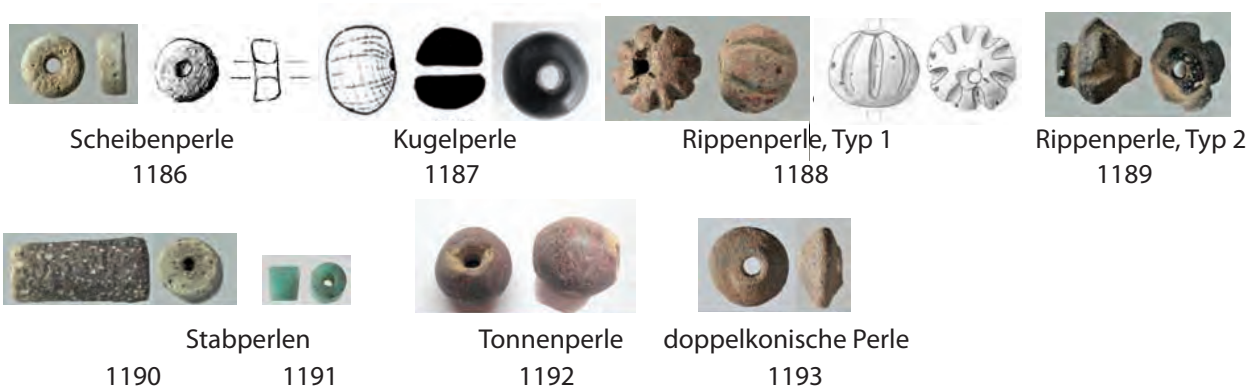
1161 (9430U1); 1162 (9431O); 1163 (9431R); 1164 (9532V); 1165 (9534R), 1166 (7664B); 1167 (9563Q); 1168 (0489); 1169 (9440O); 1170 (9429T); 1171 (9420V); 1172 (9421N1); 1173 (9427Z); 1174 (9436O); 1175 (9549N)

Tafel 366: Amulette, restliche Formen, Model

Model



Perlen

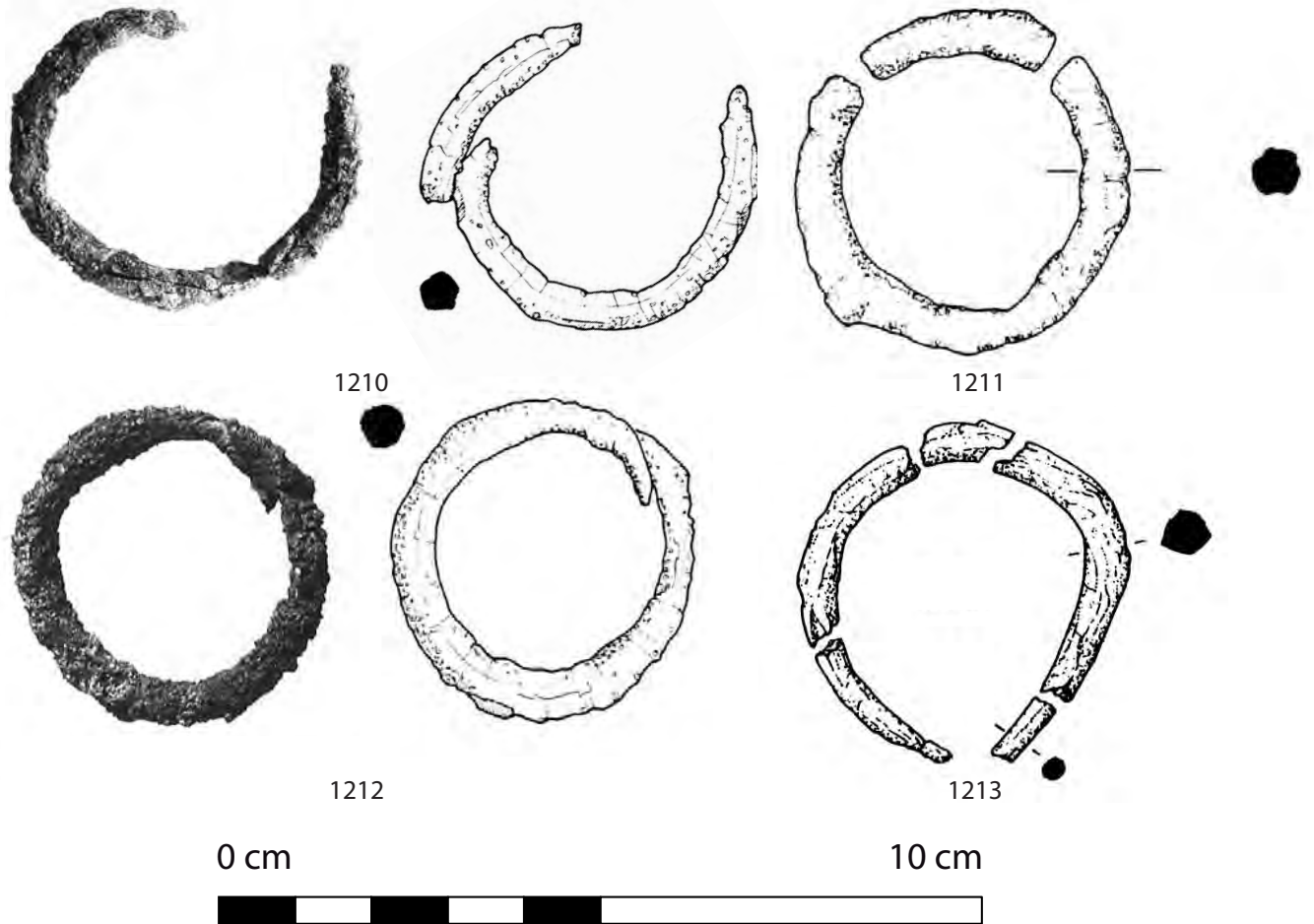


1176 (0562); 1177 (0988); 1178 (2695); 1179 (2876); 1180 (0729); 1181 (7554); 1182 (9420U); 1183 (9420T); 1184 (9534S); 1185 (9427Y); 1186 (9422H); 1187 (3219C); 1188 (9423Z2); 1189 (9431P6); 1190 (9431P7); 1191 (9536U); 1192 (9559R); 1193 (9551T)

Sonstige Perlen



Armreifen, Ringe, Ohrringe



1194 (0002); 1195 (9434A1); 1196 (9424H1); 1197 (9528D); 1198 (9535H), 1199 (9535I); 1200 (9541Y); 1201 (9420W2); 1202 (9420S2); 1203 (9425M); 1204 (9424H2); 1205 (9436V4); 1206 (9540B); 1207 (9431T2); 1208 (5541b); 1209 (9548K); 1210 (3220); 1211 (3406); 1212 (3221); 1213 (5604)



1214a+b



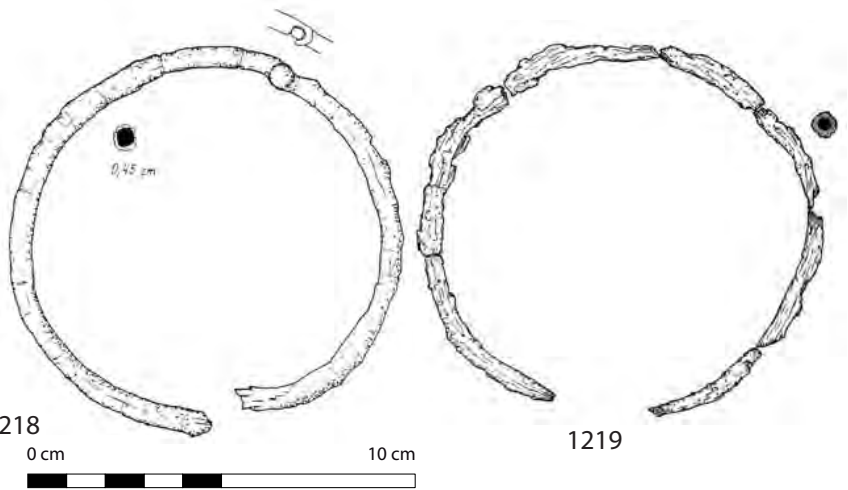
1215

1216

1217



1218



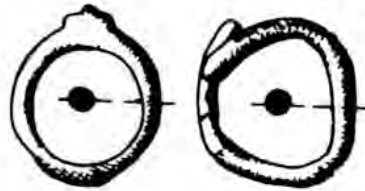
1219



1220



1221a+b



1222



1223



1224



1225

0 cm

10 cm



1214a+b (3278a+b); 1215 (9425G2); 1216 (9551I); 1217 (9625X); 1218 (3222), 1219 (4819); 1220 (0009); 1221a+b (0926a+b); 1222 (9427M); 1223 (2085); 1224 (9421D4); 1225 (9432S)

Ohrhinge und sonstiger Schmuck



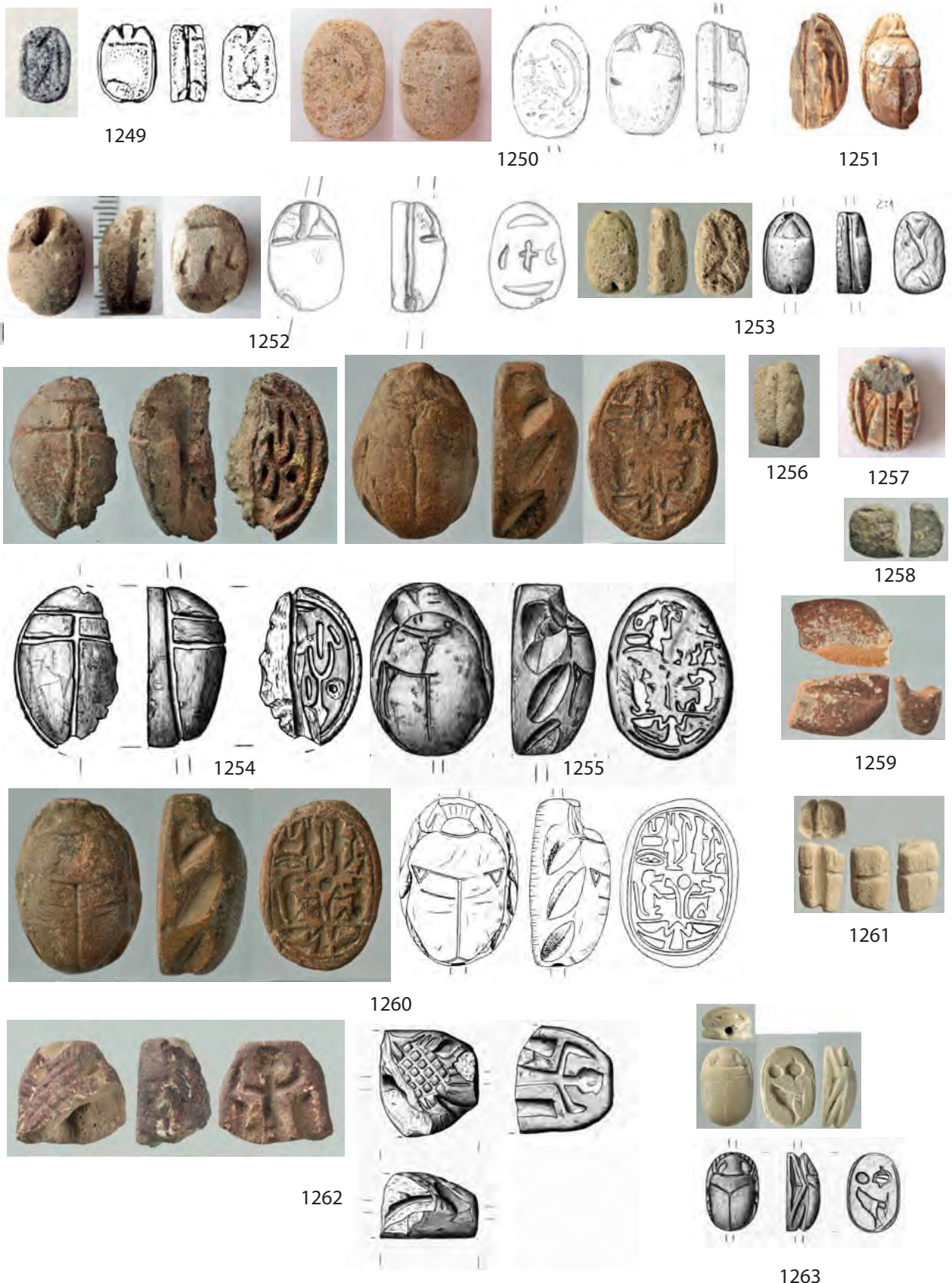
Skarabäen



1226 (9420M1); 1227 (9423Y2); 1228 (9429R); 1229 (9431Y); 1230 (9432U3), 1231 (9528F); 1232 (9531V); 1233 (9543G); 1234 (9549Q); 1235 (9420N); 1236 (9532R); 1237 (9432D); 1238 (9540D); 1239 (9558W); 1240 (5581); 1241 (9423A); 1242 (9423W); 1243 (9529Q); 1244 (3219F); 1245 (9430K2); 1246 (9534E); 1247 (0013); 1248 (0125)

Tafel 370: Ohrhinge, Skarabäen und anderer Schmuck

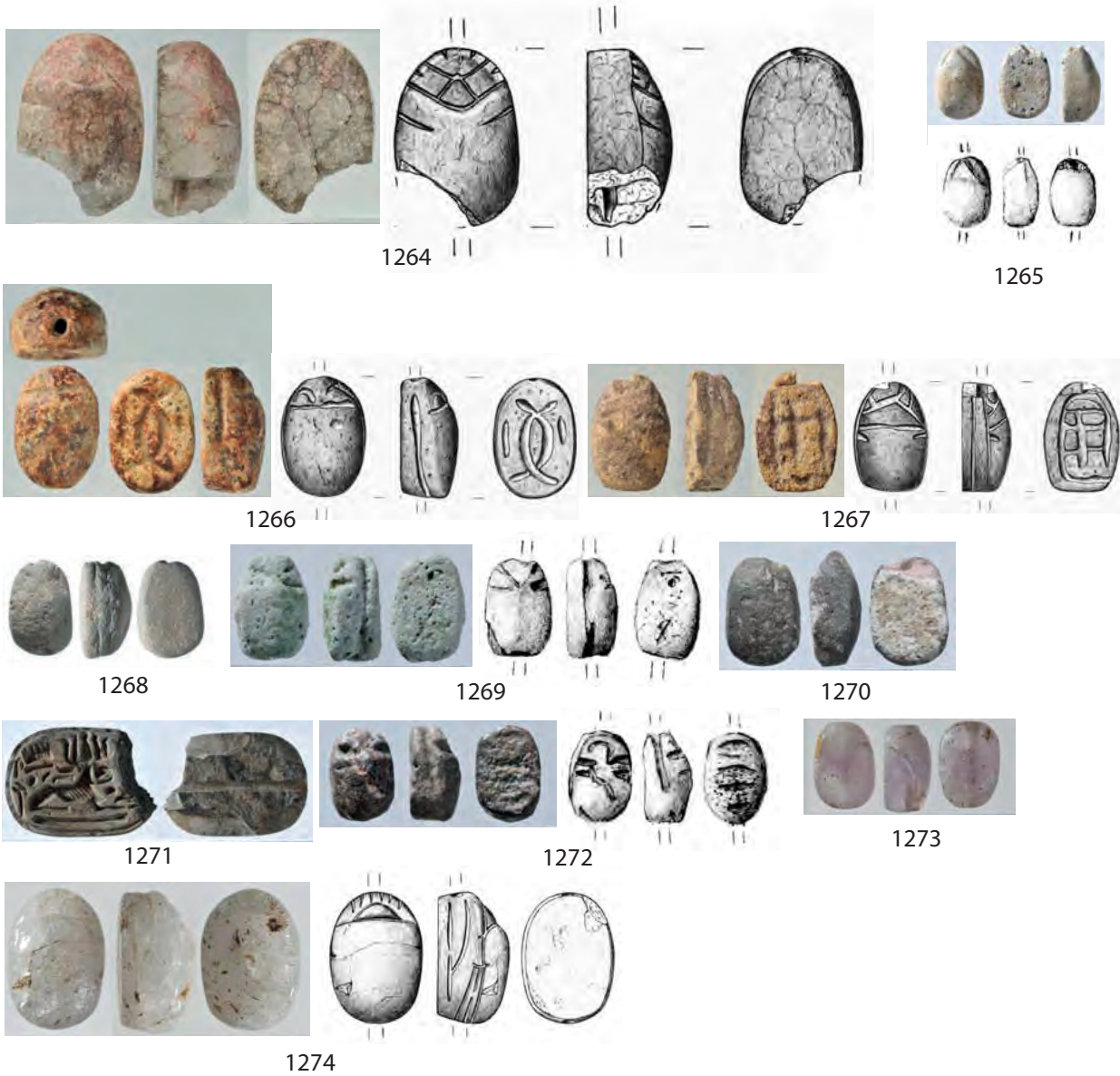
Skarabäen



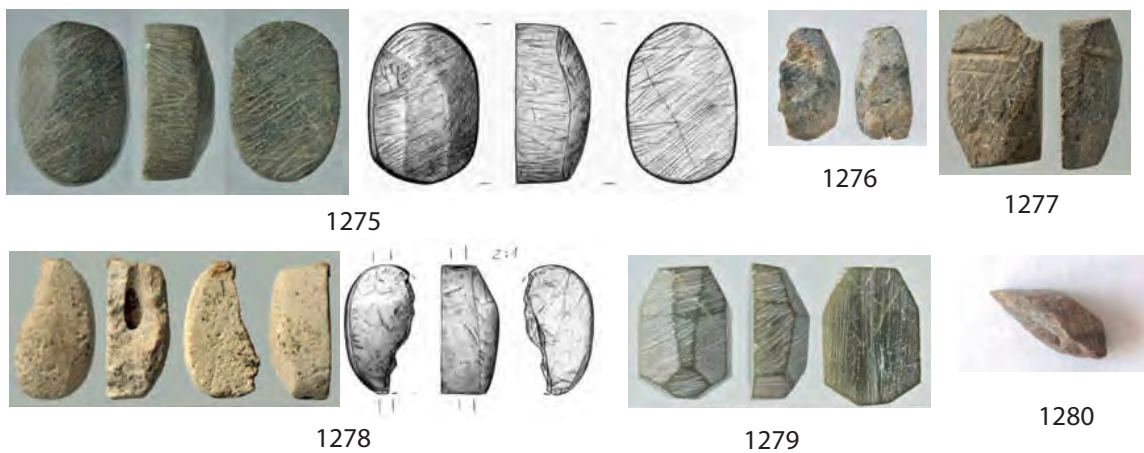
1249 (0254); 1250 (0438); 1251 (9420C); 1252 (0956); 1253 (9420K), 1254 (5517); 1255 (7204); 1256 (9421U); 1257 (9421Z); 1258 (9427F); 1259 (9429A1); 1260 (7434); 1261 (9433Z); 1262 (9421D3); 1263 (9433)

Tafel 371: Skarabäen

Skarabäen



Skarabäenrohlinge



0 cm

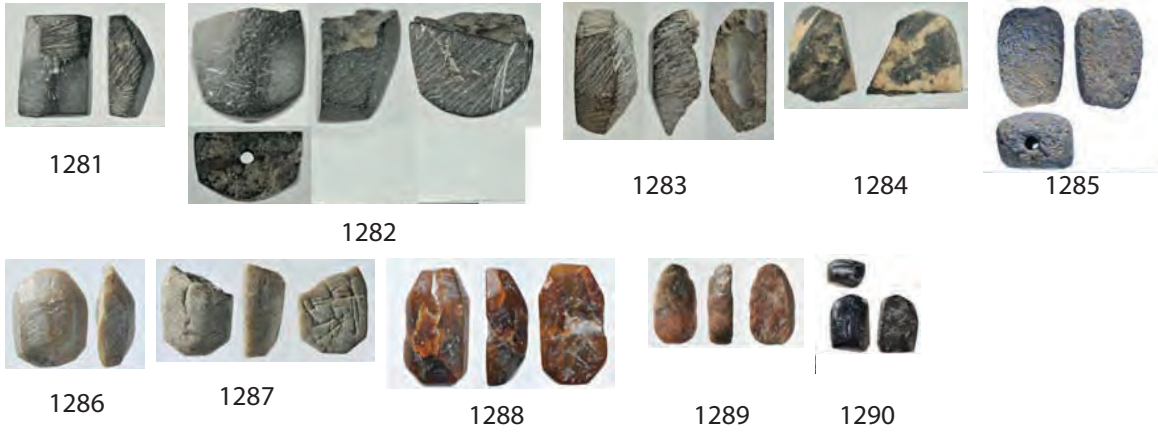
10 cm



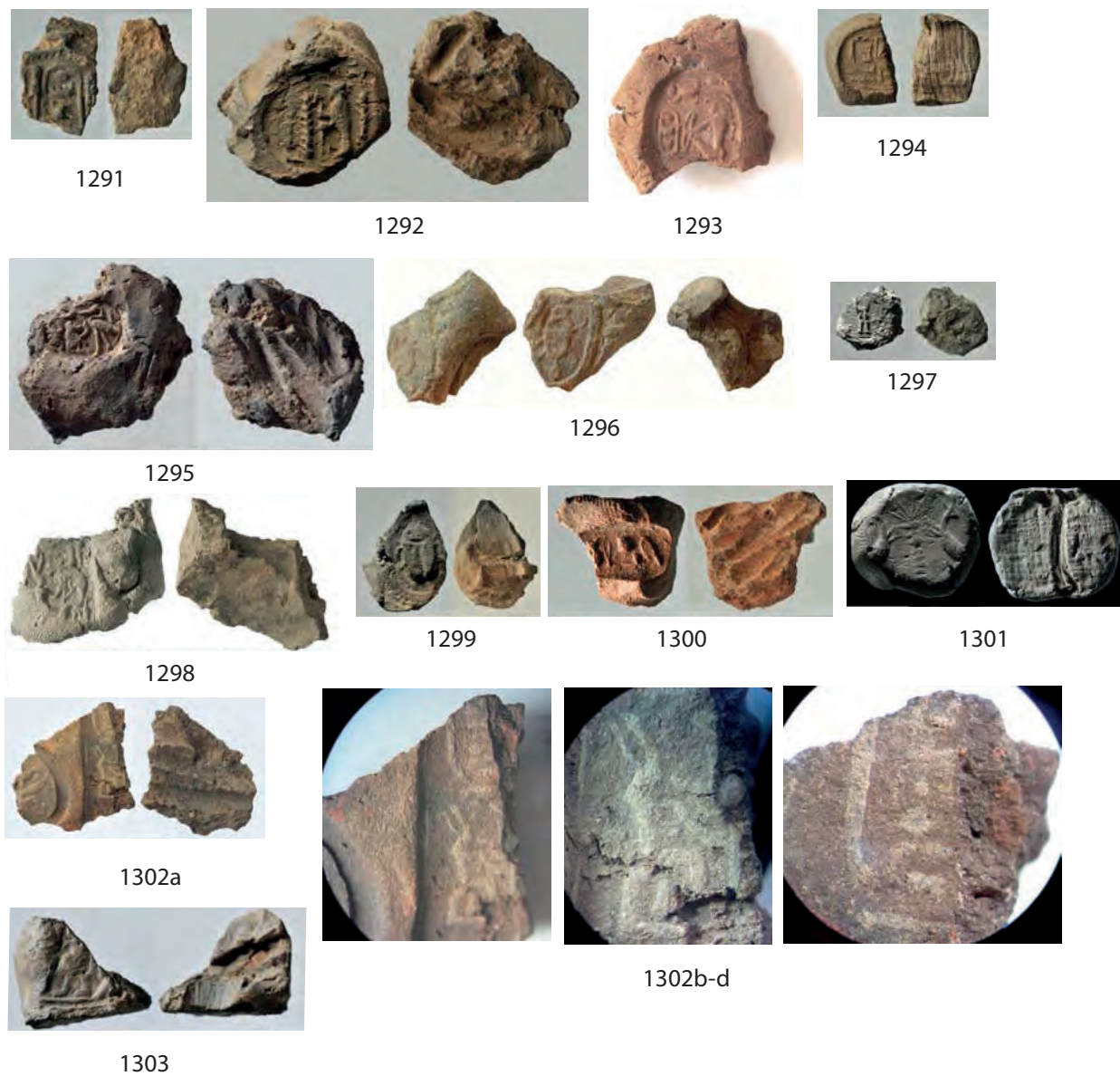
1264 (9432); 1265 (9528); 1266 (9434); 1267 (9439); 1268 (9529D), 1269 (9535); 1270 (9535F); 1271 (9535R); 1272 (9536); 1273 (9537); 1274 (9540); 1275 (5518); 1276 (9421N2); 1277 (9421N3); 1278 (9420I); 1279 (9424F); 1280 (9426L)

Skarabäenrohlinge

1047



Siegelabdrücke



0 cm

10 cm



1281 (9427E); 1282 (9428K); 1283 (9433X); 1284 (9433Y); 1285 (9529C), 1286 (9529T); 1287 (9529Z); 1288 (9531E); 1289 (9538B); 1290 (9556H); 1291 (5551); 1292 (9422O); 1293 (9422X); 1294 (9426T); 1295 (9425V); 1296 (9427S); 1297 (9431B); 1298 (9432K); 1299 (9434O); 1300 (9435Q); 1301 (9437); 1302a-d (9438E); 1303 (9438R)

Siegelabdrücke



1304 (9527X); 1305 (9534L); 1306 (9528P); 1307 (9535W); 1308 (9551P), 1309 (9538); 1310 (9538A); 1311 (9540U); 1312 (9560Q); 1313 (9560R); 1314 (9565T); 1315 (9571F); 1316 (9529K); 1317 (9530K); 1318 (9531T); 1319 (9534C); 1320 (9535Z); 1321 (9556V)

Reiterfiguren aus Ton



1322



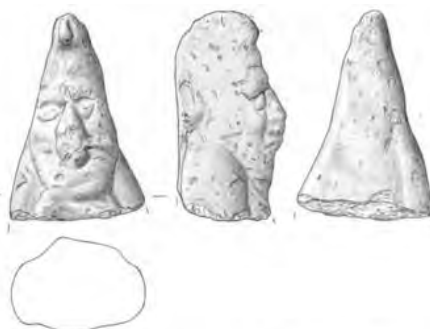
1323



1324



1325



1326



1327



1328



1329



1330

1331

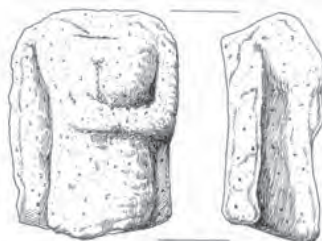


1332

Frauenfiguren aus Ton



1333



1334

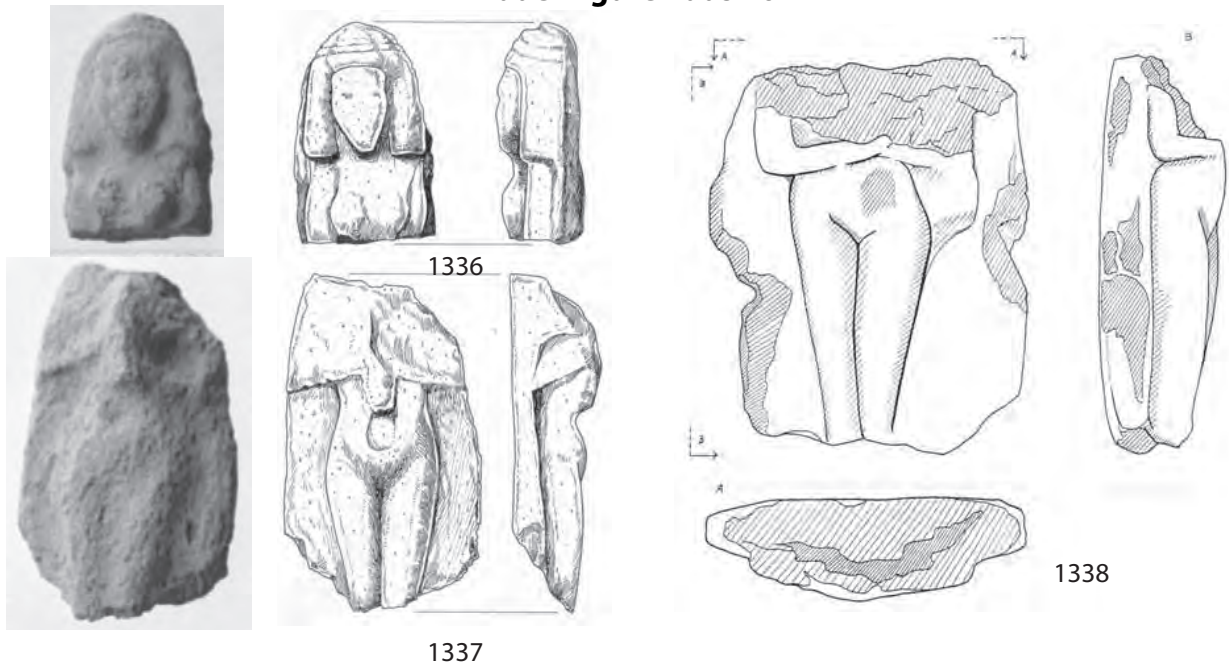


1335



1322 (0971); 1323 (5481); 1324 (95290); 1325 (5548); 1326 (9528R), 1327 (9536E); 1328 (9536R); 1329 (9596K); 1330 (9625M); 1331 (9625N); 1332 (9625Z); 1333 (0093); 1334 (0504); 1335 (1822)

Frauenfiguren aus Ton

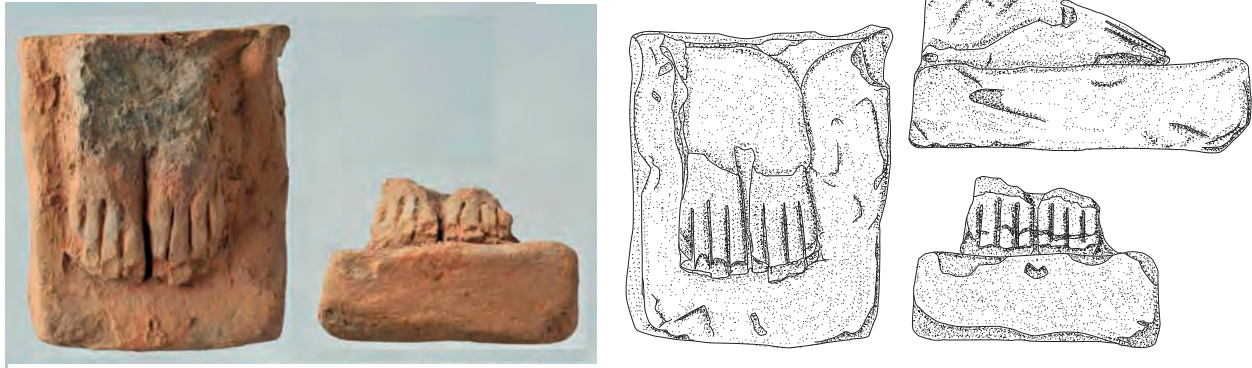


Sonstige menschliche Tonfiguren



1336 (0004); 1337 (0030); 1338 (2761); 1339 (5546); 1340 (9536M), 1341 (9555Z); 1342 (5547); 1343 (9545O); 1344 (0056); 1345 (0506)

Sonstige menschliche Tonfiguren



1346



1347

1348



1350



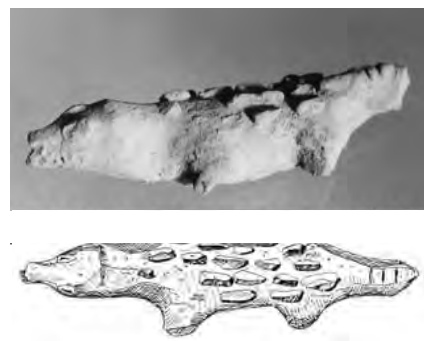
1349

1351



1352

Tierfiguren aus Ton



1353

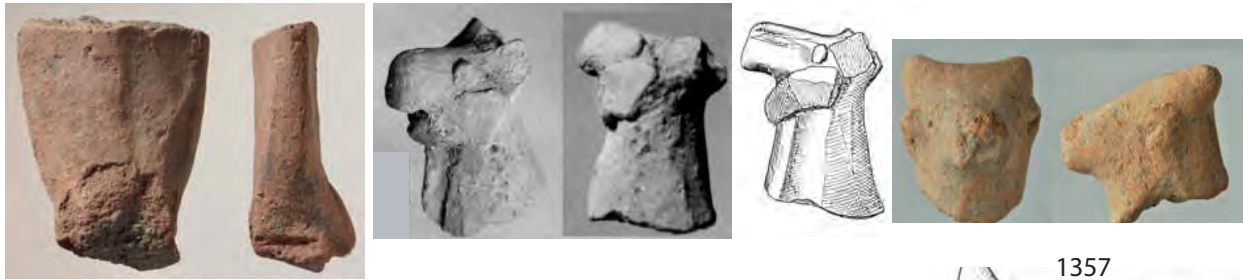


1354



1346 (4108I); 1347 (5830); 1348 (9425O); 1349 (9536D); 1350 (7424), 1351 (9537K); 1352 (9564G); 1353 (0563); 1354 (4932);

Tierfiguren aus Ton



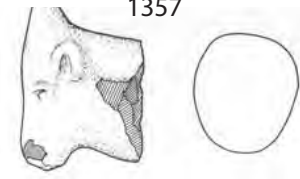
1355

1356

1357



1359



1360



1361



1362



1363



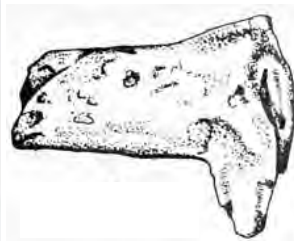
1364



1365



1366



1367

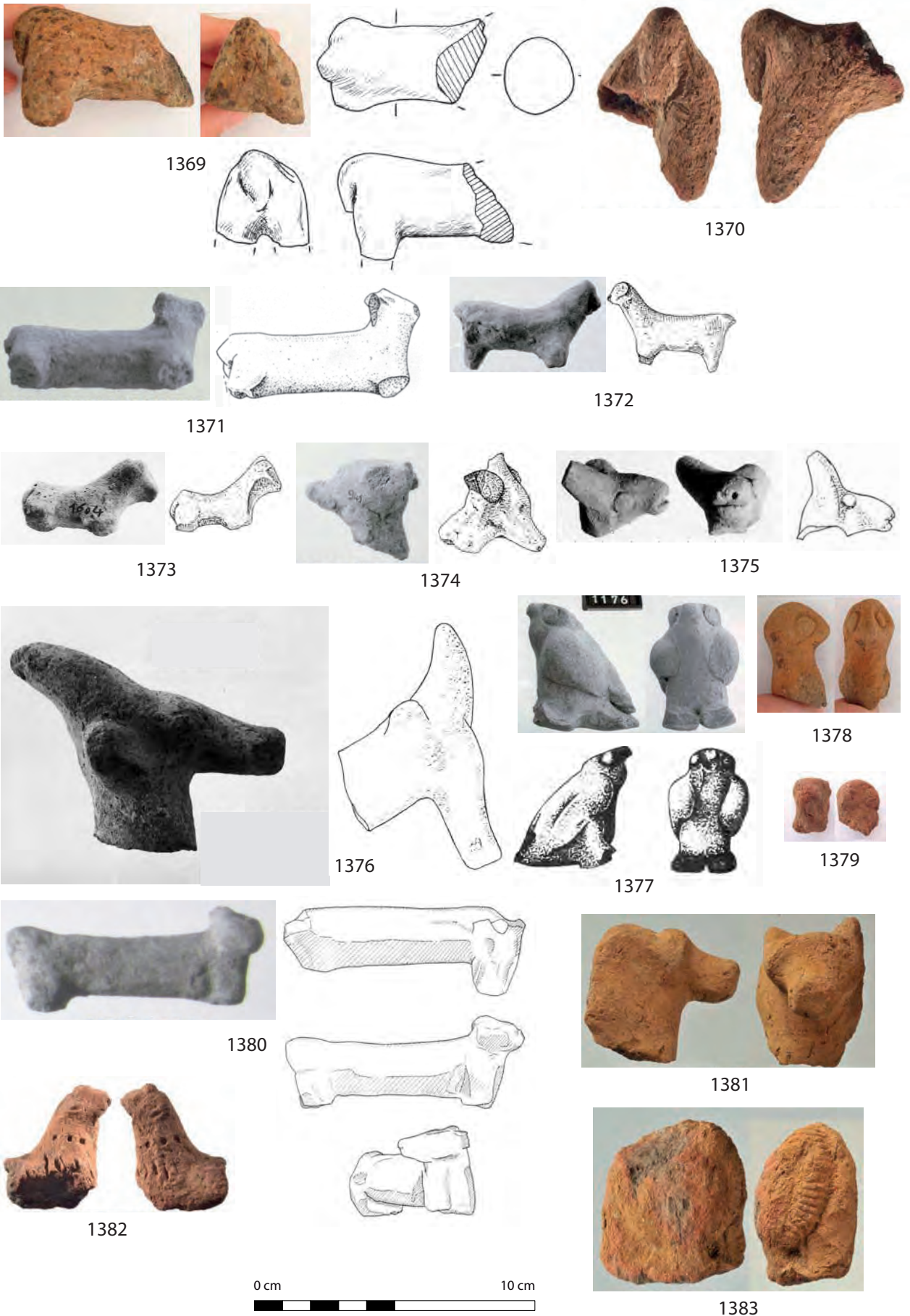


1368



1355 (9563E); 1356 (0488); 1357 (9426Y); 1358 (2494); 1359 (6460), 1360 (9427W); 1361 (9428B); 1362 (9437G); 1363 (9547Z); 1364 (9564F); 1365 (9563R); 1366 (0257); 1367 (0734a); 1368 (1230)

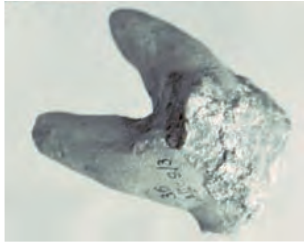
Tafel 378: Tierfiguren



1369 (7664); 1370 (9573E); 1371 (0821); 1372 (0945); 1373 (1604); 1374 (0941); 1375 (2361); 1376 (2067); 1377 (1176); 1378 (9437E); 1379 (9543C); 1380 (2764); 1381 (9428E); 1382 (9567W); 1383 (9434G)

Tafel 379: Tierfiguren (2)

Tierfiguren aus Ton



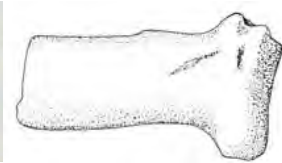
1384



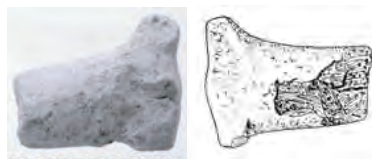
1385



1386



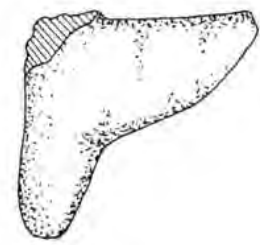
1387



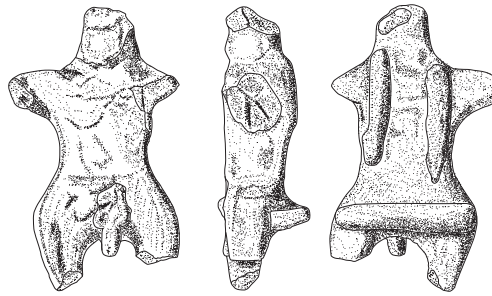
1388



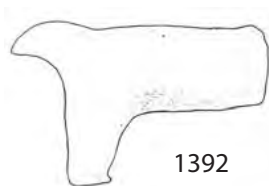
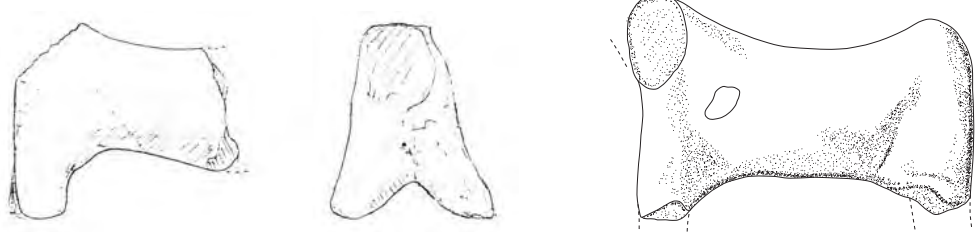
1389



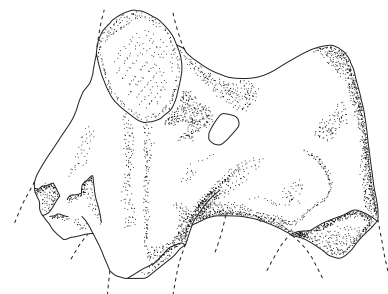
1390



1391



1392



1393



1384 (0036); 1385 (0441); 1386 (0728); 1387 (0737); 1388 (0969), 1389 (1112); 1390 (1866); 1391 (1985); 1392 (2067A); 1393 (4132A)



1394



1395



1396



1397



1398



1399



1400



1401



1402



1403



1404



1405



1406



1407



1408



1394 (5548A); 1395 (9427X); 1396 (9429D); 1397 (9429P1); 1398 (9432Y), 1399 (9433O); 1400 (9434F); 1401 (9437H); 1402 (9437I); 1403 (9437K); 1404 (9437L); 1405 (9437M); 1406 (9437Y); 1407 (9567P); 1408 (9565Y)

Tierfiguren aus Ton

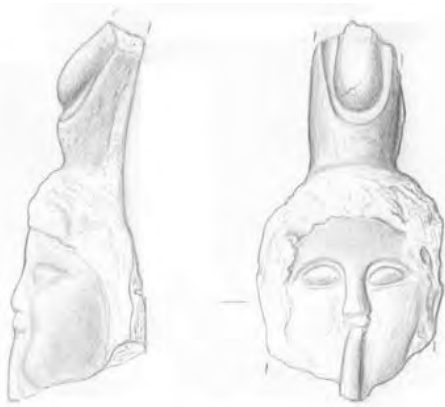


1409



1410

Terrakotten



1411



1412



1413



1414



1415



1416



1417



1418



1419



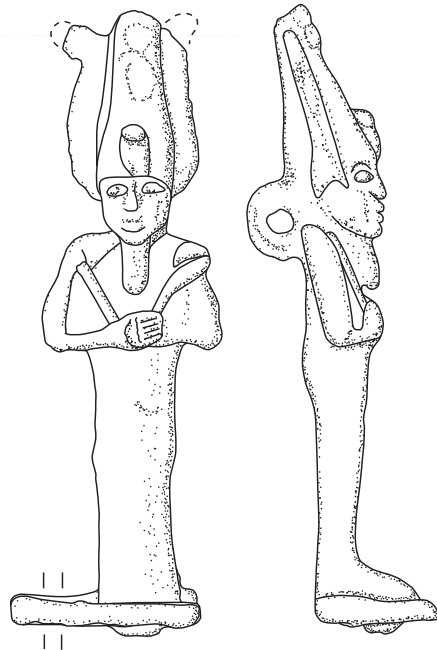
1420



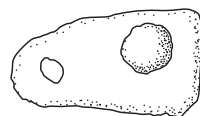
1409 (9543D); 1410 (9570P); 1411 (0425); 1412 (9555P); 1413 (9555Q), 1414 (7965); 1415 (9559L); 1416 (9565X); 1417 (9566R); 1418 (9562V); 1419 (9625A); 1420 (9563Z)



1421



1422



0 cm

10 cm



Einlagen und Verzierungen



1423 (9426F); 1424 (9431W1); 1425 (9431W2); 1426 (9547X); 1427 (9435C1), 1428 (9571I); 1429 (9422I); 1430 (9435C2); 1431 (9439G); 1432 (9423B); 1433 (9423R); 1434 (9420W4); 1435 (9421E); 1436 (9440L); 1437 (9426S); 1438 (9443S1)

Tafel 384: Einlagen und Verzierungen



1439



1440



1441



1442



1443

0 cm

10 cm

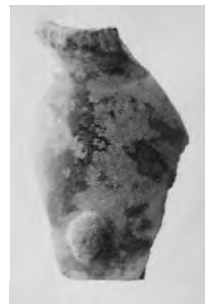
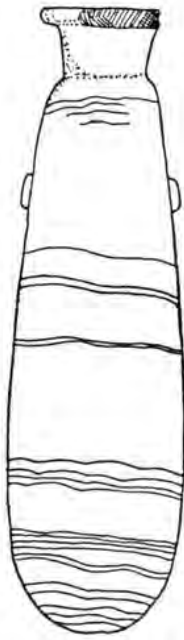


1439 (9431Z1); 1440 (9566P); 1441 (9440K); 1442 (9440N); 1443 (9440Q)

Steingefäße



1444



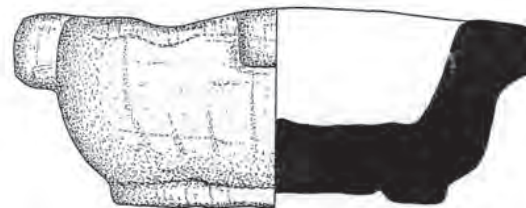
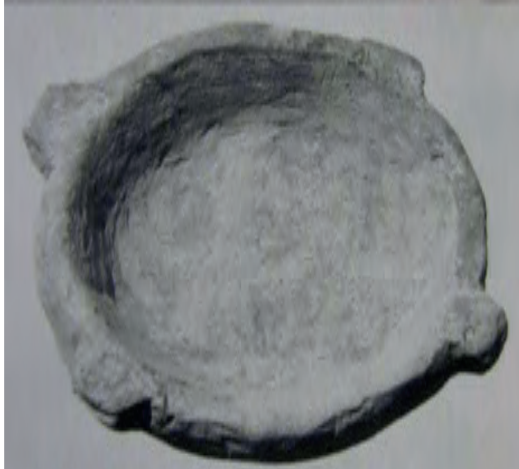
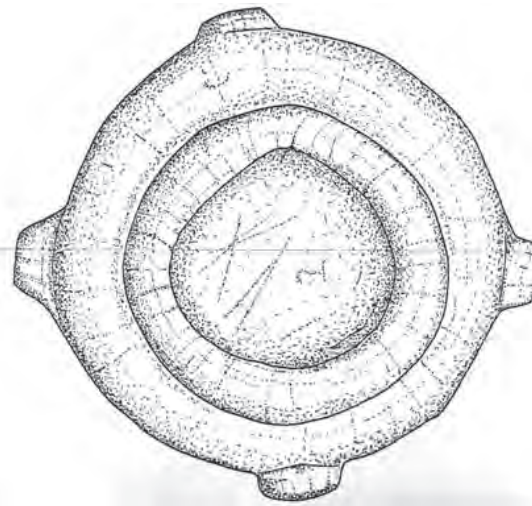
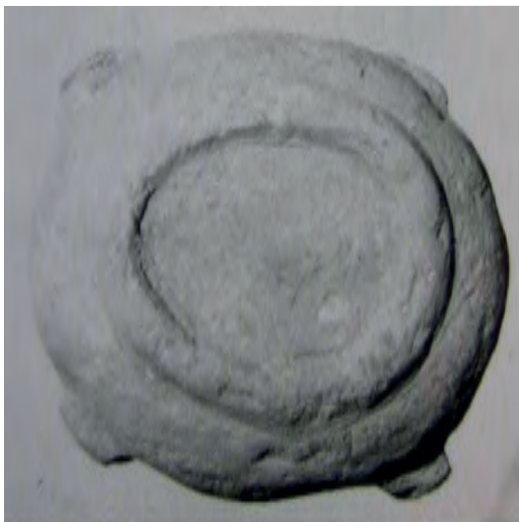
1445



1446



1447



1448



1449



1450



1444 (0901); 1445 (1158); 1446 (9625W); 1447 (0912); 1448 (3259); 1449 (9569A); 1450 (9422M)